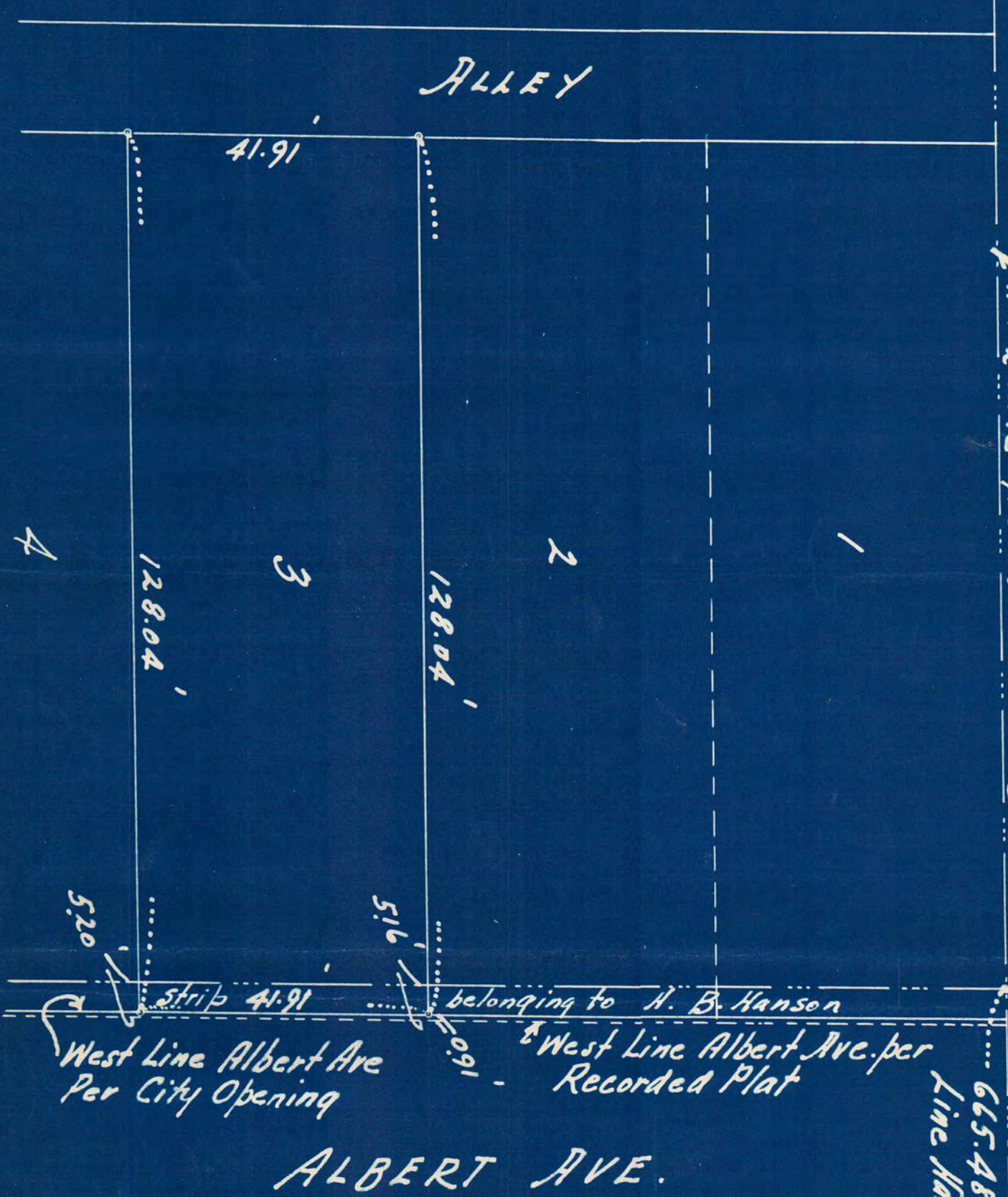


The Hanson conveyance commenced 665.48 feet West of the West Line of Hamline Ave.
 Note: The west line of Albert Ave. according to the plat of record is 660.32 feet west of the west line of Hamline Ave.



SURVEY OF LOT 3 Block 3 H. B. HANSON'S ADDN.
 ST. PAUL, MINN.
 Scale 20 ft. per inch
 Surveyed by me the 22nd day of July 1937
 J. J. Cunniff, Civil Engineer.

4015

LOT 5