

SURVEY OF

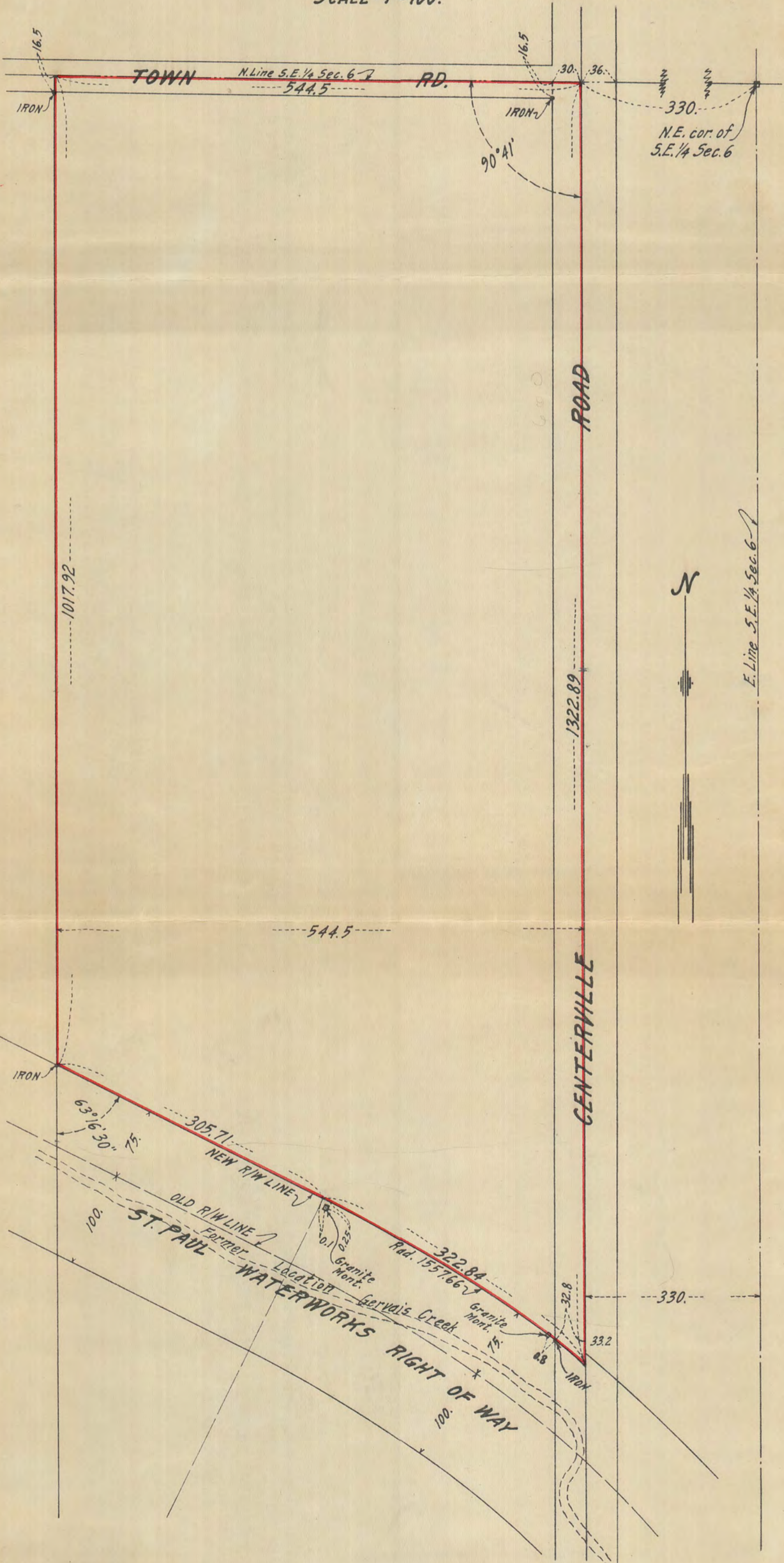
4000

That part of S.E. 1/4 of Sec. 6, T. 29 N., R. 22 W. described as follows:-
 Beginning at a point on N. line of said S.E. 1/4 of Sec. 6, 330' W. of N.E. cor.
 thereof; thence W. on said N. line, 544.5'; thence S. parallel with E. line of
 said S.E. 1/4, 1017.92' to N.E'y. Right of Way line of St. Paul Waterworks;
 thence S.E. at an angle of 63° 16' 1/2" to the left, 305.71' on said Right of Way
 line; thence on a curve with a radius of 1557.66', on said Right of Way line,
 322.84' to a point 330' W. of E. line of said S.E. 1/4 of Sec. 6; thence N. parallel
 with said E. line of S.E. 1/4 of Sec. 6, 1322.89' to point of beginning, subject to
 easements for public roadways as shown hereon.

FEB., 13, 1937.

R. D. Wolgram
 REGISTERED LAND SURVEYOR

SCALE - 1" = 100'



4000