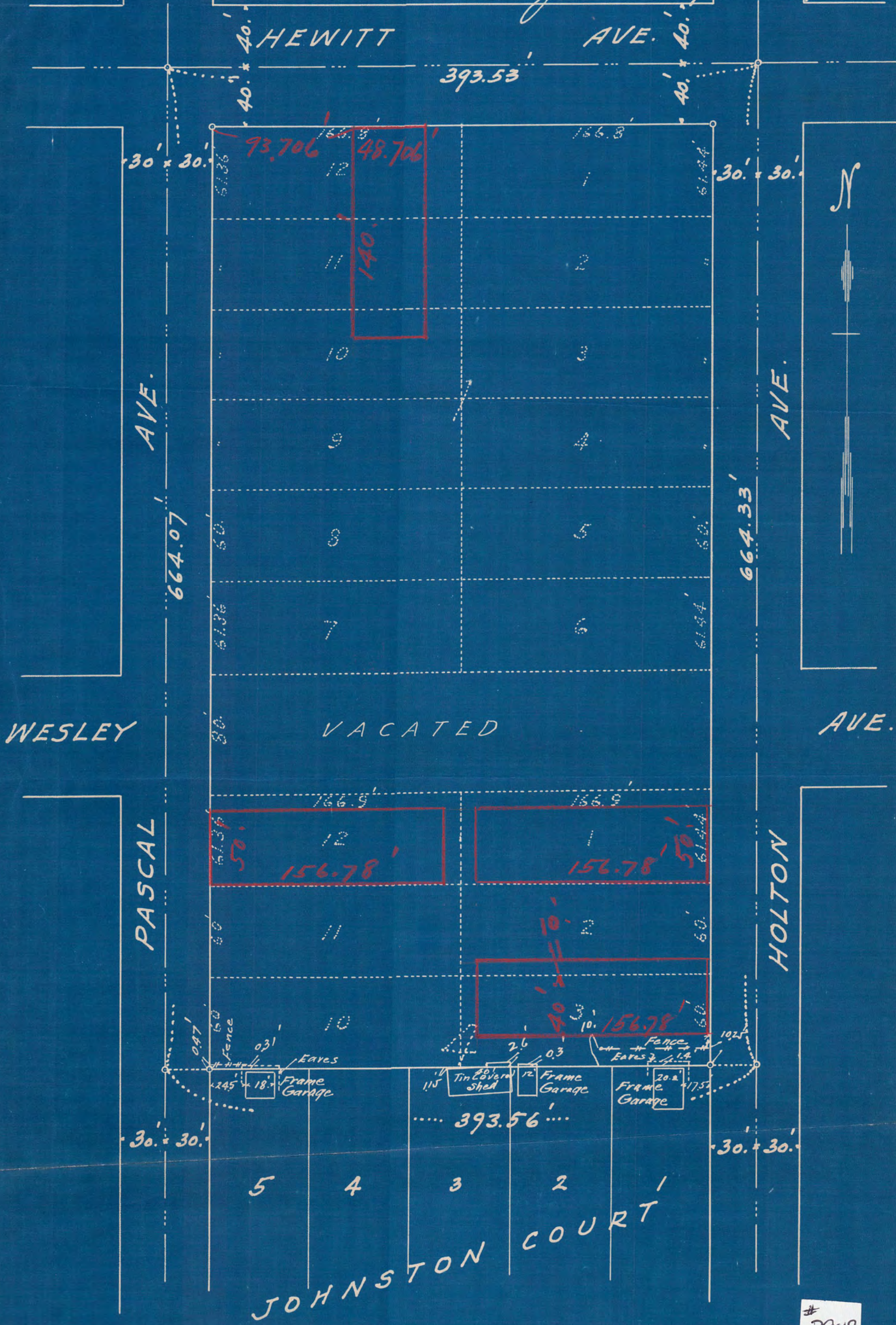


SURVEY OF BLOCK 1; LOTS 1-2-3
 10-11-12 BLOCK 4; WESLEY AVE. LYING
 BETWEEN SAID BLOCKS 1 & 4 VACATED
 ALL IN HAMLINE PLAT
 ST. PAUL, MINN.

Scale 60 feet per inch

Surveyed in August 1935
 J. J. Armstrong - Civil Engr.



3948