

PLAT OF LOTS 1, 2 and 3 BLOCK 1 HORNSBYS SUB.
OF LOT 7 BIDWELLS ADD. AND PART OF LOT G

3926

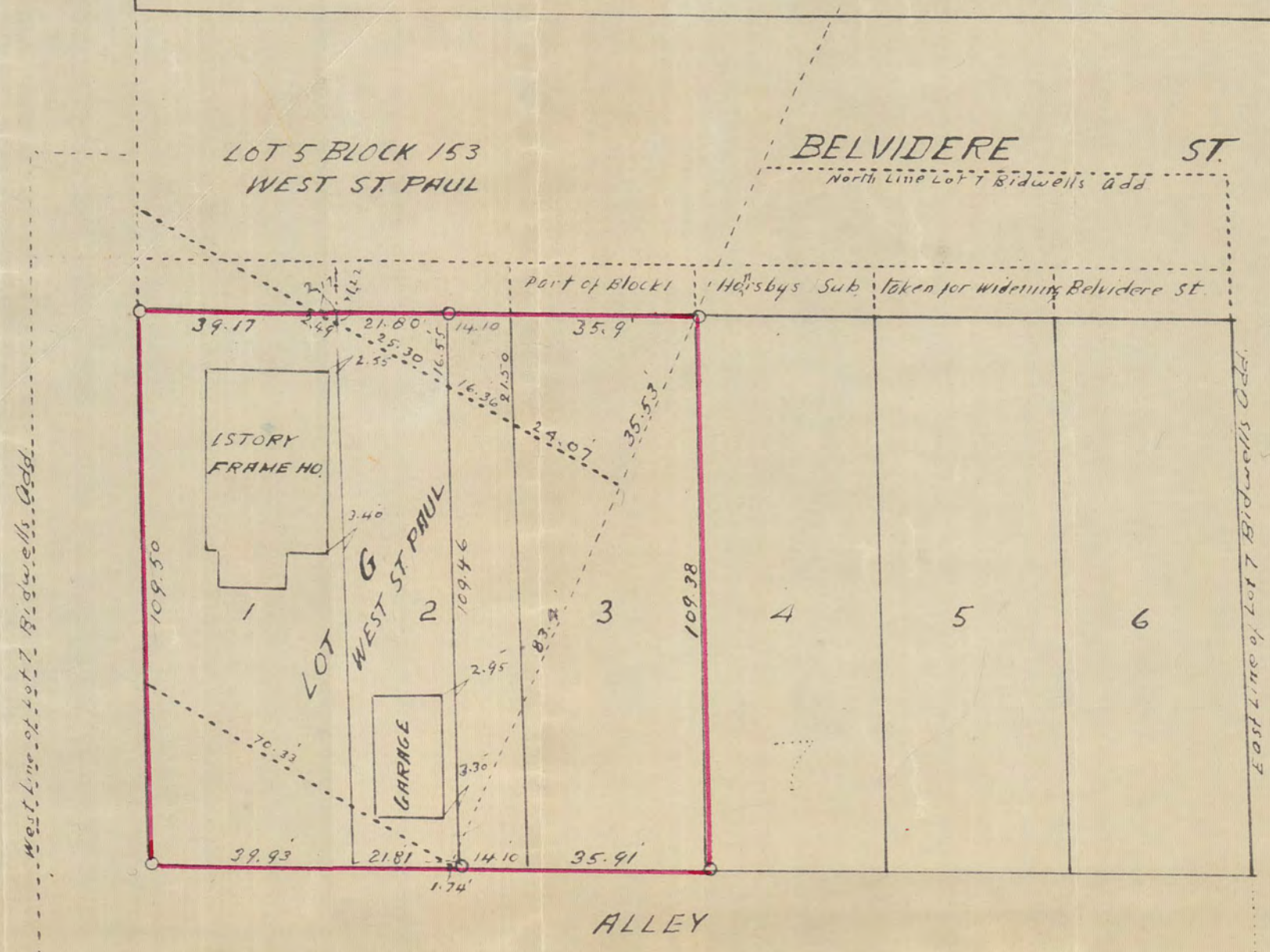
AVE.

WEST ST. PAUL

o Indicates Iron Mont.

Scale 30 Feet per Inch.

LIVINGSTON



state of Minnesota }
County of Ramsey } ss Charles Murray before me personally
appeared who being duly sworn deposes
and says that he is a resident of the City of St. Paul, Ramsey county
Minnesota that he is a registered Civil engineer and surveyor, that
on the 11th day of December 1934 he made a survey of Lots 1, 2 and 3
Block 1 Hornsbys Subdivision of Lot 7 Bidwells Addition and
part of Lot G, West St. Paul, that the above is a diagram of such survey
and that it is true and correct in all respects.

Charles Murray
Registered engineer and surveyor, No. 479

Subscribed and sworn to before me this 19. day of December 1934

Henry ...
Notary Public Ramsey County Minnesota

My Commission expires Sept 27 - 1939

3926