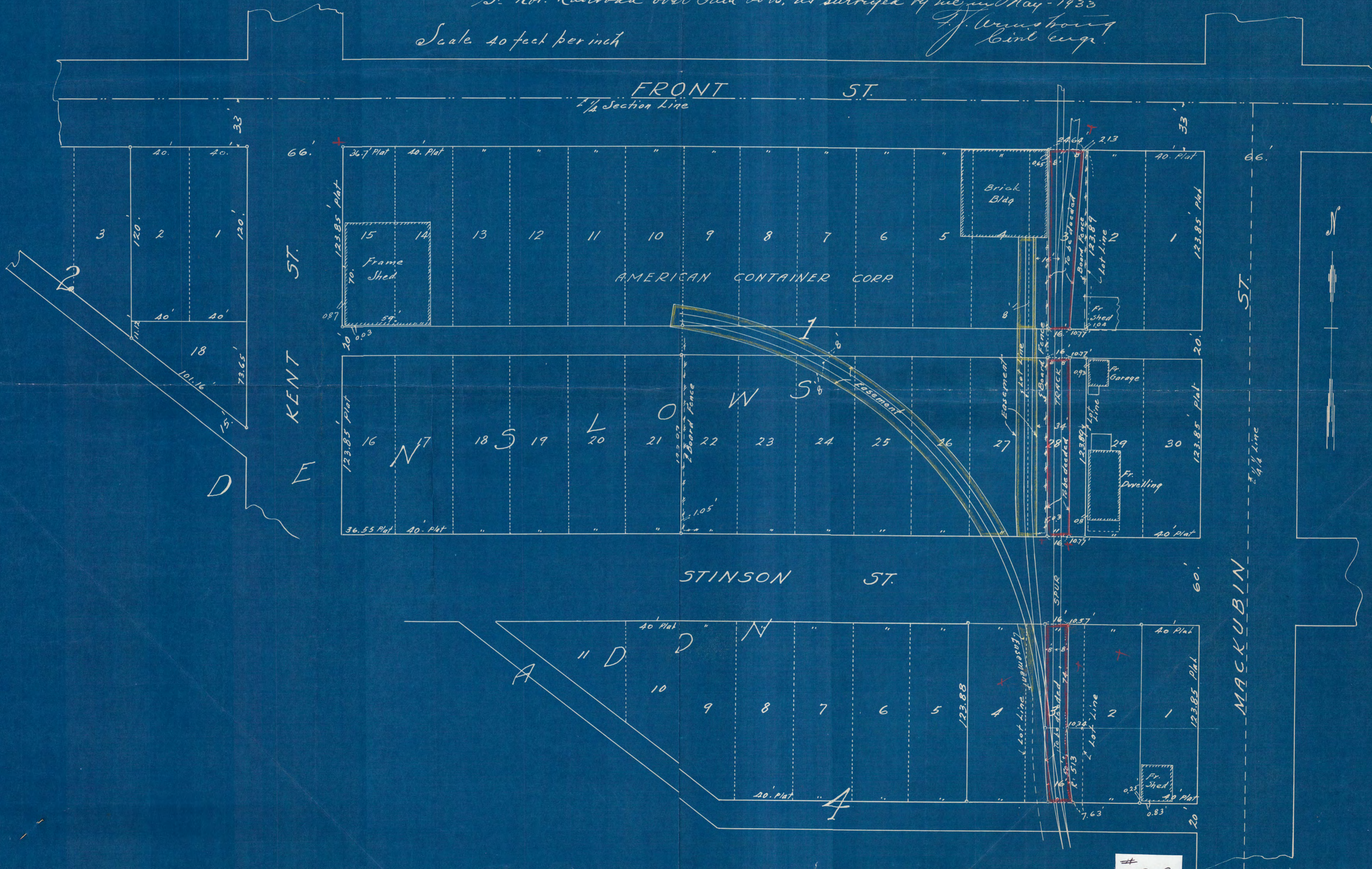


I hereby certify that this map correctly represents the spur track over Lots 3 & 28 Block 1 and Lot 3 Block 4 Deansburg Addition to St. Paul, Minn. together with the right of way to be added to the St. Nor. Railroad over said lots, as shrouged by me in May-1933
J. Armstrong
Civil Engr.

Scale 40 feet per inch



3908