

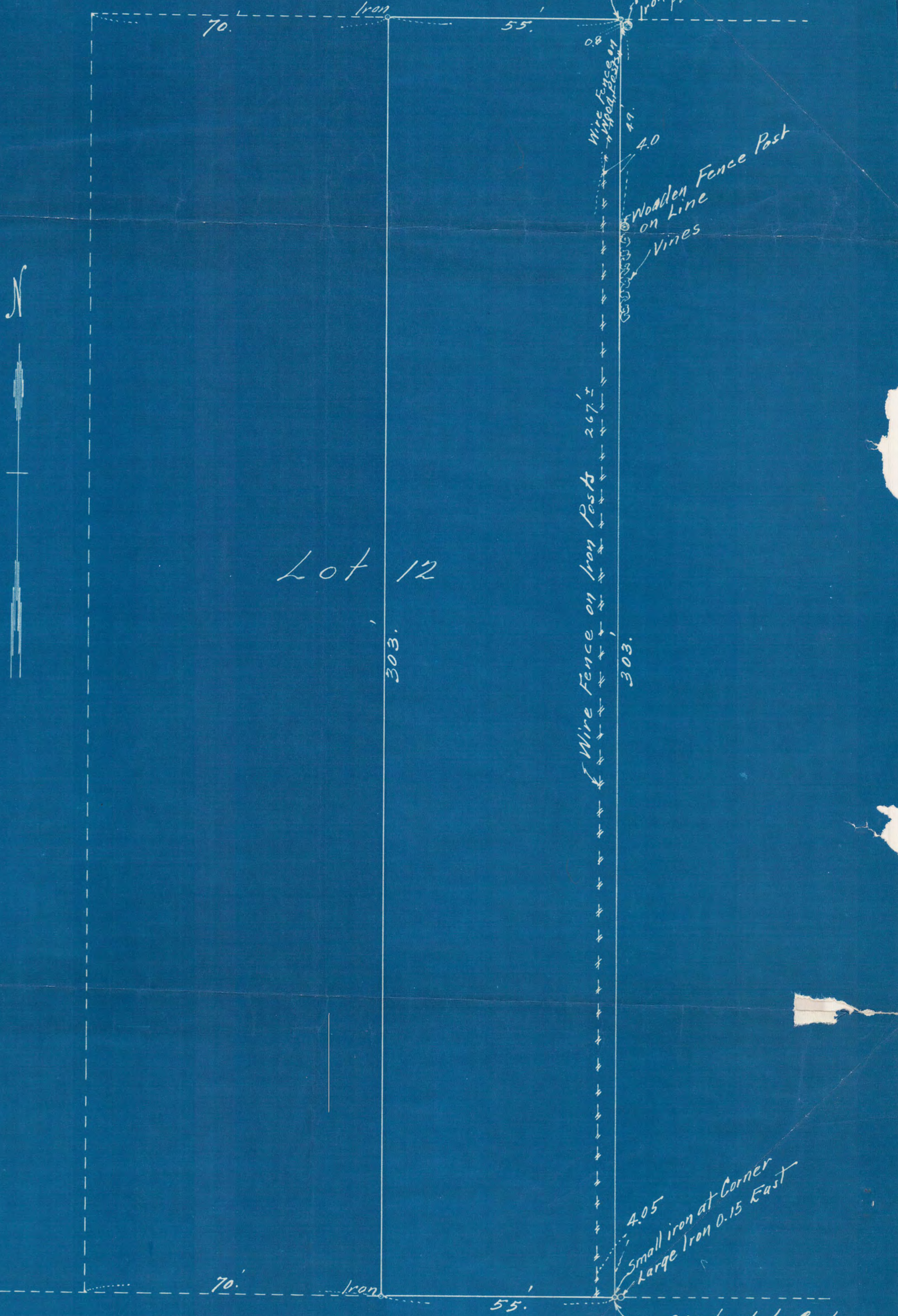
SURVEY OF LOT 12, EXCEPTING THE WESTERLY
70 FEET THEREOF, IN BLOCK 31 SUBURBAN HILLS
ST. PAUL, MINN.

Surveyed August 29, 1931

A. Burns having
been left.

Scale 20 feet per inch

Exhibit B



Lot 12

BURNS AVE.

3850

PART OF SUBURBAN HILLS
ST. PAUL, MINN.

EXHIBIT A

F. J. Wrenshaw
Civil Engr.

Scale 100 ft. per inch



South Line of Burns Ave.
South Line of Section 33 Town 29 Range 22

3850