

A PLAT OF SURVEY OF
 LOTS 4, 5 and 6, LOT-9 (Except the Easterly 50 Ft.)
 AND THE EASTERLY STRIP OF LOT-8 MEASURING
 11.7 FT. ON SEVENTH ST. AND 10 FT. WIDE AT REAR.
 ALL IN BLOCK-26, WHITE BEAR.

P.R. BANISTER - CIVIL ENGR.

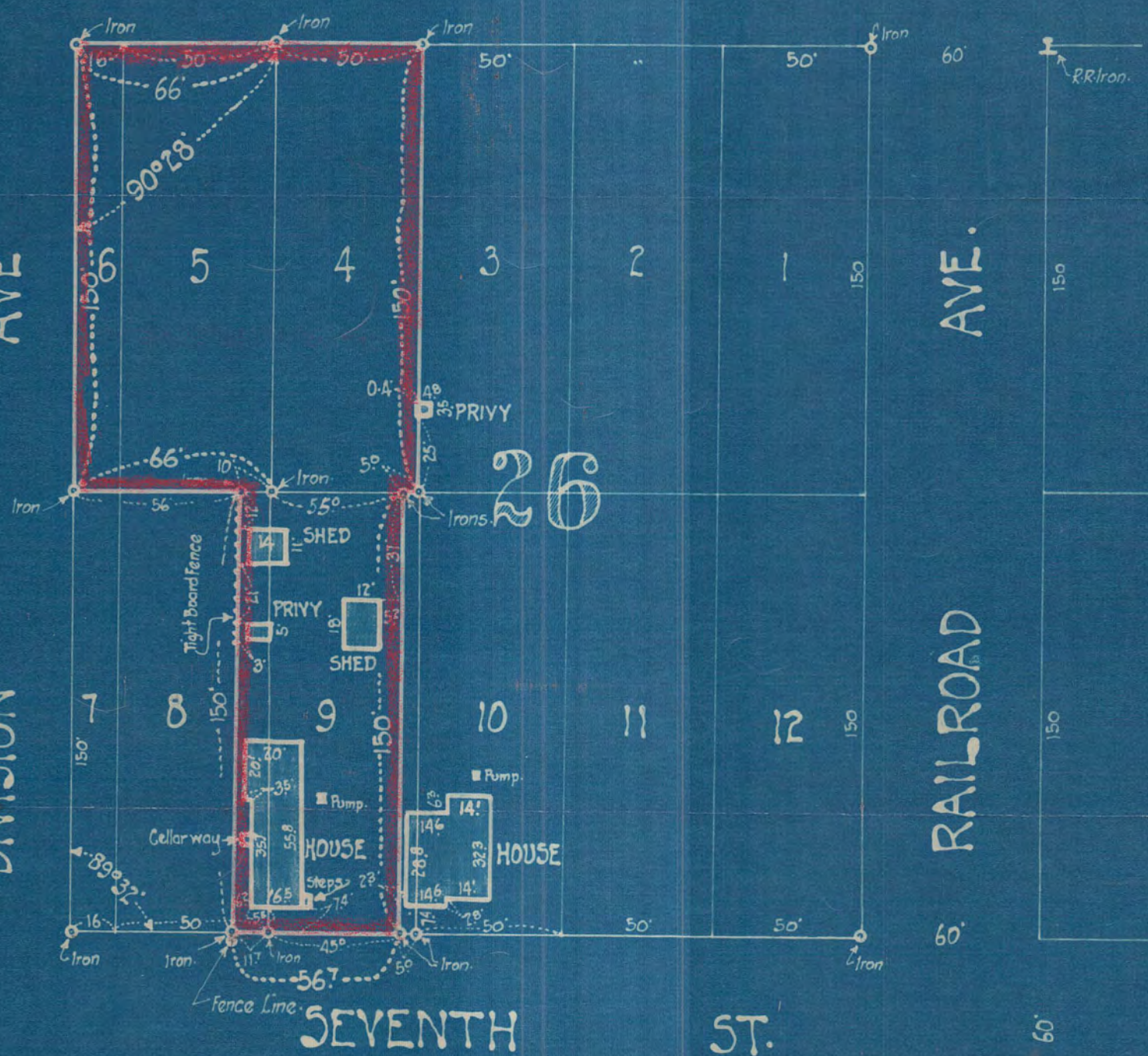
EIGHTH ST.

DIVISION AVE

RAILROAD AVE.

SEVENTH ST.

26



White Bear, Minn. Nov. 4th 1924 Scale - 1" = 50'

I, P.R. Banister, Registered Professional Engineer and Surveyor hereby certify that I have surveyed the premises as shown on the annexed plat and that said plat is a true and correct representation of such survey

Signed - P.R. Banister

June, 3, 1931

3836