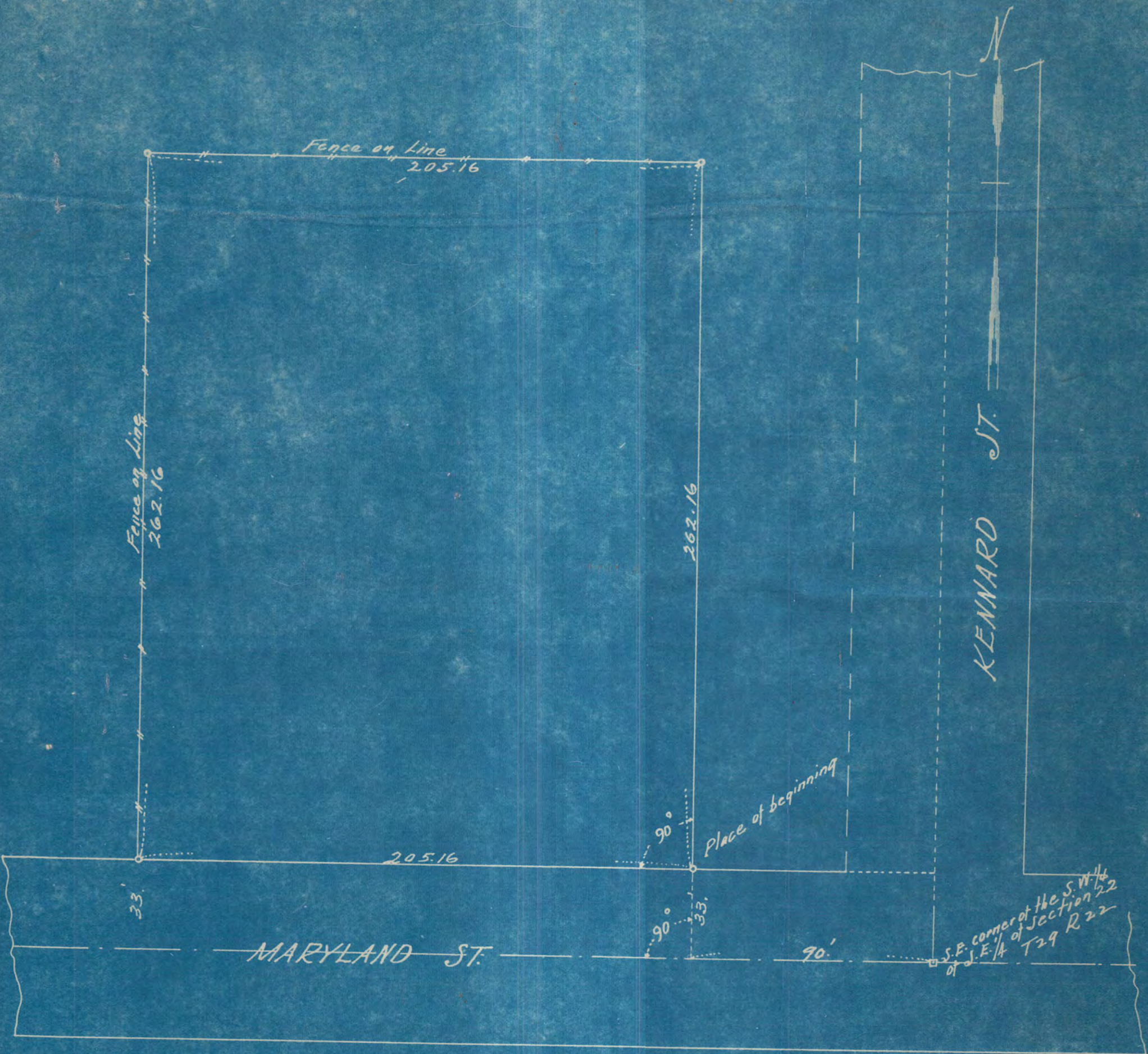


Strong  
Civil Engineer & Surveyor  
Minnesota



Scale 40 feet per inch

Subscribed and sworn to before me this  
15<sup>th</sup> day of February 1930  
Horace H. Glenn  
Notary Public  
My Commission Expires \_\_\_\_\_

I hereby certify that on the 12<sup>th</sup> day of February A. D. 1930, I made a survey of the following described property, to wit: Part of the Southwest 1/4 of the Southeast 1/4 of Section 22 Township 29 Range 22 St. Paul, Minn. above described.

and the map hereon shown is a true and correct map of said survey and that the improvements thereon indicated are correctly shown.

J. Strong Civil Engineer  
PATENT APPLIED FOR.

# 3753