

SURVEY OF

N. 1/2 of N. 3/5 of E. 1/2 of SE. 1/4 of SW. 1/4 of SW. 1/4 of Sec. 22, T. 29 N. R. 22 W.

AND

N. 1 Acre of W. 1/2 of S.E. 1/4 of SW. 1/4 of SW. 1/4 of Sec. 22, T. 29 N. R. 22 W.

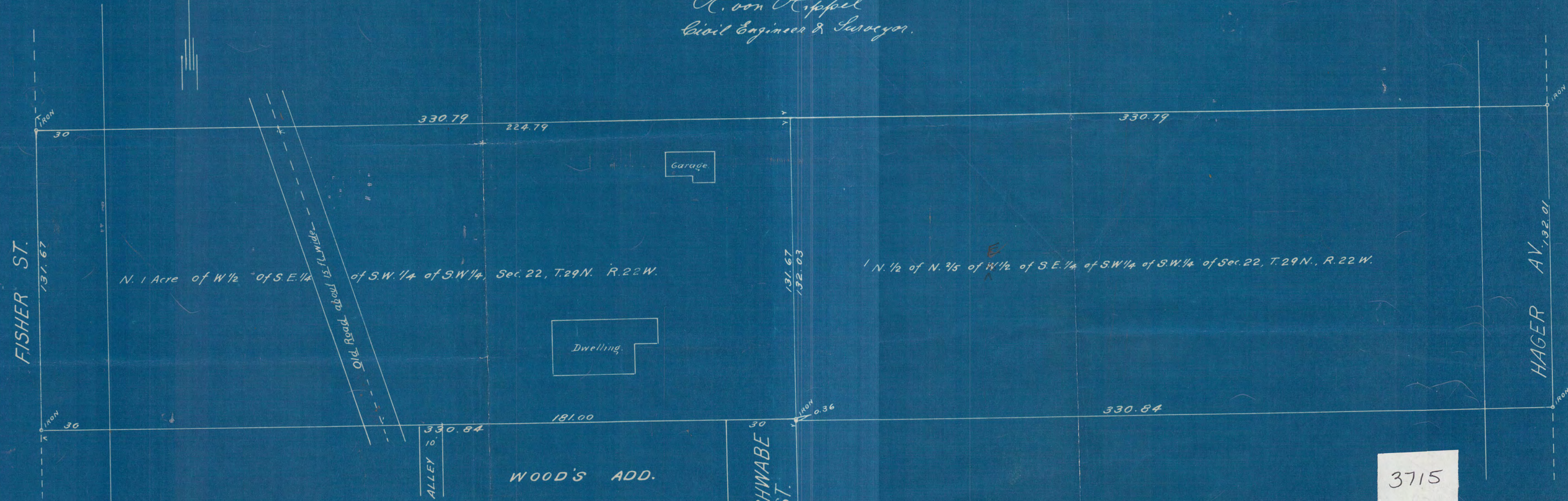
I certify that the corners of these tracts are correctly staked, as indicated, that all Streets and Highways are shown and that there are no encroachments by adjoining owners.

SCALE: 30' = 1"

ST. PAUL, Minn.

Jan. 7TH 1930

H. von Hippel
Civil Engineer & Surveyor.



3715