

SURVEY OF

That part of Lots 6, 7 & 8 of Buel & Mackubin's Outlots in S.W. 1/4 of Sec. 35 T.29 R.23 lying S. of Rondo St. described as follows; that part S. of Rondo of said Lot 6, except the E. 35 ft.; that part of said Lot 7, S. of Rondo St., except N. 134.64 ft. of that part thereof lying W. of a line 313. ft. E. of Lexington Ave. and parallel thereto; that part of Lot 8, S. of Rondo St. except the N. 134.0 feet of that part lying E. of a line 273.0 ft. E. of Lexington Ave. and parallel thereto.

OCT. 5, 1929

JENS PEDERSEN
SURVEYOR

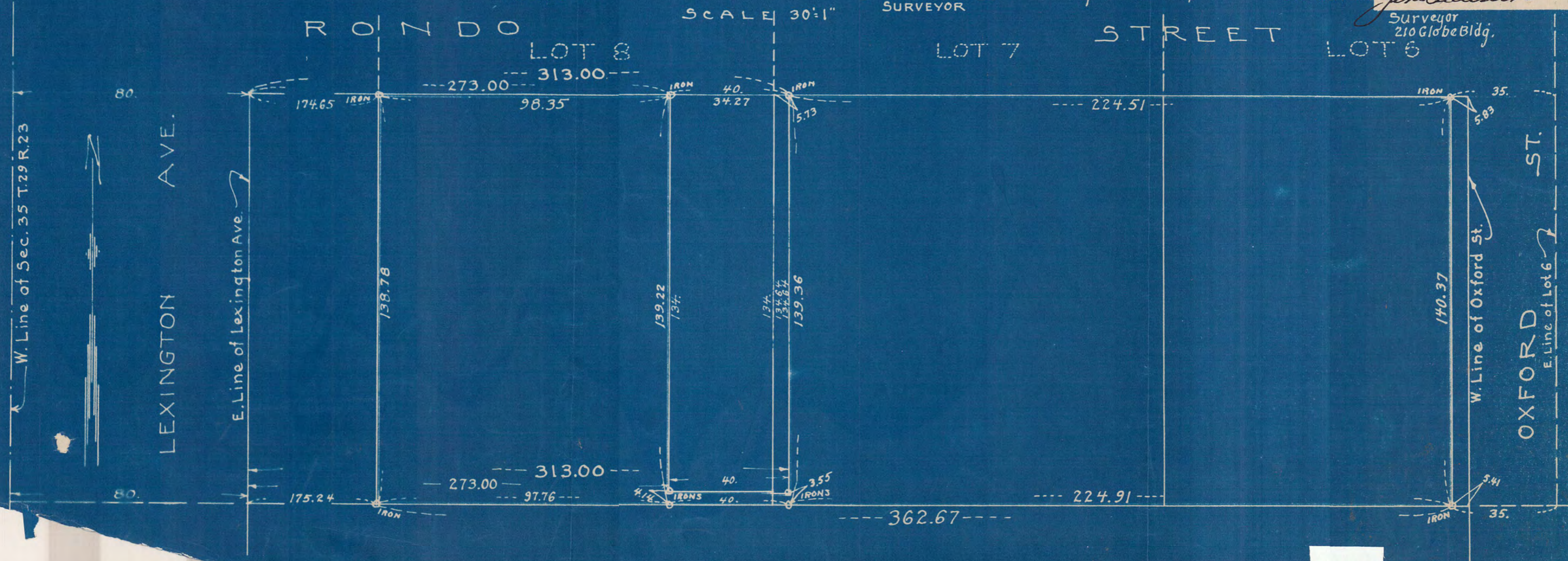
Subscribed and sworn to before me this day of A.D. 1929

Notary Public, Ramsey Co. Minn.
My Commission Expires

St. Paul, Minn. Oct. 5, 1929
I certify to having surveyed the above described property and that all distances and locations as hereon shown are correct.

Jens Pedersen
Surveyor
210 Globe Bldg.

SCALE 30'=1"



3666