

# CERTIFICATE OF SURVEY

LOT 3

BLOCK 56

IRVINE'S ENLARGEMENT OF  
RICE & IRVINE'S ADD.

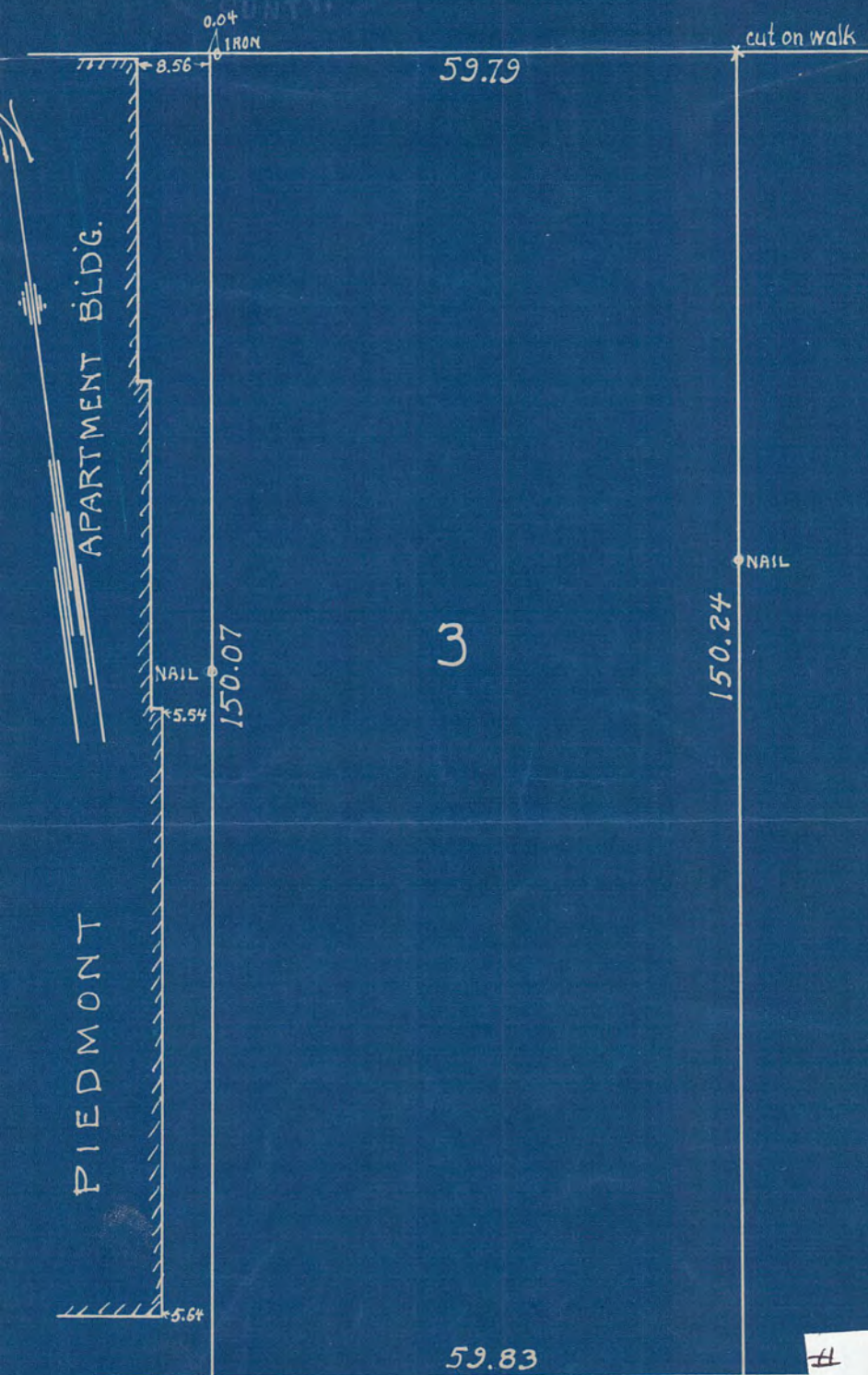
Scale 20' = 1"

Subscribed and sworn to  
before me this 26 day  
of April A.D. 1929  
*Jens Pedersen*  
Notary Public, Ramsey Co. Minn.  
My Commission Expires 1/5/1931

St. Paul, Minn. Feb. 5, 1929  
I certify to having surveyed  
the above described property  
and that all distances and  
locations as hereon shown  
are correct.

*Jens Pedersen*  
Surveyor  
210 Globe Bldg.  
ST.

W. NINTH



# 3663