

CERTIFICATE OF SURVEY

3579

N. 34.84 FT. OF LOTS 15 & 16 BLOCK 20

E. W. HAWKE'S SUB.

Scale 20:1"

Subscribed and sworn to before me this 29th day of June A.D. 1928

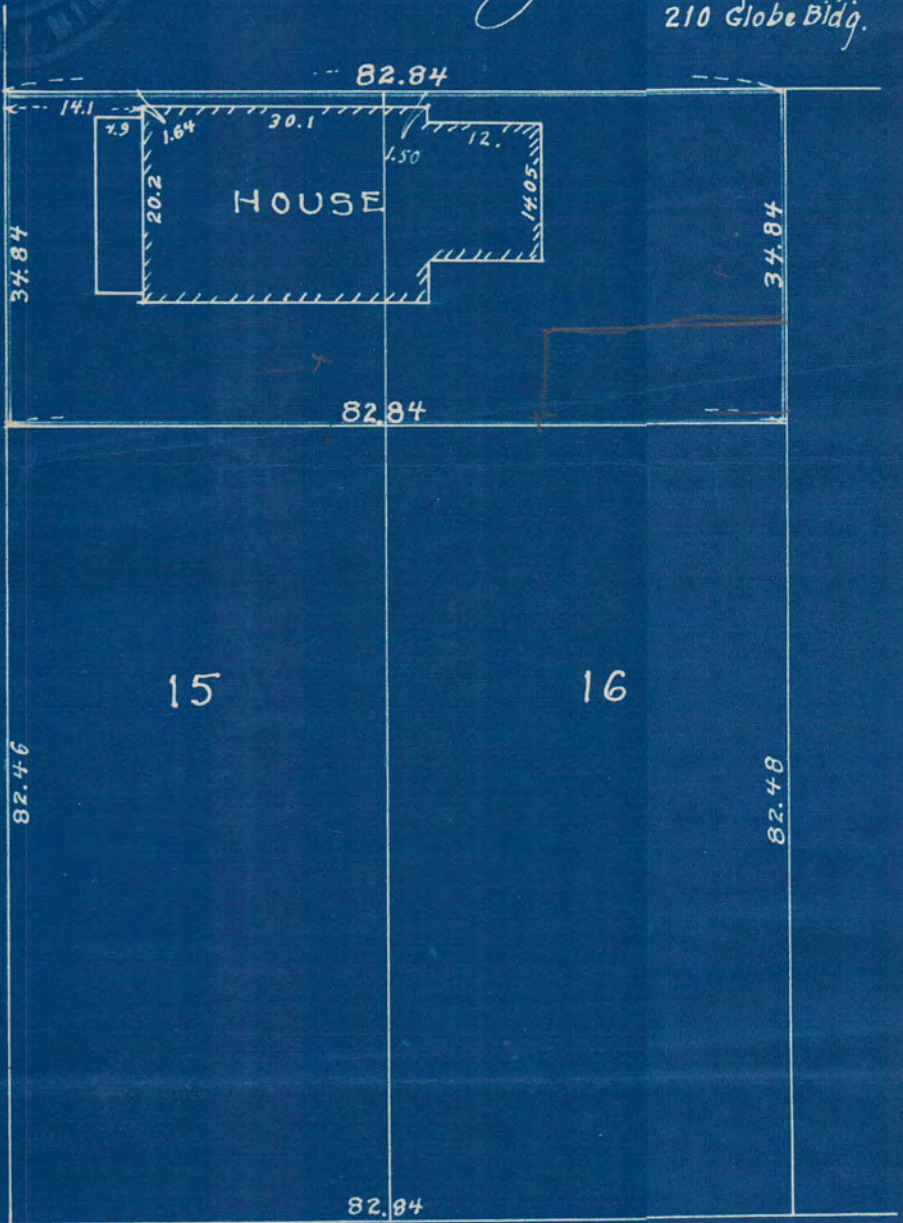
Notary Public, Ramsey Co. Minn.

My Commission Expires July 1, 1933

St. Paul, Minn. June 6, 1928
I certify to having surveyed the above described property and that all distances and locations as hereon shown are correct.

Jens Pedersen
Surveyor
210 Globe Bldg.

DUKE ST.
GOODHUE ST.



3579