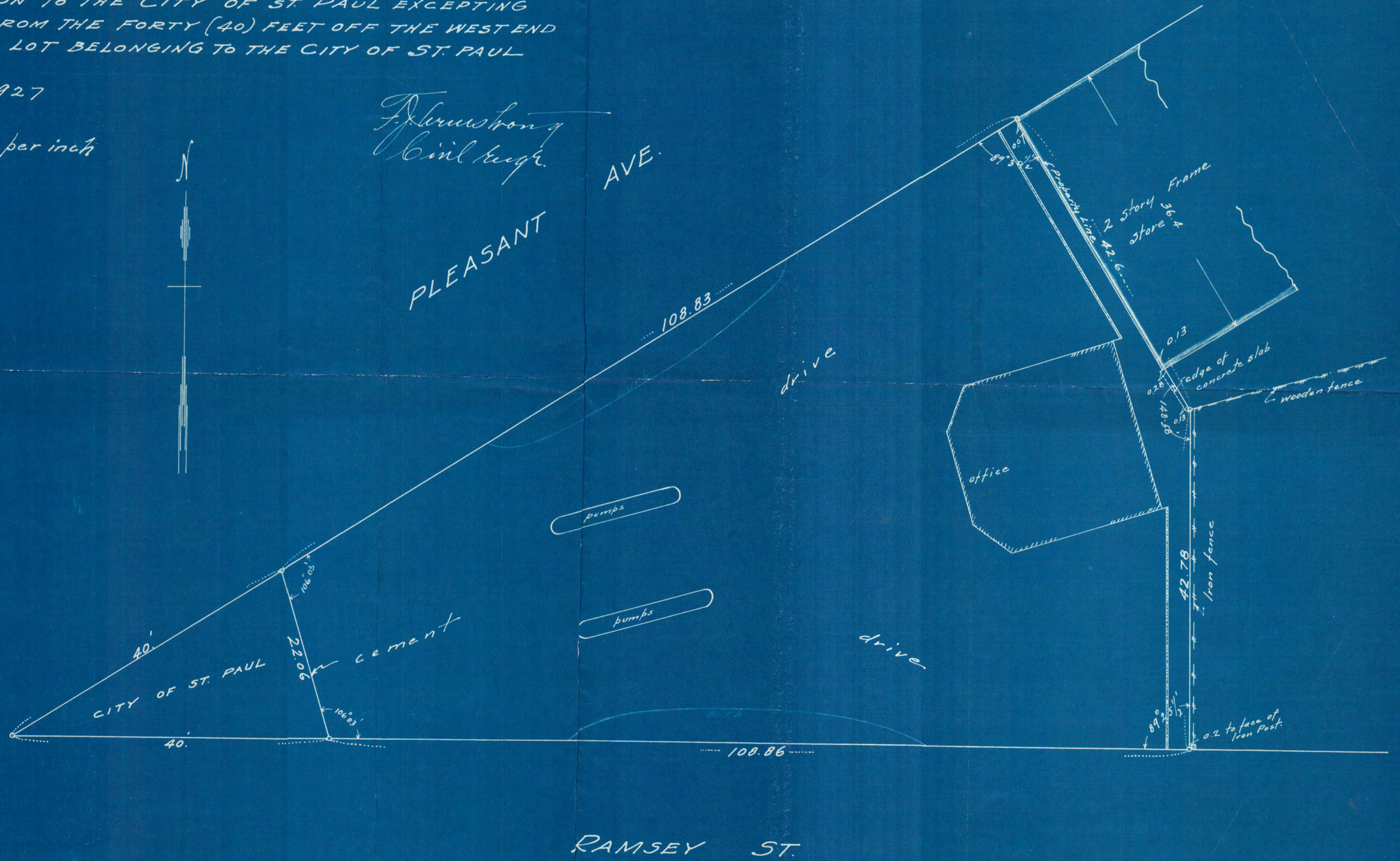


SURVEY OF LOT 14 BLOCK 68 DAYTON & IRVINE'S
ADDITION TO THE CITY OF ST. PAUL EXCEPTING
THEREFROM THE FORTY (40) FEET OFF THE WEST END
OF SAID LOT BELONGING TO THE CITY OF ST. PAUL

May 19-1927

Scale 10 ft. per inch

F. Armstrong
Civil Engr.



3499