

CERTIFICATE OF SURVEY

23.85 ft. on the S. side of W. Fourth St. Lot 5, Block 63 Irvine's Encl. of Rice & Irvine's ^{ADD} according to the plat thereof on file and of record in the Office of the Register of Deeds in and for said County, specifically described as follows; Commencing at a point on the S. side of W. Fourth St. 24.33 ft. NWLY. from the N.E. corner of Lot 5 (being the St. Cor. between Lots 4 & 5); thence in a straight line SWLY. 136.03 ft. more or less to a point on the N. line of an alley in the rear of said lot, 22 ft. NWLY. from the SELY. corner of said lot (being the alley corner between lots 4 & 5); thence along said last named line 26.03 ft. to a point on said line which is 13.77 ft. SELY. from the corner on said alley between Lots 5 & 6; thence in a straight line NELY. 136.03 ft. to a point on said S. line of W. Fourth St. which is 13.77 ft. SELY. from the corner on said W. Fourth St. between Lot 5 & 6; thence along said S. line of W. Fourth St. SELY. to the point of beginning, which is a plot of land with the following dimensions; being 23.85 feet on West Fourth, 26.03 ft. on the alley in rear and sides is 136.03 feet. Except all that part of the above described tract which lies NLY. of a line drawn from a point on the SWLY. side of Fourth St. 84.13 ft. S.E. of the N. corner of said block 63 to a point on the SELY. side of Pleasant Ave. 55.11 ft. SWLY. of the NLY. corner of said block, the said line being the SWLY. line of W. Fifth St. produced NWLY. to Pleasant Ave.

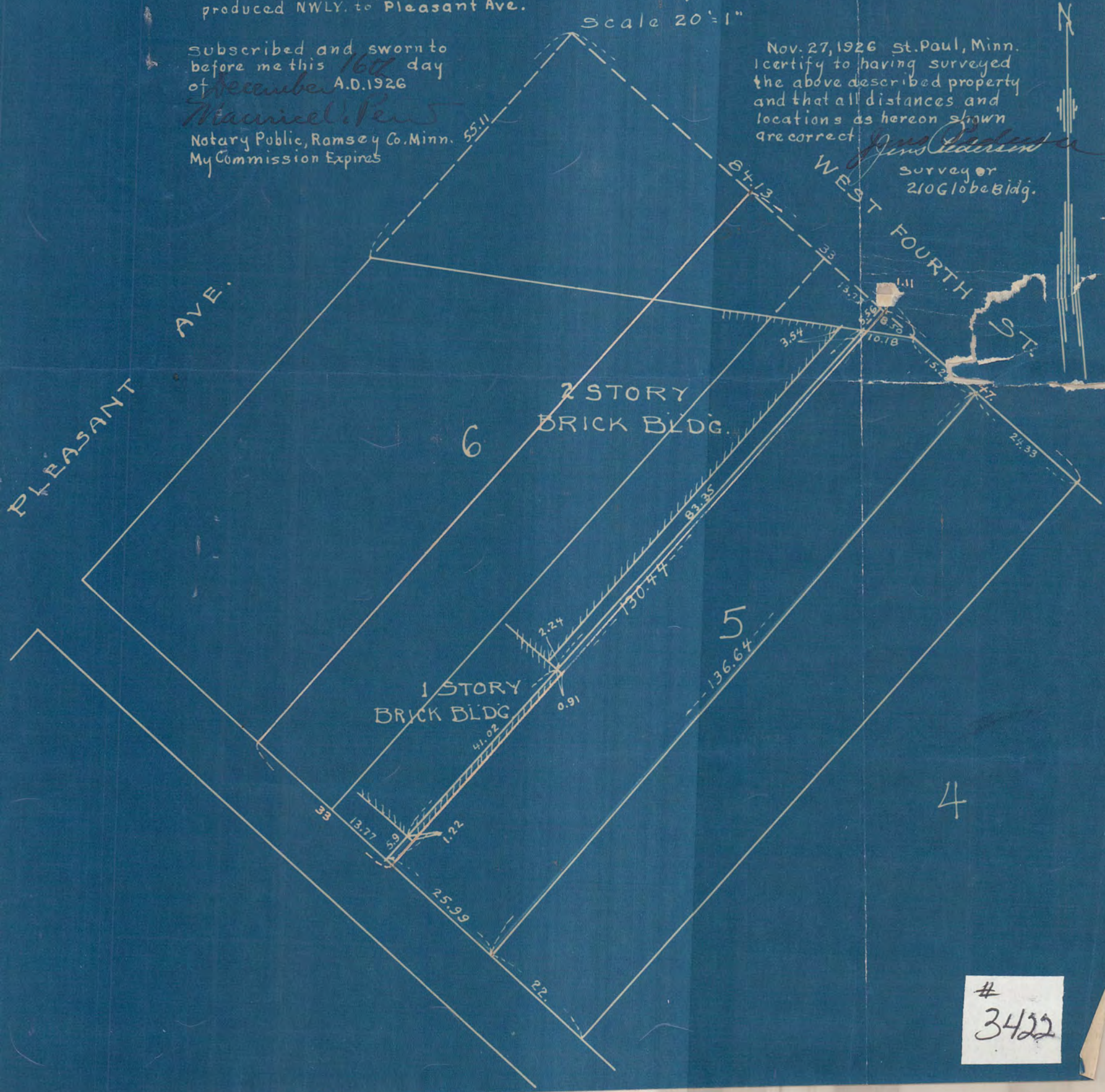
Scale 20' = 1"

Subscribed and sworn to before me this 16th day of December A.D. 1926

Maurice Pen
Notary Public, Ramsey Co. Minn.
My Commission Expires

Nov. 27, 1926 St. Paul, Minn.
I certify to having surveyed the above described property and that all distances and locations as hereon shown are correct

J. J. ...
Surveyor
210 Globe Bldg.



3422