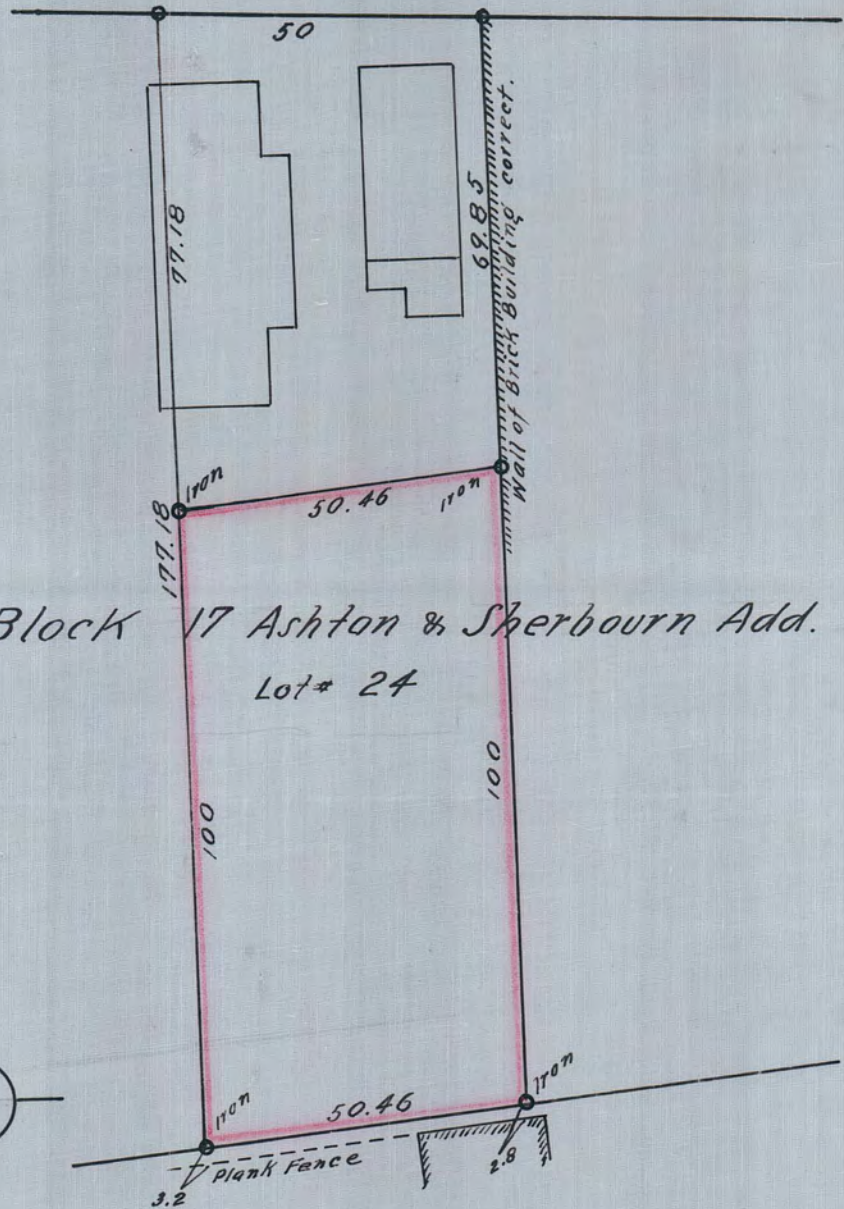


Glencoe St.



Block 17 Ashton & Sherbourn Add.
Lot # 24

Scale: 30' = 1"

I certify that the dimensions shown
are correct and corners correctly
staked.

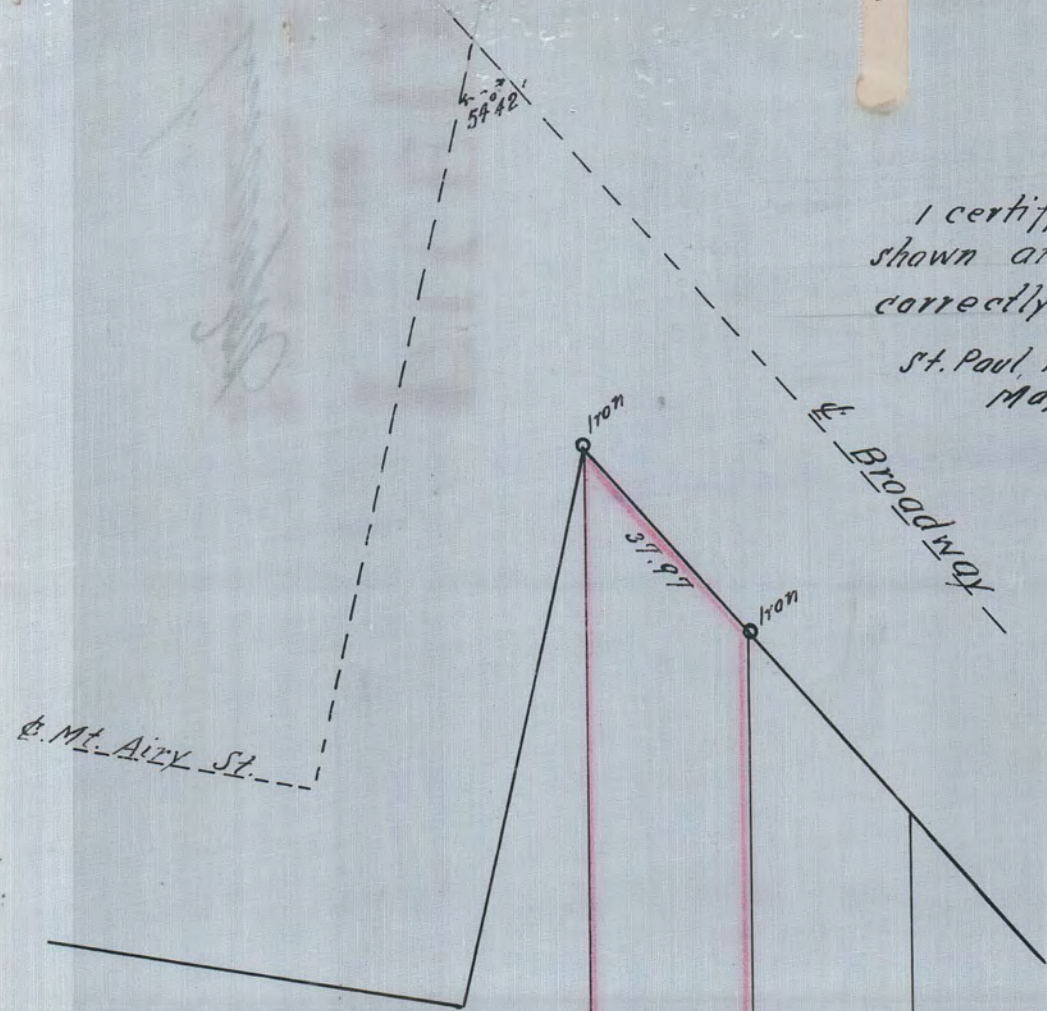
St. Paul, Minn.
May 7th 26

H. von Hippel
Civil Eng. & Surveyor.

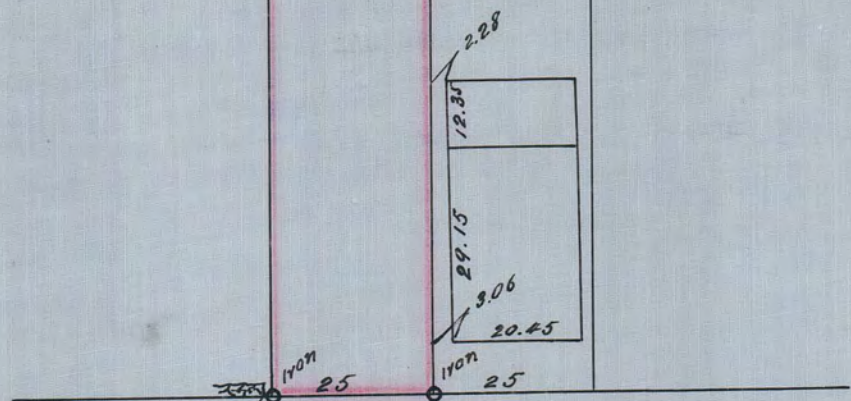
3297

I certify that the dimensions
shown are correct and corners
correctly staked.

St. Paul, Minn. H. von Hippel
May 7.-26 Civil Eng. & Surveyor.



Block 16 Ashton & Sherbourn Add.



Valley St.

Scale: 30' = 1"

3297