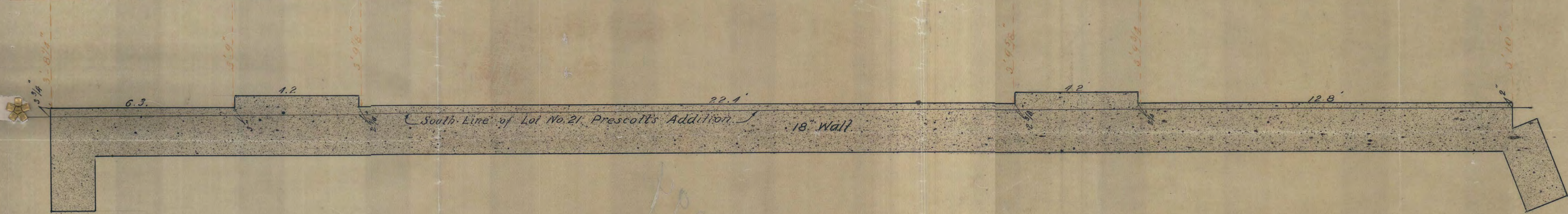


Plat showing relative Location of South Line of Lot 21, Prescott's Addition, West St Paul,
to Partition Wall.

Line 4' north of and parallel to Lot Line:



I certify that the figures and dimensions shown
on this Plat are correct.

St. Paul, Minn.
May 10th 26

H. von Hippel
Civil Engineer and Surveyor.

Note: This survey is based on Monuments in S. North
Line of Delos St. 250ft south of Lot Line shown
above.



St.
Wabasha
South

FILED
JUL 4 1880
CITY ENGINEER'S OFFICE
ST. PAUL, MINN.

3294