

7<sup>#</sup> ST.

BATES AVE.

North Easterly line of Bates St. S

South Easterly line of 7<sup>#</sup> ST.

225'

40'

Deed Colter to Stenberg.

225'

Parallel with Macke.

225'

fence on line 80' meas. 80' Auditors sub.

parallel with 7<sup>#</sup> ST.

Parallel with Bates

237.12 meas.

fence

11. 12. Auditors Sub-div. No. 19.

237.58 meas. 237.92 Aud. for Sub. fence 237.207

20'

200'

South westerly line of Maple St. S

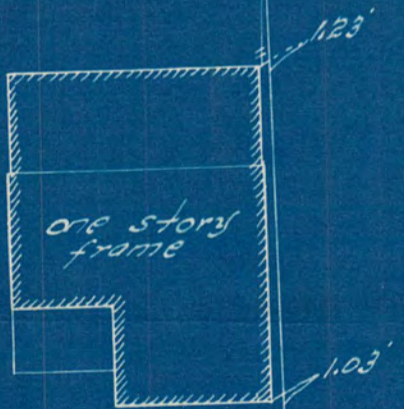
MAPLE ST.

WIRTH PLACE.

SURVEY OF MISC. STRIP IN BLOCK 12  
LYMAN DAYTON'S ADD'N  
Scale 20 ft. per inch.

Aug. 1925

J. Armstrong  
C. A. Knapp



278.78'

North westerly line of 6<sup>#</sup> ST.

6<sup>#</sup> ST.

# 3247