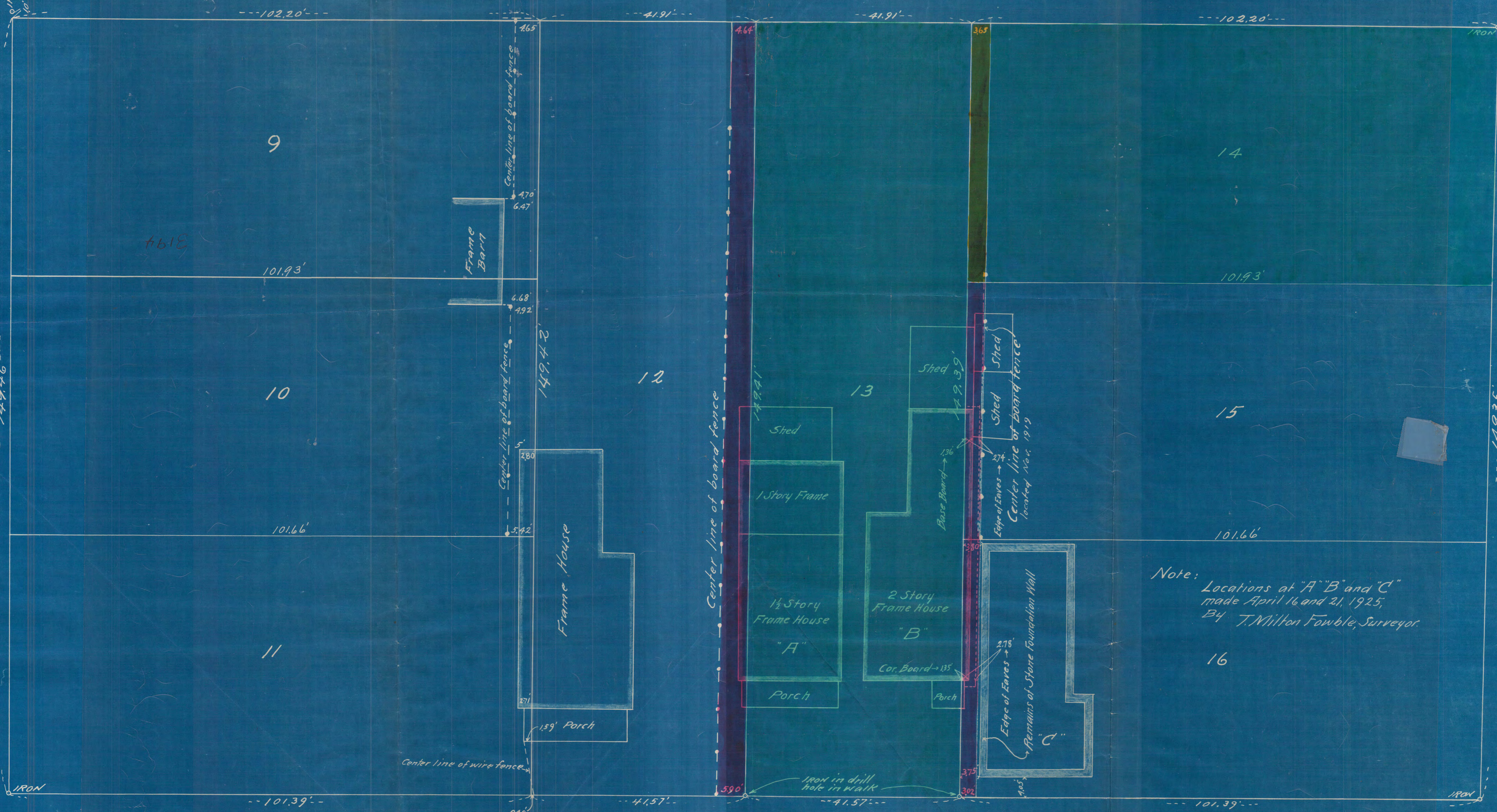


ST.

20

ALLEY



MISSISSIPPI

PINE

N.



Note: Locations at "A" "B" and "C" made April 16 and 21, 1925, By T. Milton Fowble, Surveyor.

Scale: 10' to 1"

Plat of Survey of the South one half of Block 2, Dayton's Addition to the Town of St. Paul, Surveyed by T. Milton Fowble, Surveyor in October 1921, for Great Northern Railway Company.

Correct. T. Milton Fowble, Surveyor Oct. 21, 1921.