

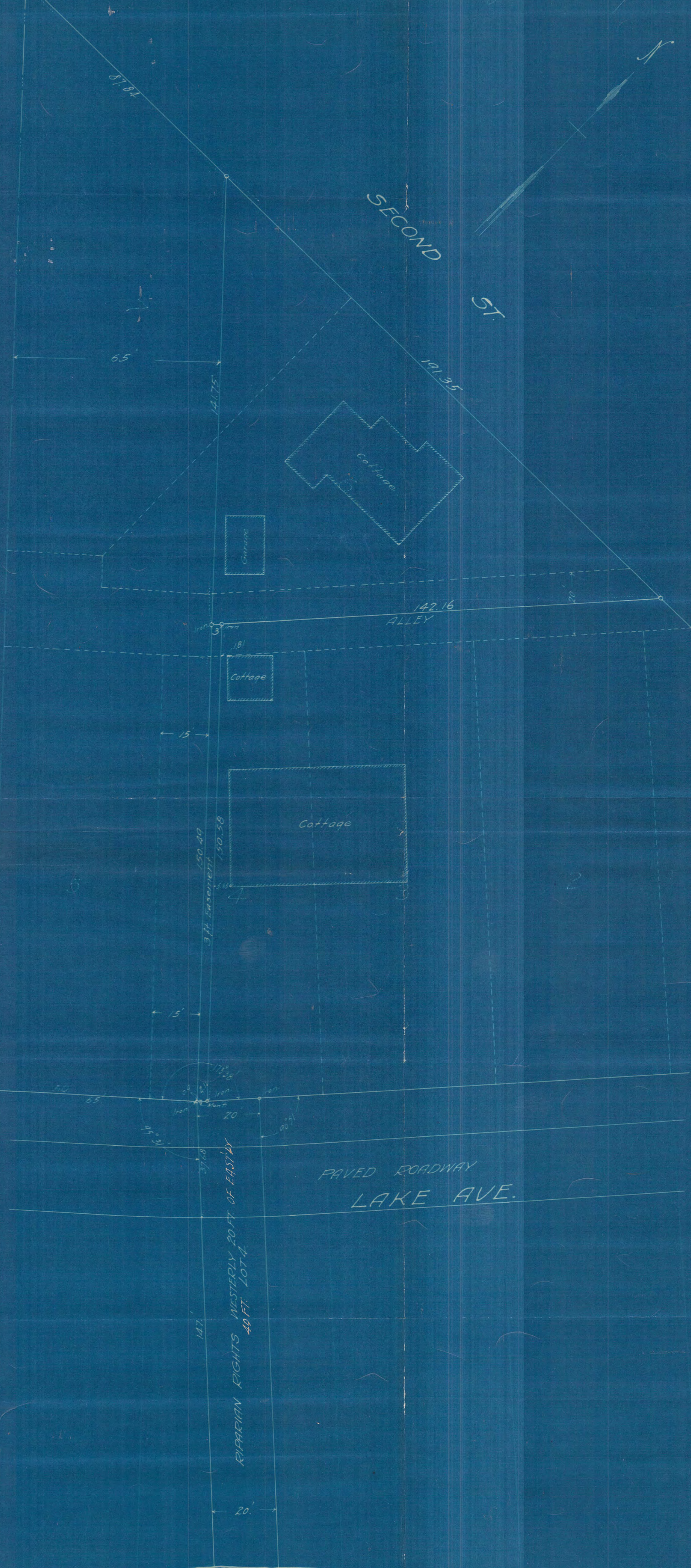
SURVEY OF PART OF LOTS 4-6 & 7  
OAKLAWN ADDITION  
WHITE BEAR, RAMSEY CO. MINN.

Scale 20 ft. per inch.

Jan. 6-1925

F. Armstrong  
Civil Eng.

Northwest corner  
Oaklawn Addition



WHITE BEAR LAKE