

Exhibit A

LOT 1 BLOCK 3 RICE IRVINE

ST. PAUL, MINN.

October 1923

Scale 10 ft. per inch.

Wm. W. ...
City Eng.

brick bldg.
I.O.O.F. HALL

Private drive

9" concrete wall.

84.29

brick Bldg.

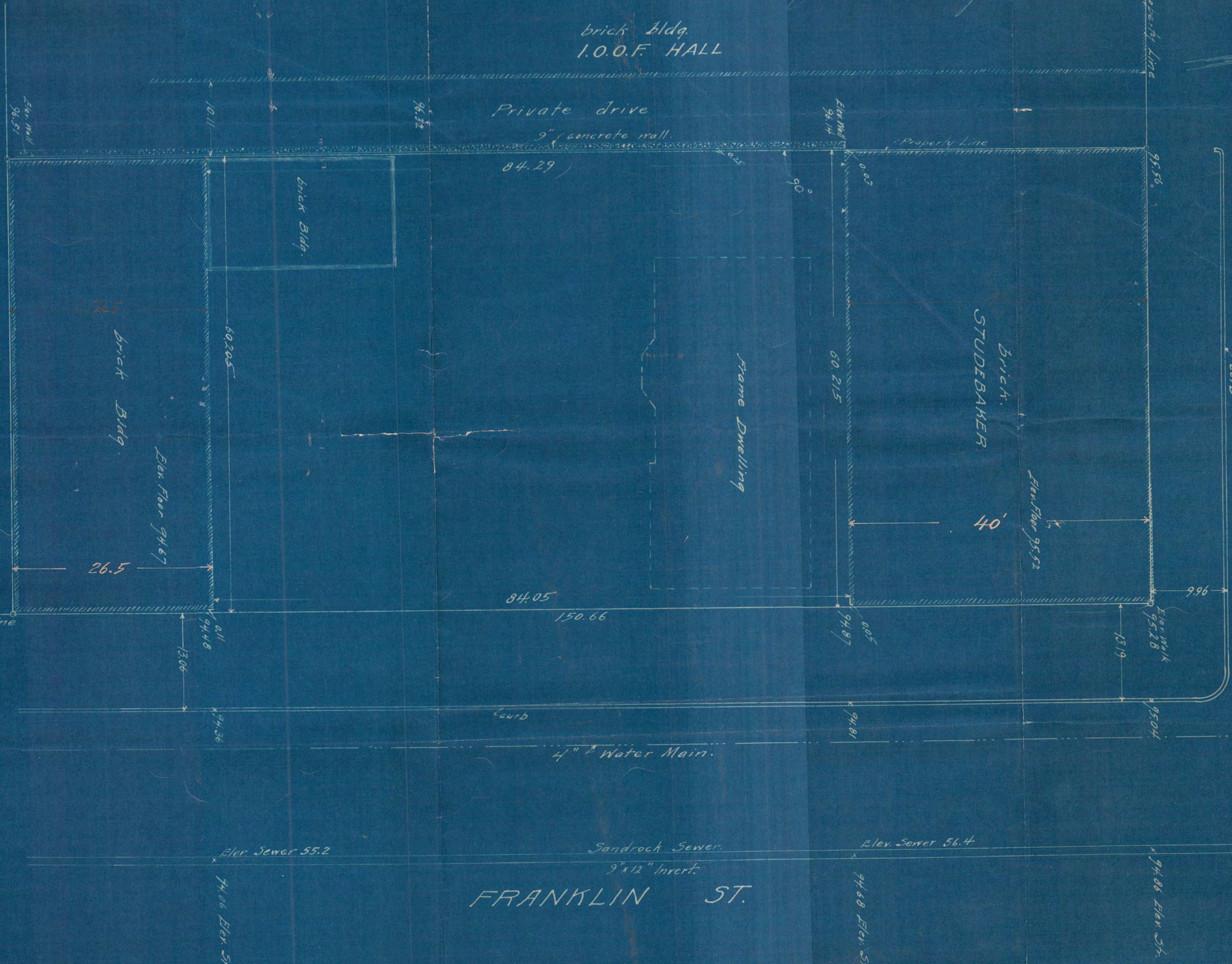
Frame Dwelling

brick.
STUDEBAKER

40'

NINTH ST.

Sandrock Sewer
9" x 12" Invert



FRANKLIN ST.

3081