

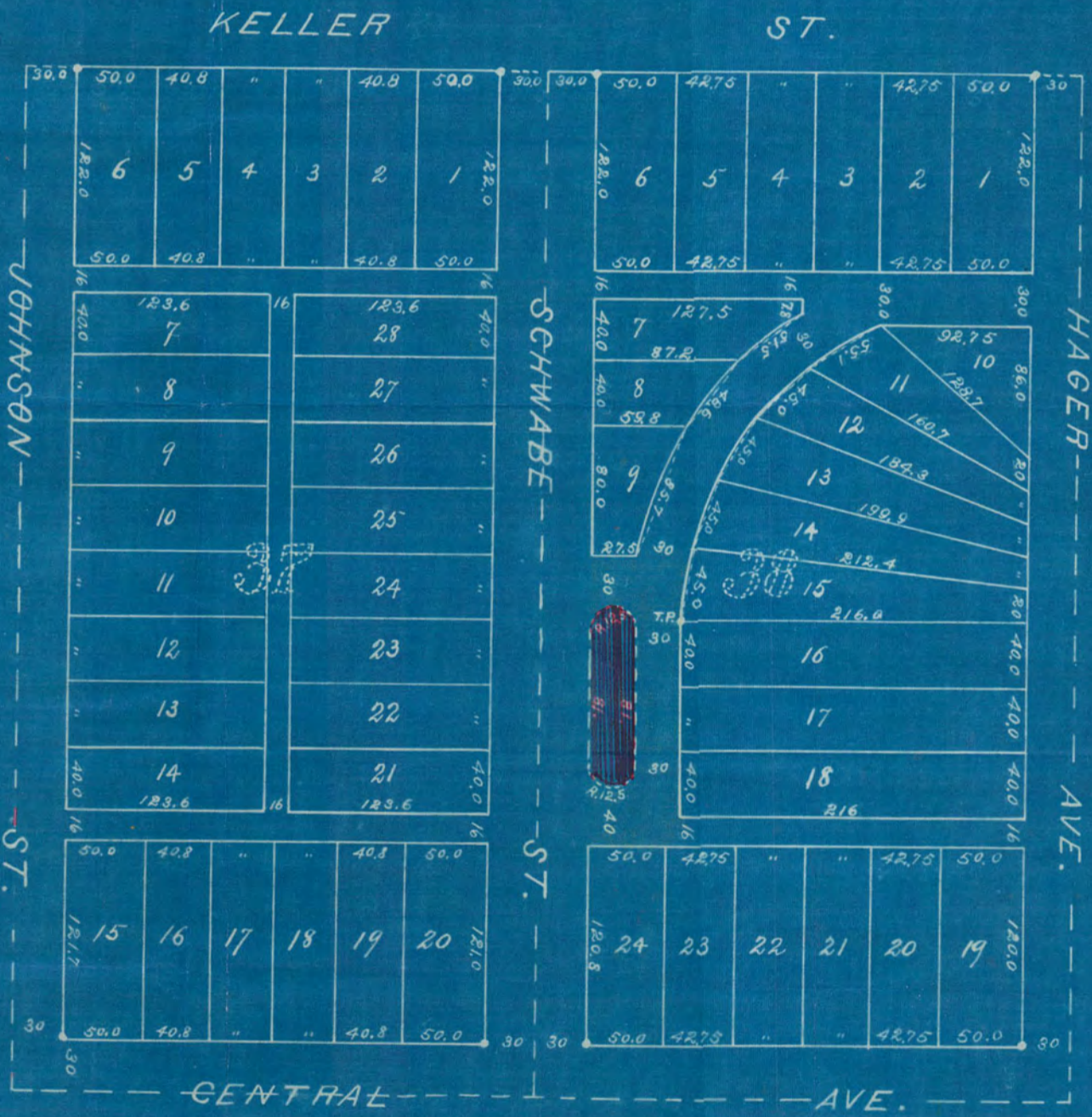
MAYFIELD'S

SUBDIVISION OF LOTS 37 & 38

PIONEER REAL ESTATE & BUILDING SOCIETY'S SUB.
ST. PAUL

• INDICATES IRON MONUMENT

FOWBLE & FITZ,
LAND SURVEYORS,
ROOM 67 UNION BLOCK
ST. PAUL, MINN.



3032