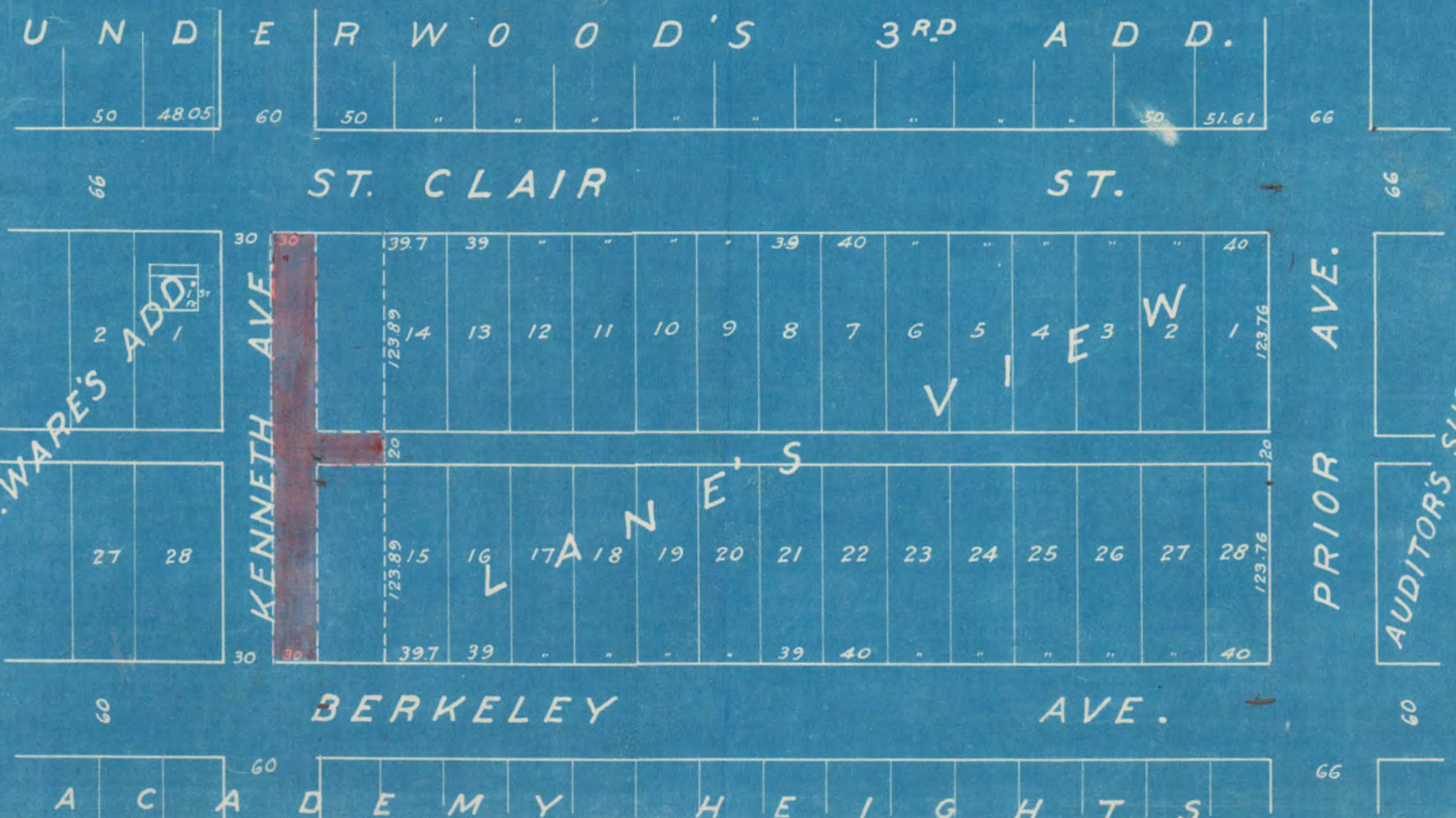


2948

KENNETH AVE.
BERKELEY AVE and ST. CLAIR ST.
ALLEY from W. LINE of LANES VIEW ADD.

KENNETH AVE
BERKELEY AVE AND ST. CLAIR ST.
ALLEY FROM WEST LINE of LANES VIEW ADD.

OPENING
Bureau of Engineers
MARCH 1 1922
Scale 1" = 100'
XVIII 16419



Loc. 990

2948