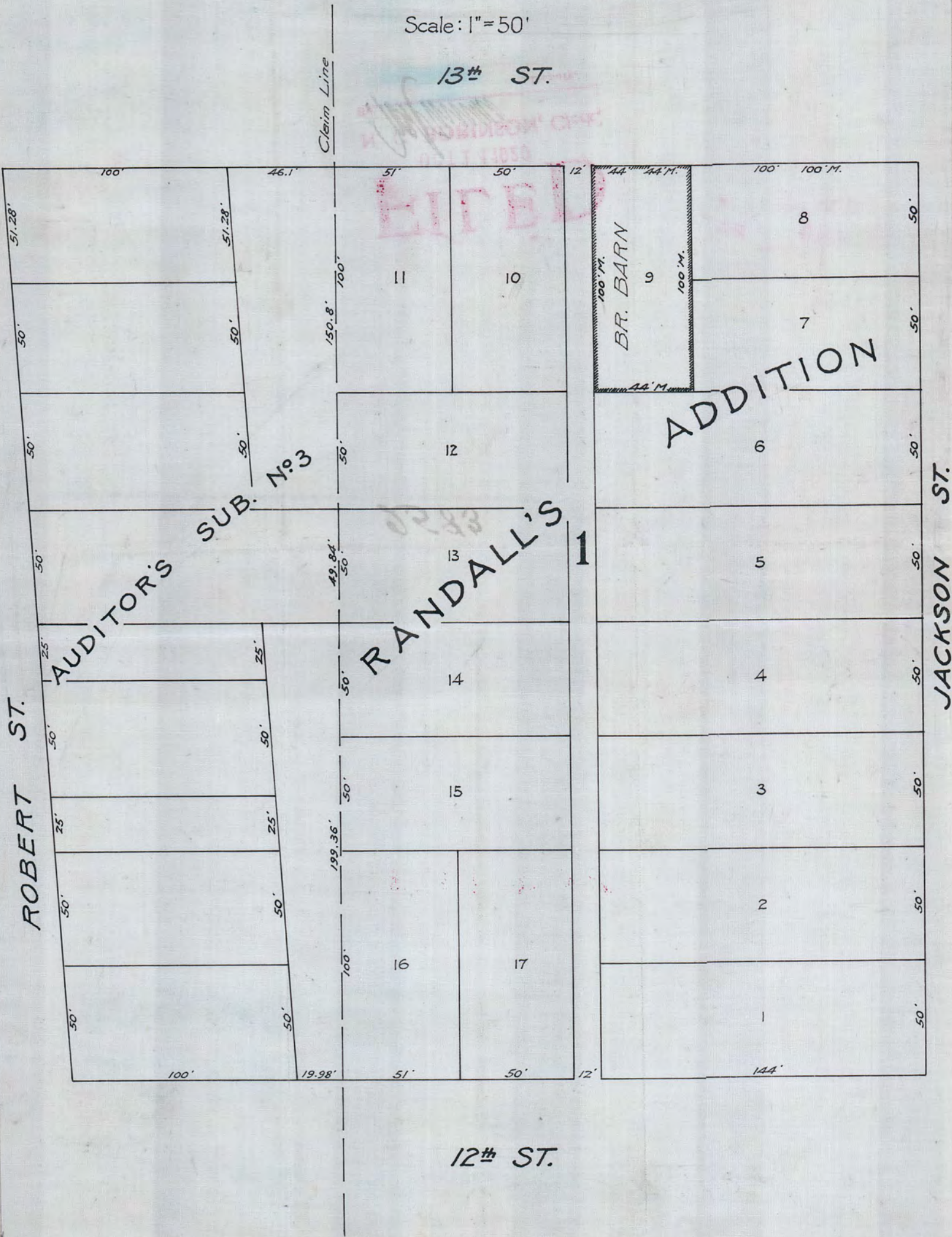


2583

SURVEY OF LOT 9, BLOCK 1, RANDALL'S ADDITION

R.R. GODFREY, SURVEYOR OCT. 2, 1920

Scale: 1" = 50'



Scale: 1" = 50'

STATE OF MINNESOTA)
COUNTY OF RAMSEY) SS

I, R.R. Godfrey, Surveyor in Ramsey County for the fifteen years last past, do hereby certify to having surveyed the property herein described and that the attached is a true and correct plat of same with the improvements as hereon shown.

Robert R. Godfrey

Sworn to and subscribed before me this 14 day of October 1920

Charles Murray
Notary Public, Ramsey County, Minnesota.
My commission expires June 13 1925

2583