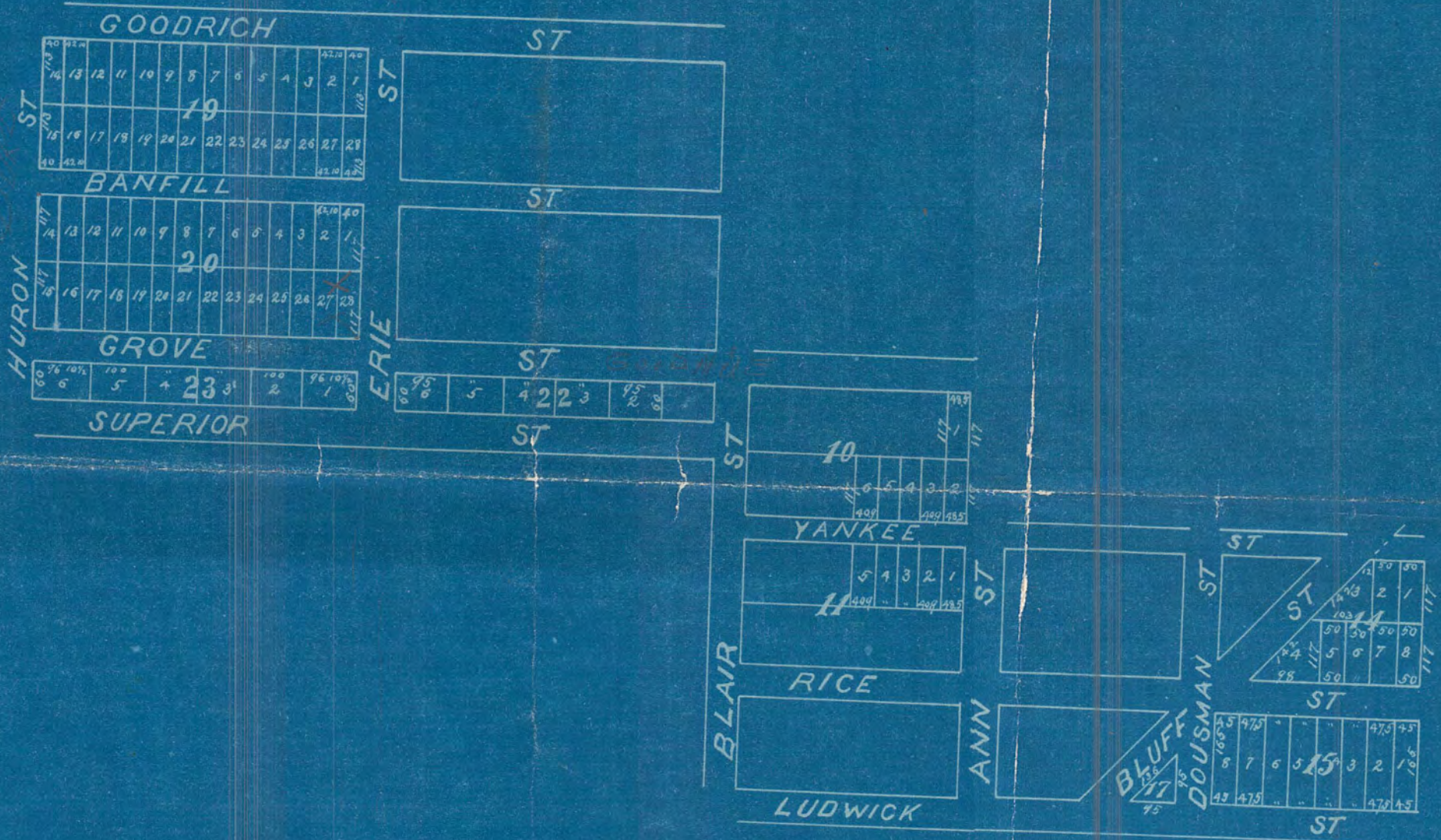


# E.W. Hawke's Sub.

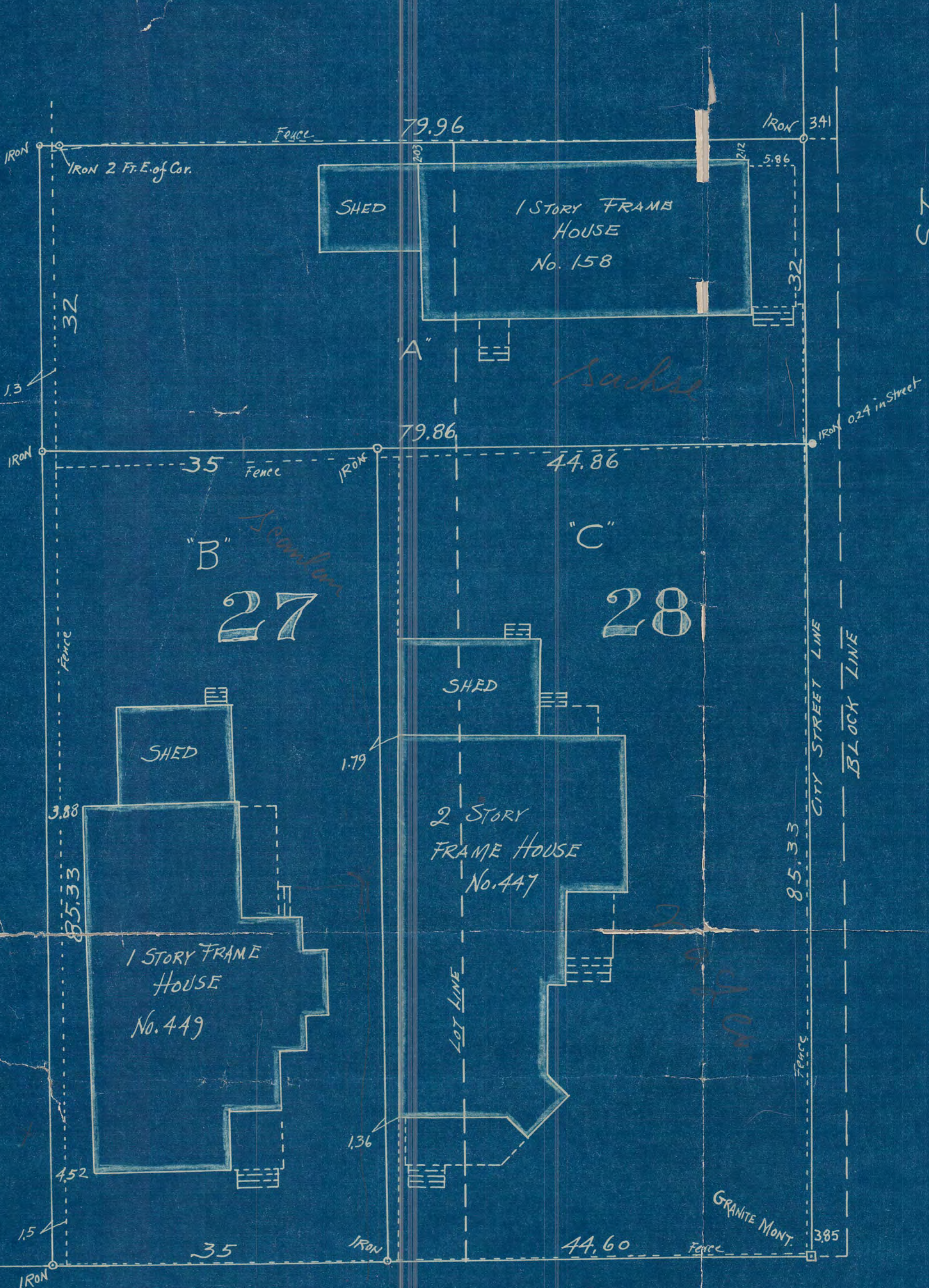
OF WINSLOW'S ADD.

300 FT. 1 INCH

FOWBLE & FITZ,  
LAND SURVEYORS,  
ROOM 67 UNION BLOCK  
ST. PAUL, MINN.  
PLAT PUBLISHERS



1947 J.J. Allen  
 447-449 Goodhue  
 158 Richmond



**DESCRIPTION**  
 "A" is the North 32 ft. of Lots 27 & 28 BLK. 20 of E.W. HAWKES SUB. of Winslow's Add.  
 "B" is the West 35 ft. of all of Lot 27 aforesaid except the North 32 ft. thereof  
 "C" is all of Lots 27 & 28 aforesaid except the two tracts "A" & "B" as described above.

SCALE, 10 FT. Per Inch.

SURVEYED FOR  
 THE NETHERLANDS AM. LAND CO.  
 (No. 1947 E.M.)

GOODHUE

ST.

St. Paul, Sept. 28, 1898.

We certify this diagram correctly represents Lots 27 & 28 BLK. 20, E.W. Hawk's Sub. of Winslow's Add. as surveyed by us Sept. 28, 1898. in accordance with the records of the office of the City Engineer of City of St. Paul.

*Joubert & Fitz*  
 CIVIL ENGINEERS AND SURVEYORS,  
 Rm. 34 Union Blk.  
 ST. PAUL.