

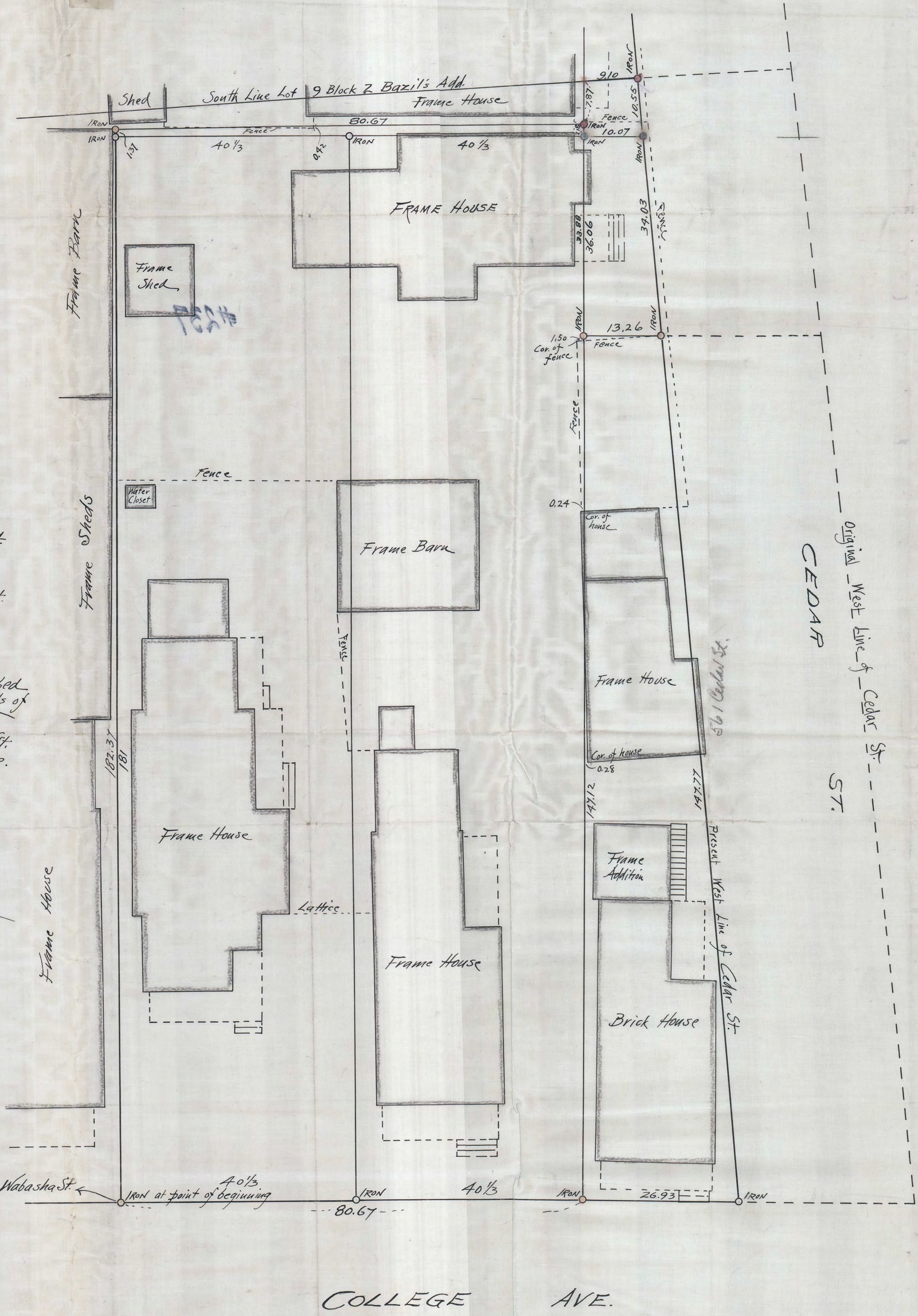
Handwritten notes in the upper left corner, partially obscured and difficult to read.

A portion of the SW 1/4 of Sec. 31, T. 29 N., R. 22 W. described as follows:
Beginning at an iron monument on the N. line of College Ave., 160 1/3 ft. Ely from the NEly cor. of Wabasha St. and College Ave., thence NWly and parallel with the Ely line of Wabasha St. 182.37 ft. to an iron monument, thence NEly 80.67 ft. to an iron monument distant 183.18 ft. NWly at right angles from the Nly line of College Ave., thence NWly and parallel with the E. line of Wabasha St. 7.87 ft. to the S. line of Lot 9 Blk. 2, Bazil's Add. to St. Paul, thence NEly on S. line of said Lot 9 9.10 ft. to an iron monument on the present Wly line of Cedar St., thence SEly on said line of Cedar St. 44.68 ft. to an iron monument on the Nly line of the one half acre tract described in Book M of deeds page 233 of the deed records of Ramsey Co., Minn., thence Wly on Nly line of said tract 13.26 ft. to an iron monument, thence SEly and parallel with the Ely line of Wabasha St. 147.12 ft. to an iron monument on the Nly line of College Ave., thence SWly on the Nly line of College Ave. 80.67 ft. to the place of beginning.

SURVEYED for L.M. & H.F. WARE
Sept. & Oct. 1904.

Froble & Fitz.
St. Paul,
Minn.

Scale: 10 ft. per Inch.



160 1/3 ft. to Ely line of Wabasha St. ← Iron at point of beginning

COLLEGE AVE.

Original West Line of Cedar St.
CEDAR ST.