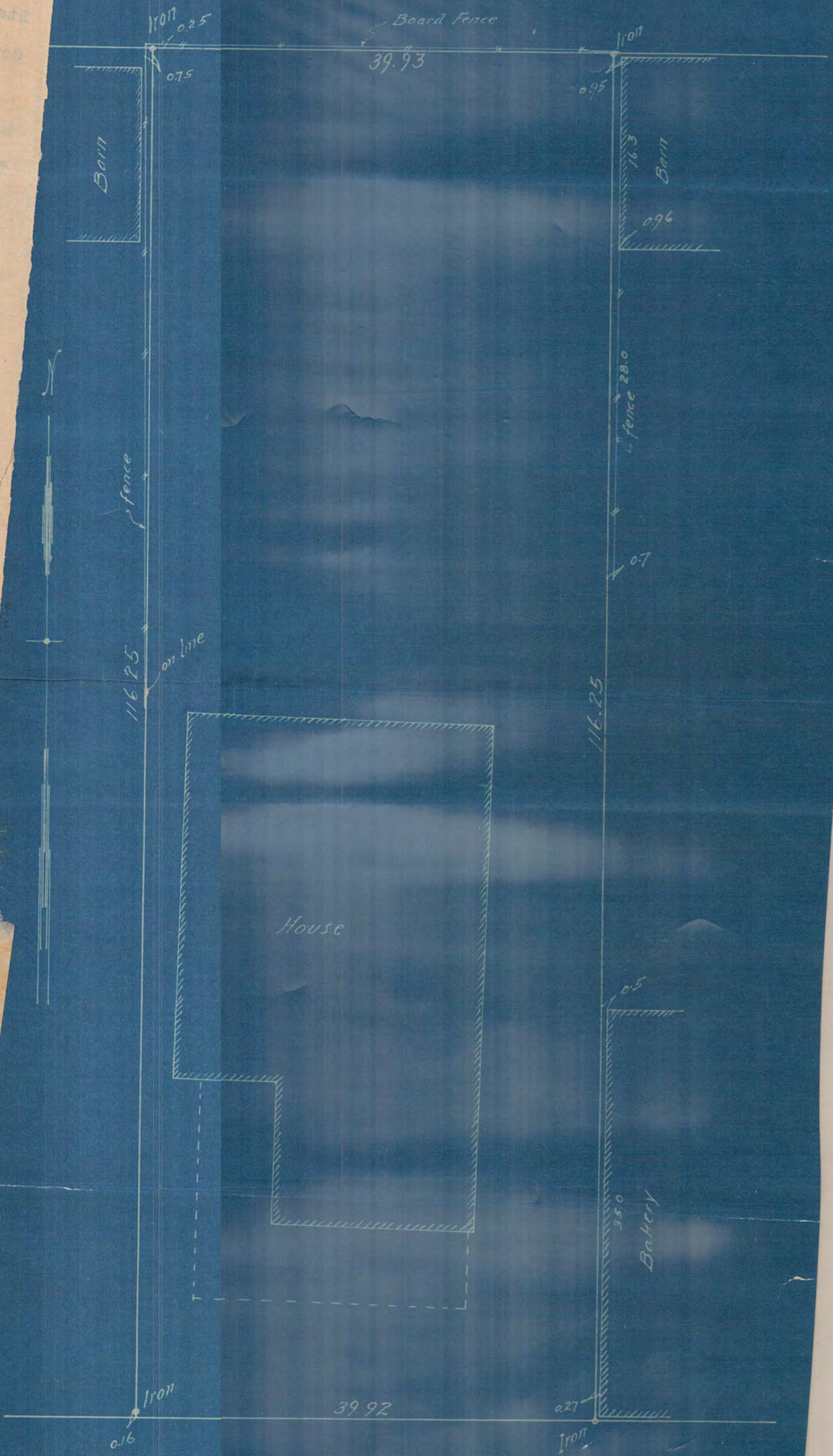


SURVEY OF LOT 24 BLOCK 2

May 1918

Scale 10 ft. per inch

F. J. Arneson
Civil Eng.



SELBY AVE.

SURVEY OF LOT 24 BLOCK 2
May 1918 Scale 10 ft. per inch 411

State of Minnesota
County of Ramsey ss.

Frank J. Armstrong being duly sworn says that he is a civil engineer and engaged in the practice of his profession at St. Paul, Minnesota; that in the month of May 1918 he surveyed Lot twenty four (24) Block two (2), Kern's Addition to St. Paul, according to the plat thereof of record in the office of the Register of Deeds of Ramsey County, Minnesota; that the diagram of the survey is correctly shown on the annexed blue print which correctly represents the lines of said lot and the dimensions thereof and the location of all fences and structures on and abutting the same; that the figures shown thereon indicate distances in feet and decimals; that the irons marked thereon are set in the ground and correspond to the true corners of said lot.

Frank J. Armstrong

Subscribed and sworn to before me this
10th day of June 1918.

Walter L. Chapin
Notary Public, Ramsey County, Minn.,

2263

