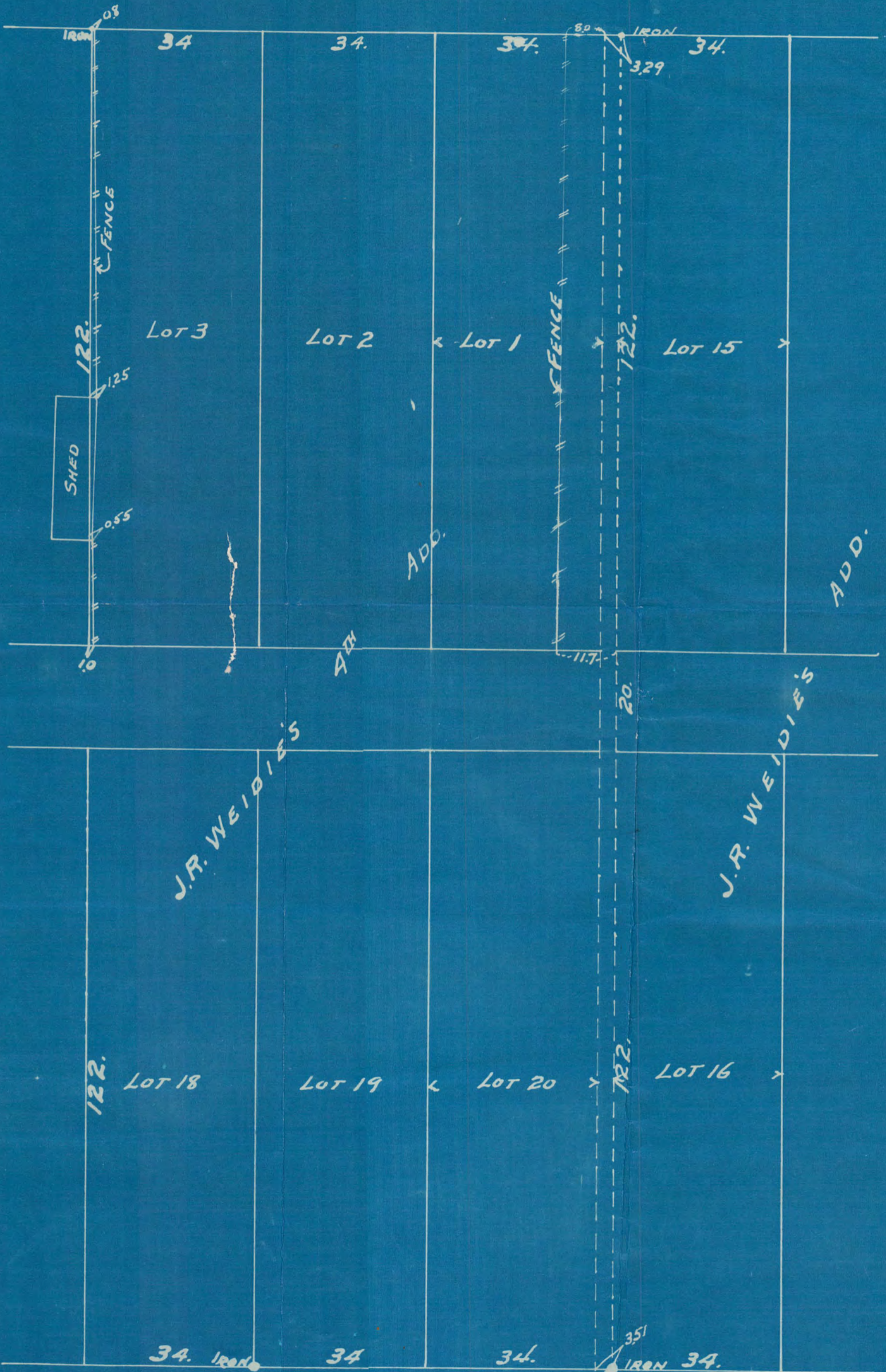


SURVEY OF LOTS 1, 2, 3, 19 & 20 BLK. 1 J.R. WEIDIE'S
 FOURTH ADD.
 AND STRIP OF LAND LYING EAST & ADJOINING LOTS 1 & 20

JUNE 14TH 1919

C.F. SCHEUNEMANN
 SURVEYOR

ROSE ST.



GERANIUM ST.

2260