

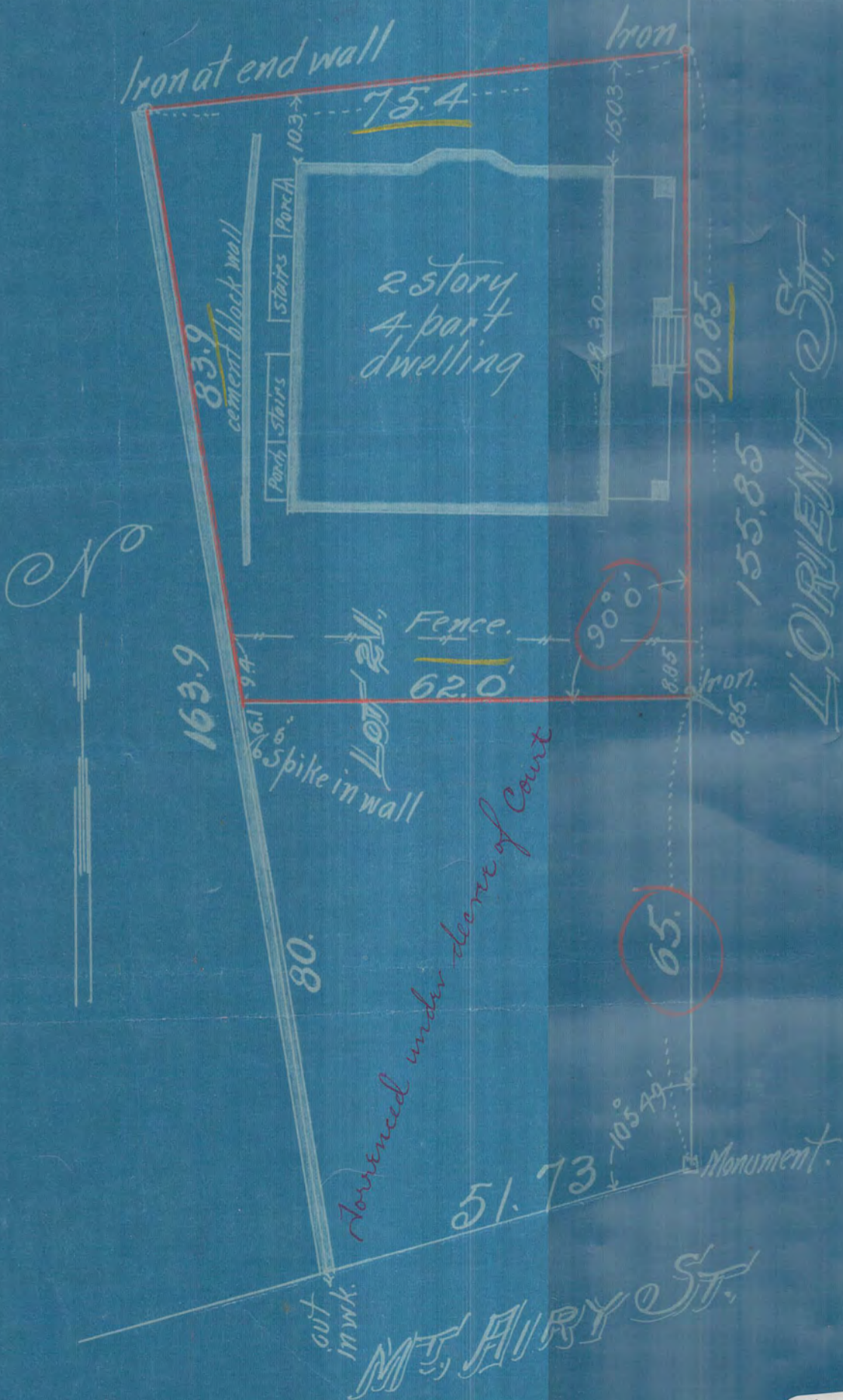
That part of Lot 21 Block 17  
 ASHTON & SHERBURN'S ADD.  
 lying north of a line 65 ft. north of  
 the southeast corner of said lot and  
 at right angles to the east line of said lot.

JOHN B. IRVINE, SURVEYOR.

ST. PAUL, MINN.

Dec. 13, 1917.

Scale 20 ft. per inch.



# 2215