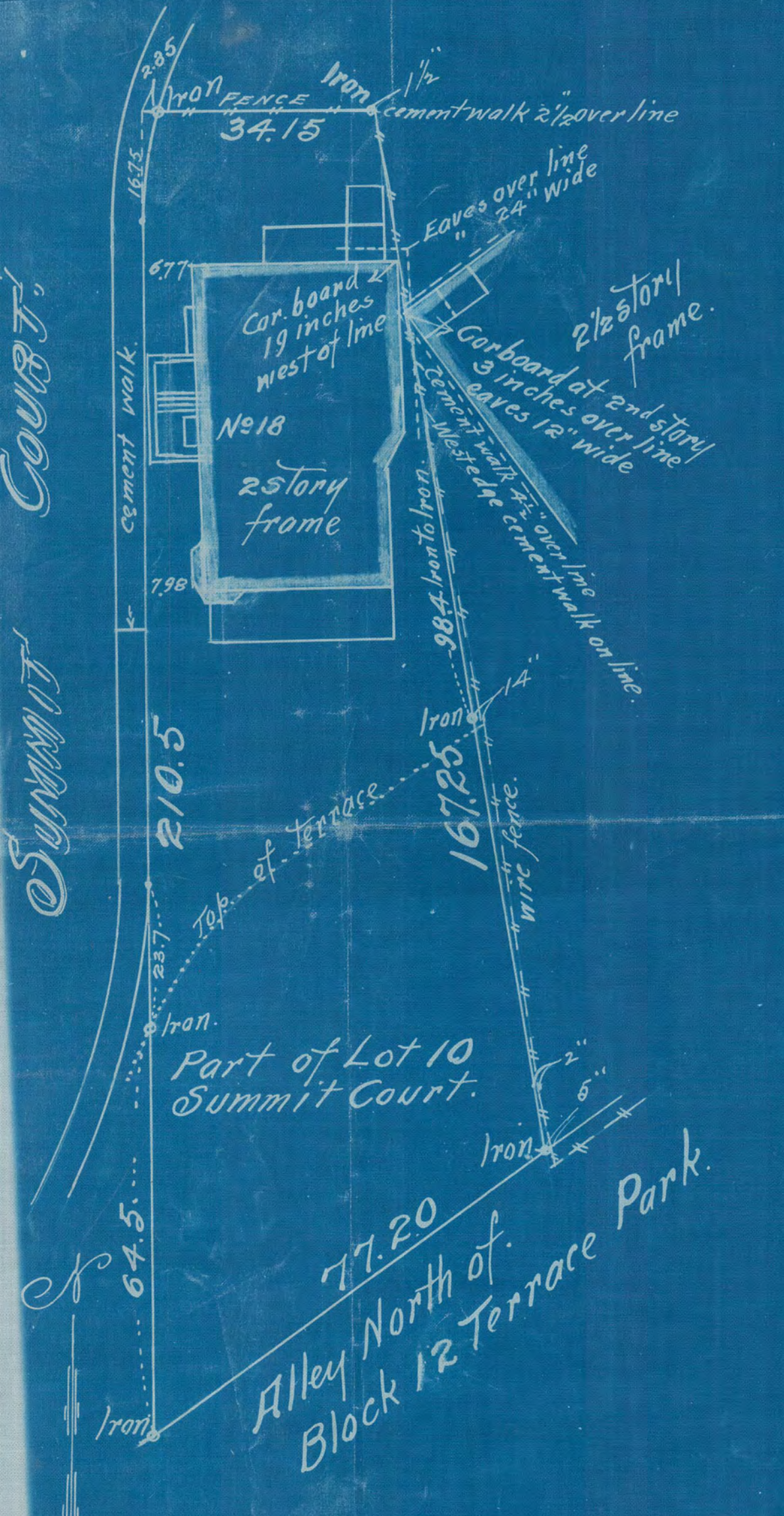
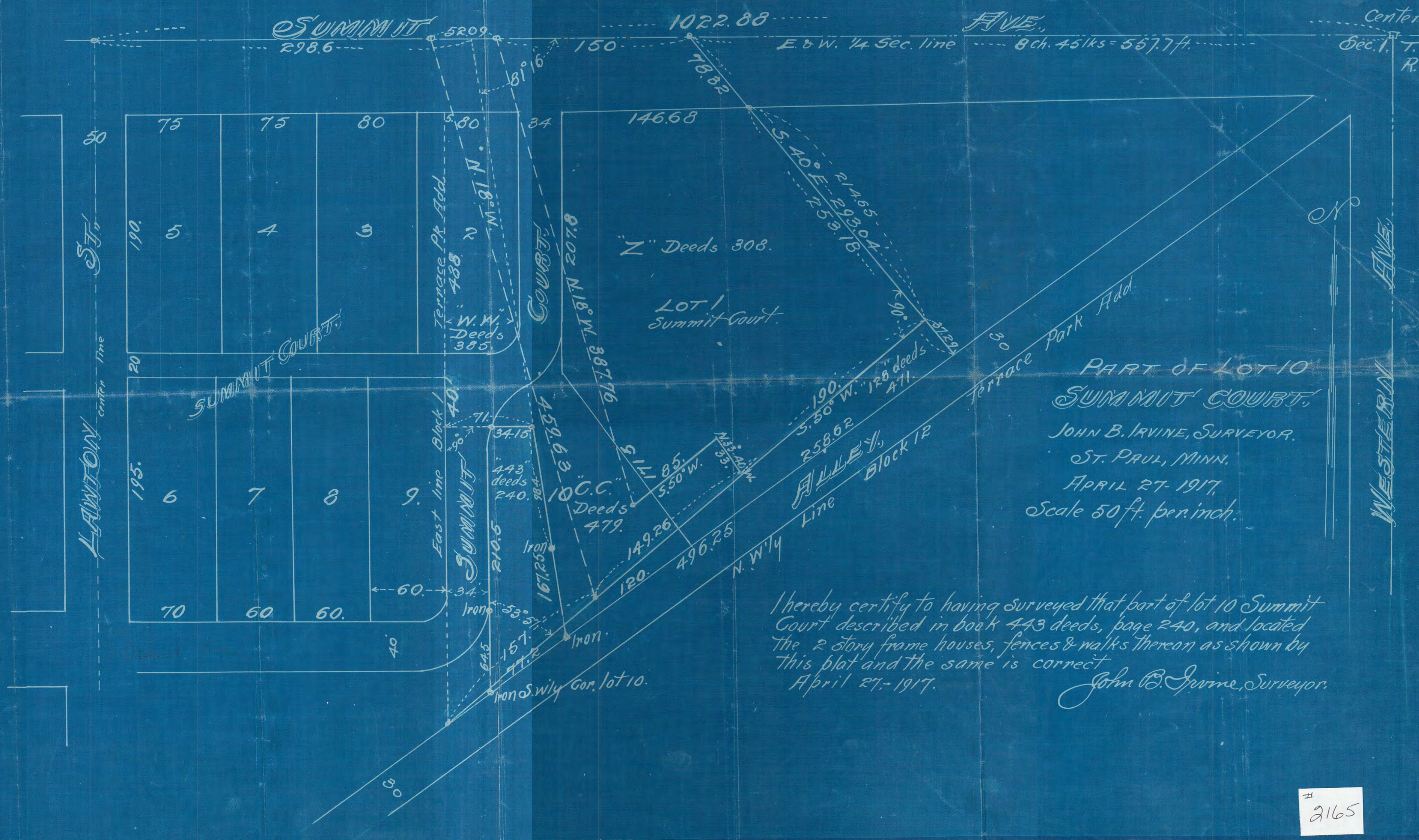


COURT,
SUMMIT



Scale, 20ft. per inch.



PART OF LOT 10
 SUMMIT COURT,
 JOHN B. IRVINE, SURVEYOR,
 ST. PAUL, MINN.
 APRIL 27, 1917,
 Scale 50 ft. per inch.

I hereby certify to having surveyed that part of lot 10 Summit Court described in book 443 deeds, page 240, and located the 2 story frame houses, fences & walks thereon as shown by this plat and the same is correct
 April 27, 1917.
 John B. Irvine, Surveyor.