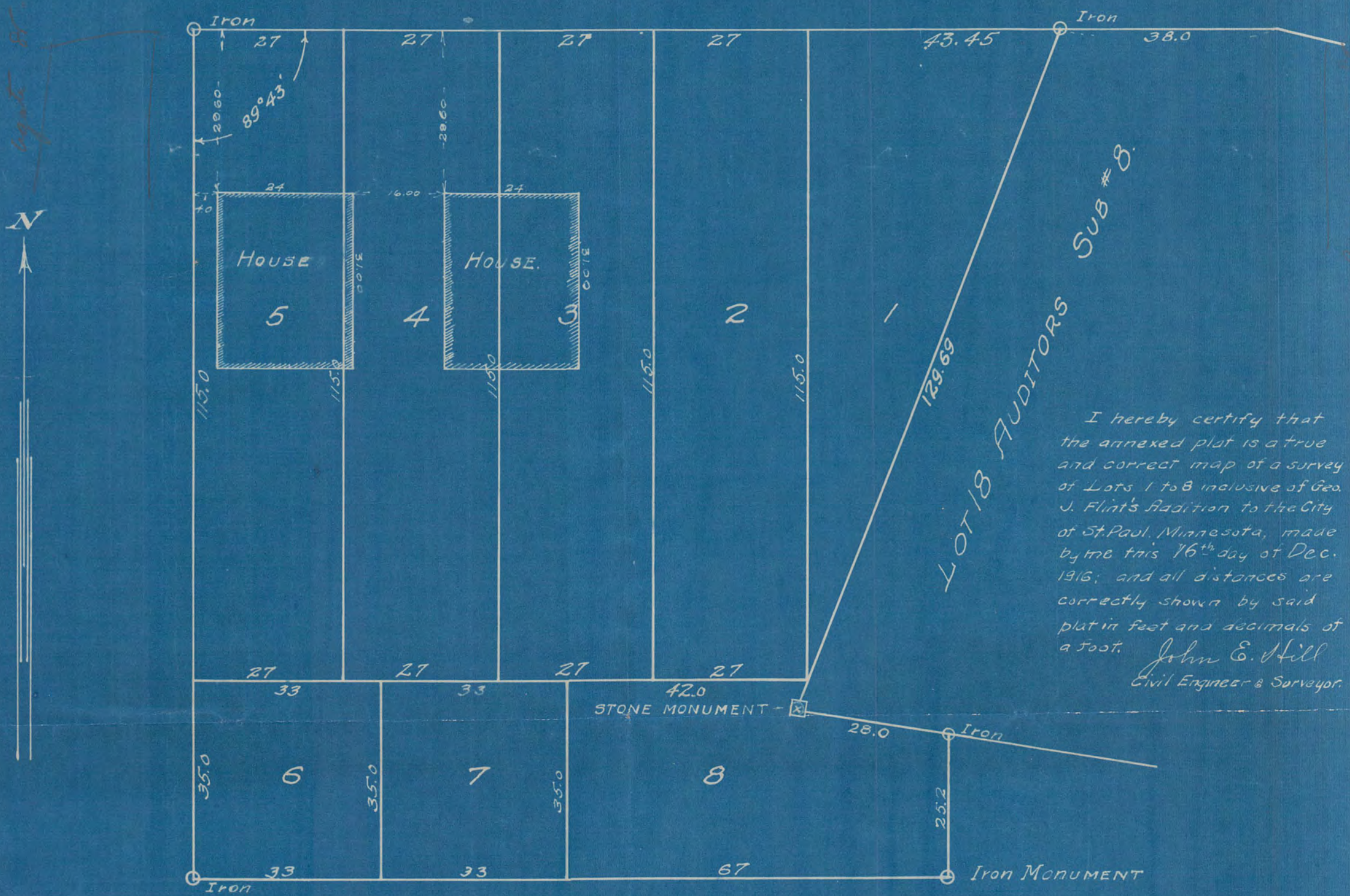


**PLAT FOR
REGISTRATION OF TITLE**
 LOTS 1 TO 8 OF GEO. J. FLINT'S ADDITION TO THE CITY OF ST. PAUL.
 SCALE: 20' = 1"

CAYUGA

ST.



LOT 18 AUDITORS SUB # 8.

I hereby certify that the annexed plat is a true and correct map of a survey of Lots 1 to 8 inclusive of Geo. J. Flint's Addition to the City of St. Paul, Minnesota, made by me this 16th day of Dec. 1916; and all distances are correctly shown by said plat in feet and decimals of a foot.
 John E. Hill
 Civil Engineer & Surveyor.

2071

Geo. J. Flint

Geo. J. Flint's Plat

E-2