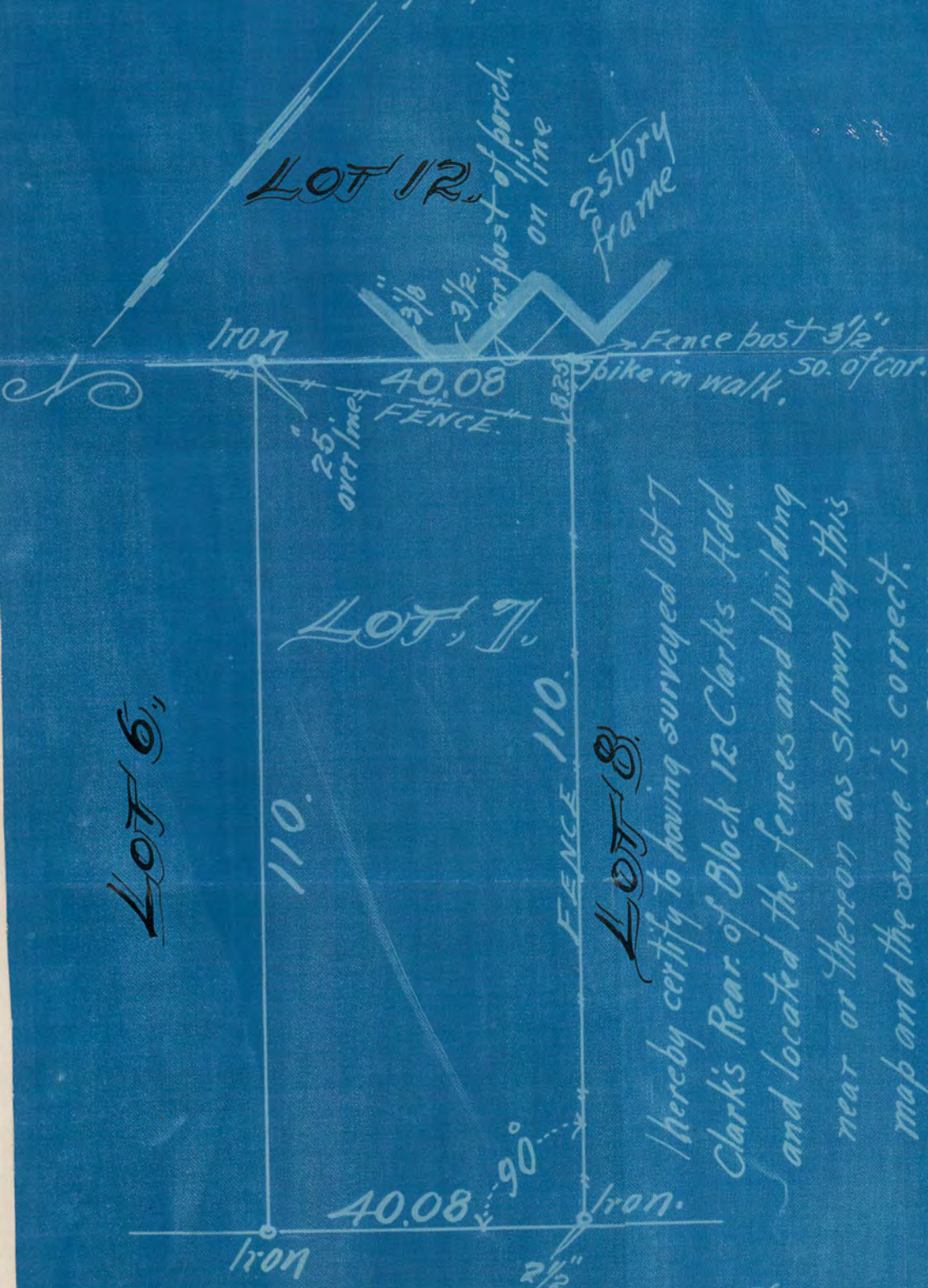


2001

LOT 7  
CLARK'S REAR,  
BLOCK 12,  
CLARK'S ADD.

JOHN B. IRVINE, SURVEYOR.  
408 GLOBE BLDG.  
ST. PAUL, MINN.  
JULY 17-1916.  
Scale 20 ft. per. inch.



LOT 12.

25' over line

40.08 FENCE

3/8

3/2

compost of birch on line

2 story frame

Iron

Fence post 3/2"

Spike in walk. 50. of cot.

LOT 7.

110.

FENCE 110.

LOT 8.

40.08

90°

Iron

2 1/2"

Iron

hereby certify to having surveyed lot 7  
Clark's Rear. of Block 12 Clark's Add.  
and located the fences and building  
near or thereon as shown by this  
map and the same is correct.  
July 17-1916 John B. Irvine, Surveyor.

W. SEVENTH ST.

# 2001