

filed
Lot 4
RE-ARRANGEMENT
OF PART OF BLOCK 62.
IRVINE'S ENLARGEMENT OF
RICE & IRVINE'S ADD.

JOHN B. IRVINE, SURVEYOR.

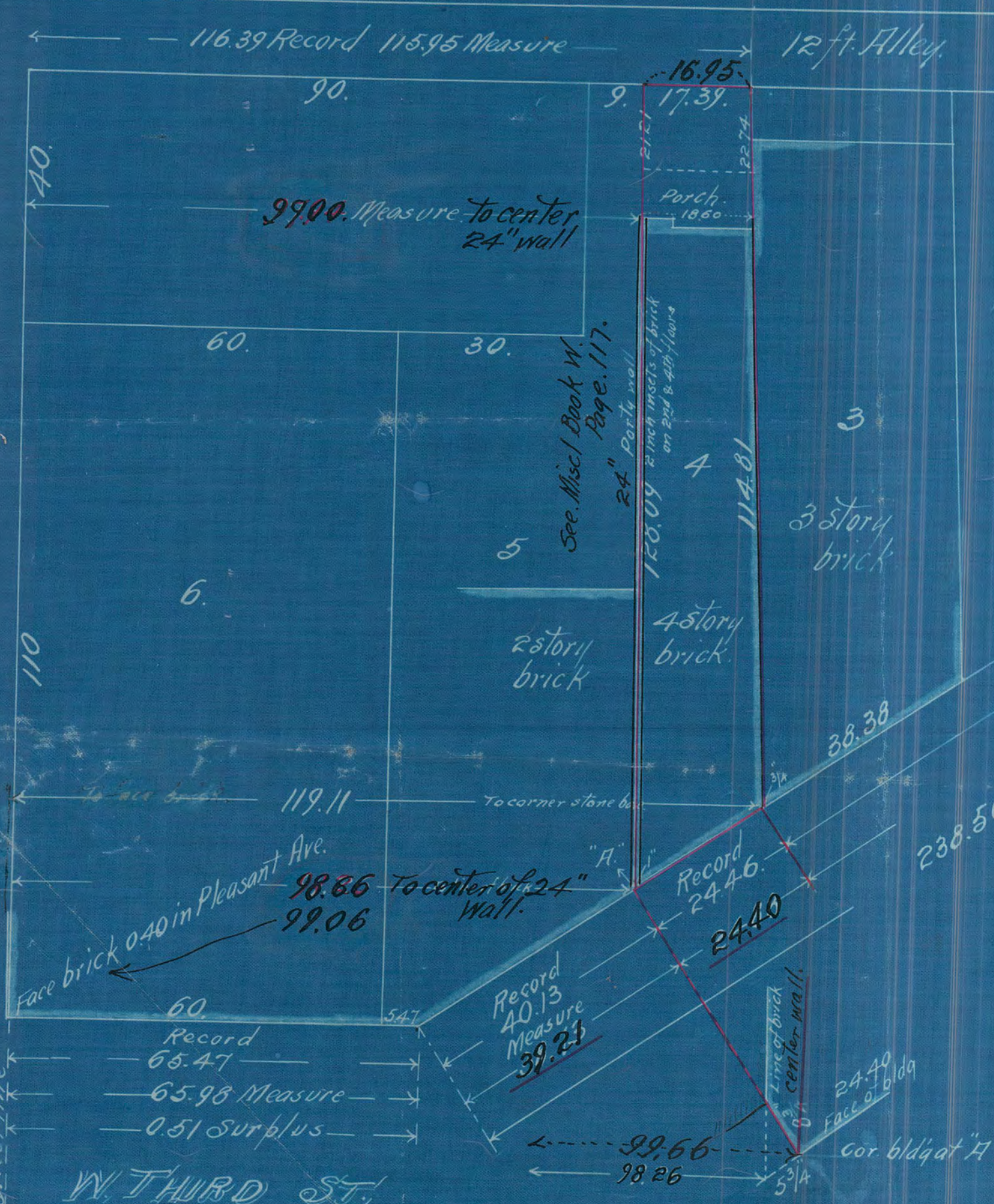
ST. PAUL, MINN.

Scale 20 ft. per inch.

MARCH 27-1916.

PLEASANT AVE.

HURONS AVE.



102.10
 173.97 Records
 173.36 Measure
 236.97 Measure
 1.69 shortage
 W. FIFTH ST.

I hereby certify to having surveyed lot 4
 Re-arrangement of part of Block 62.
 Irvine's Enlargement of Rice & Irvine's Add.
 thereon as shown by this map and the
 same is correct.
 March 27-1916. John B. Irvine Surveyor.