

1953

ABSTRACT OF TITLE

MADE BY OFFICIAL OFFICE OF RAMSEY COUNTY

No. 1

TO

Lot 5, Auditor's Subdivision No. 12, St. Paul, Minn.

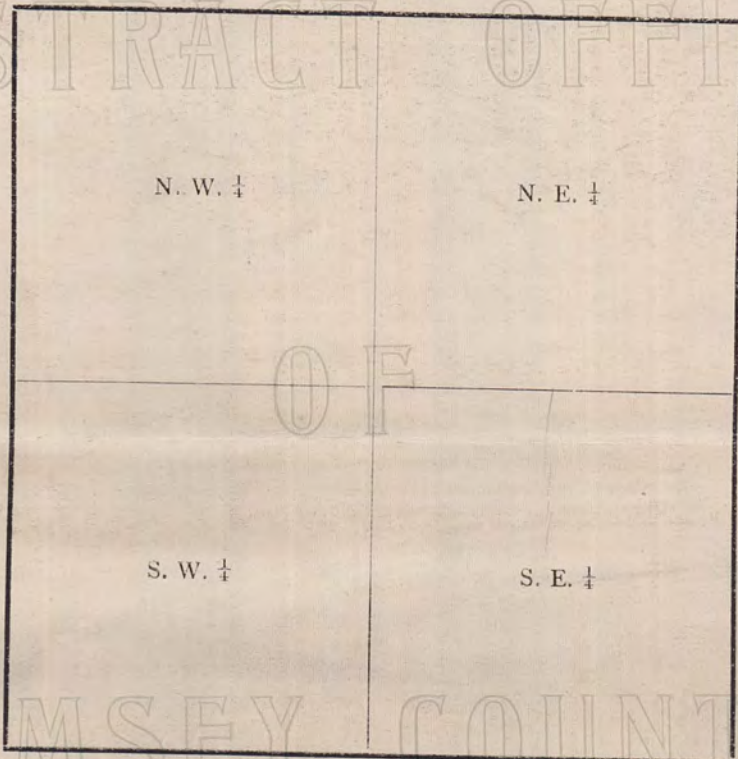
OFFICIAL

Premises described in caption are located in the NE $\frac{1}{4}$ of SE $\frac{1}{4}$

of Section Number 31 Township Number 29 North of

Range Number 22 West of the Fourth Principal Meridian.

SECTION



No. 2

Old Time Surveyors Measure

- $7\frac{92}{100}$ inches make 1 Link.
- 100 Links, or 66 feet, 1 Chain.
- 3 feet, 1 Yard.
- $5\frac{1}{2}$ yds. or $16\frac{1}{2}$ ft., 1 Rod or Pole.
- 4 Rods, 1 Chain.
- 80 Chains (5280 feet) 1 Mile.

RAMSEY COUNTY

No. 3

For Plat See next page.

MINNESOTA

E-561/1953

1953

Canada

St.

Koppersberg's Epps.

10.

9

8.

7

6

McCoy's Epps.

1

2

3

4

5

Line held by Possessor

Line held by Possessor

McCoy's Sub'd.

Broadway

1953

#1953

1953

1546

MAP OF SUB. NO. 12.

SURVEY OF
LOT NO. 5.
SCALE 1" = 10'-0"

JAN. 8, 1916.

JENS PEDERSEN
SURV.

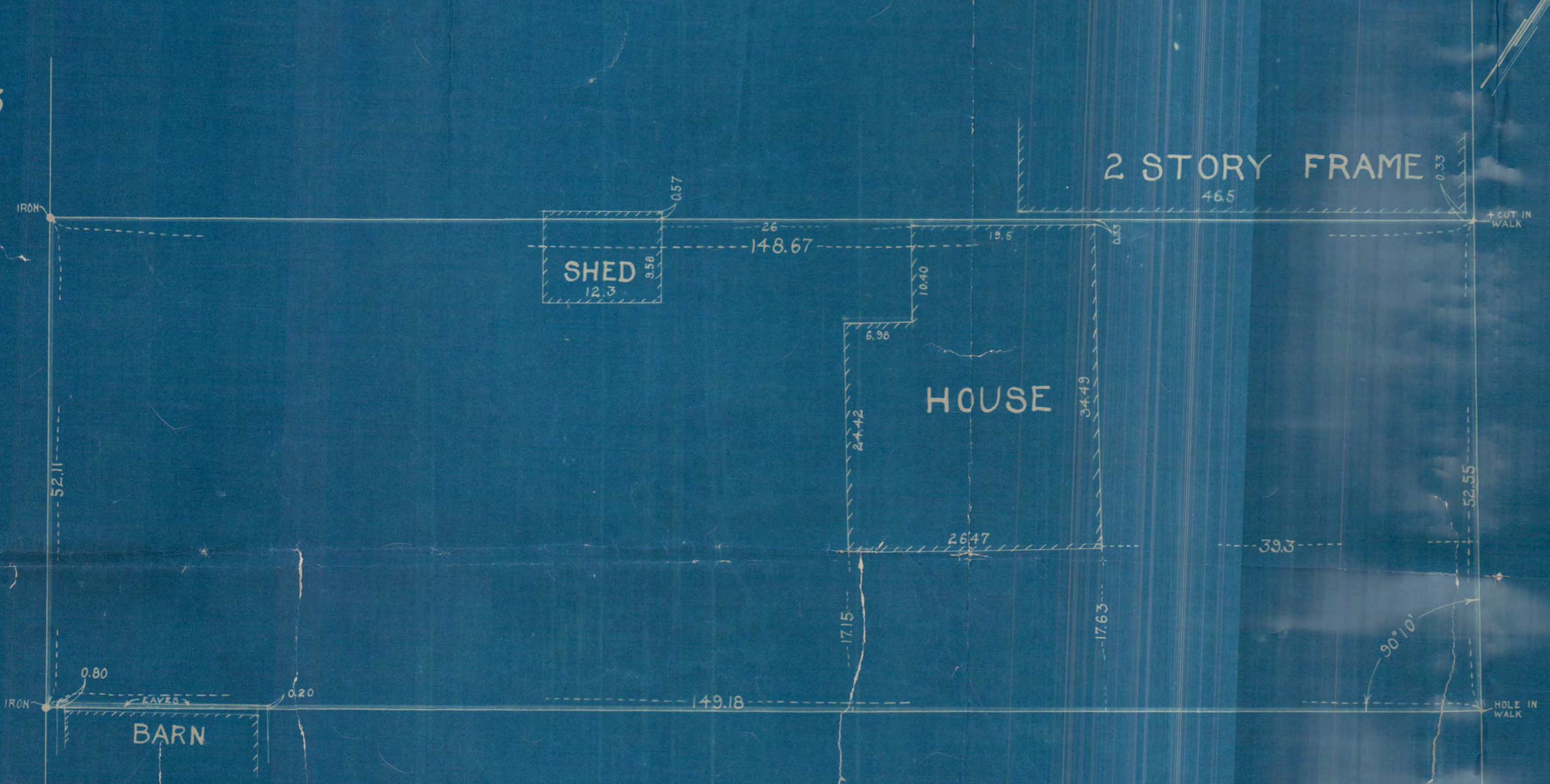


13

ALLEY

ST.

BROADWAY



1953