

1872

N'LY 21ft. LOT 5 & S'LY 26ft. LOT 6  
RE-AR. BLOCK 66.

IRVINE'S ENLARGEMENT OF  
RICE & IRVINE'S ADD.

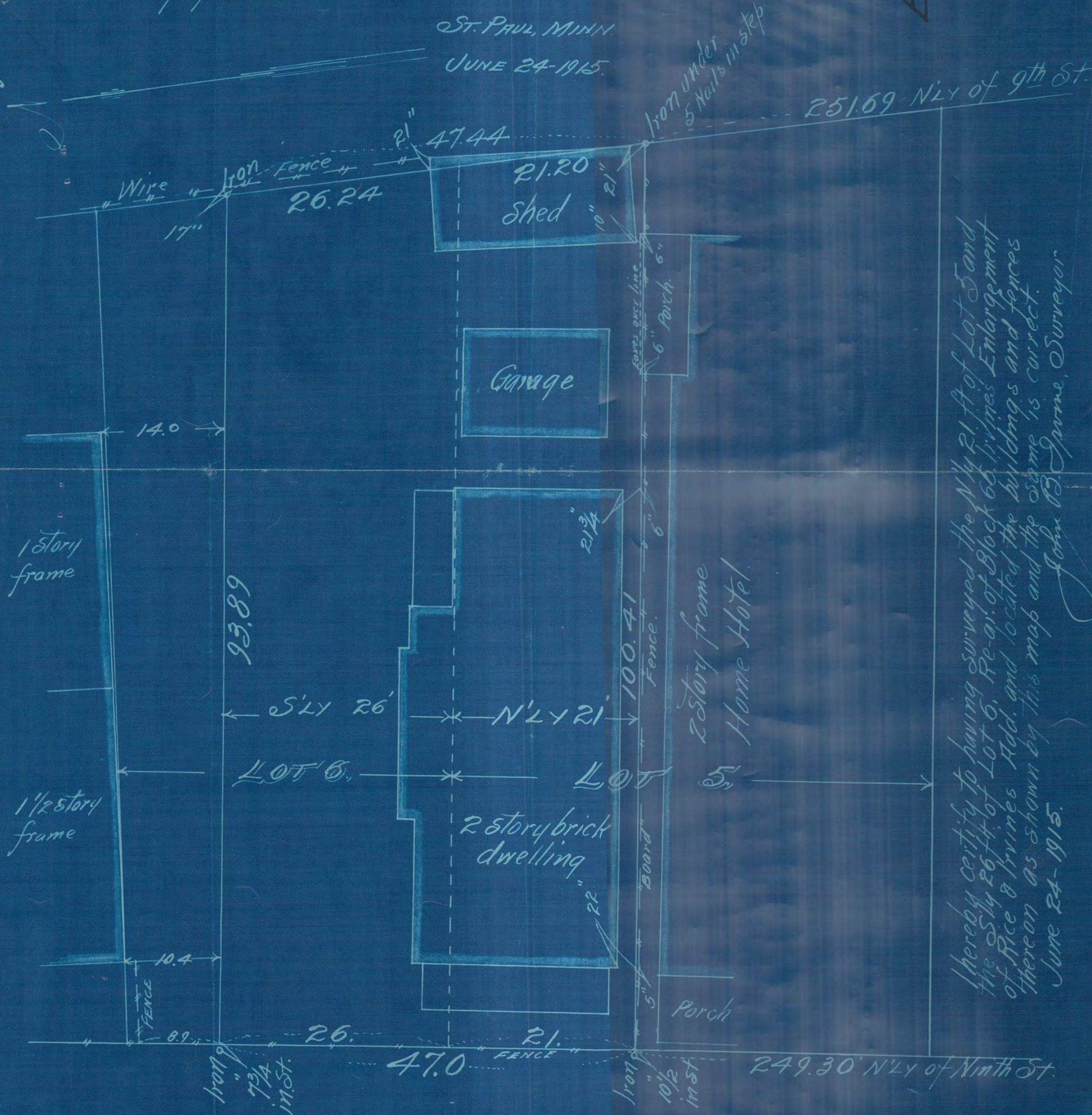
Scale 10ft. per inch.

JOHN B. IRVINE, SURVEYOR.

ST. PAUL, MINN.

JUNE 24-1915.

Exhibit "A"



Whereby certify to having surveyed the N'LY 21 ft of Lot 5 and the S'LY 26 ft of Lot 6, Re-ar. of Block 66, Irvine's Enlargement of Rice & Irvine's Add. and located the buildings and fences thereon as shown by this map and the same is correct.

John B. Irvine, Surveyor  
June 24-1915.