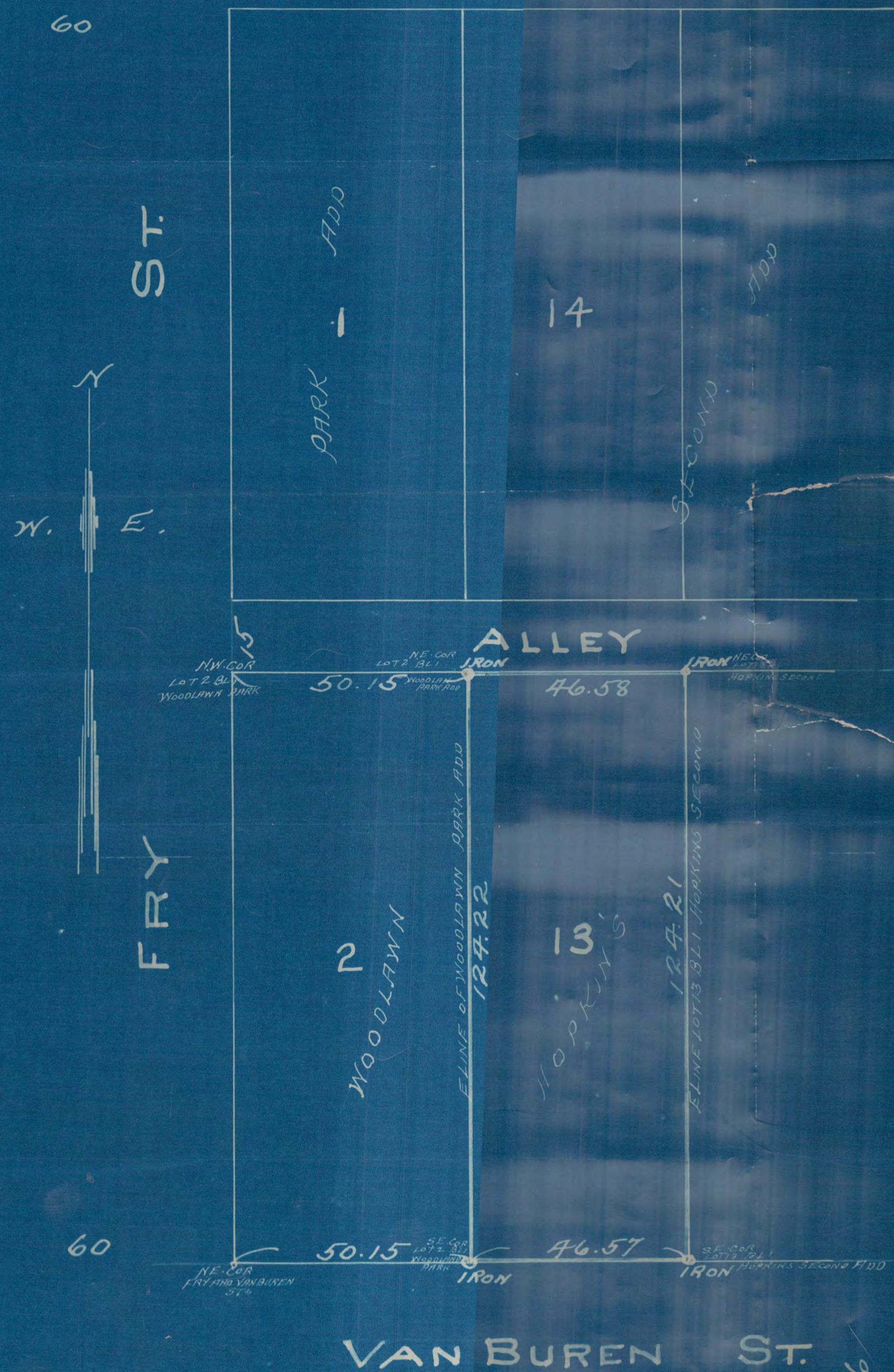


SURVEY OF

BEGINNING AT A POINT ON THE NORTH LINE OF VAN BUREN ST IN THE CITY OF ST PAUL 50 ¹⁵/₁₀₀ FT EAST FROM THE NORTH EAST CORNER OF THE INTERSECTION OF VAN BUREN AND FRY STS IN SAID CITY THENCE EAST ALONG THE NORTH LINE OF VAN BUREN ST 46 ⁵⁷/₁₀₀ FT TO THE SOUTHEAST CORNER OF LOT 13 BLOCK 1 HOPKINS SECOND ADD TO ST PAUL THENCE NORTH ALONG THE EAST LINE OF SAID LOT 13 124 ²¹/₁₀₀ FT TO THE SOUTH LINE OF THE ALLEY RUNNING THROUGH BL 1 WOODLAWN PARK ADD AND BLOCK 1 OF SAID HOPKINS SECOND ADD THENCE WEST ALONG THE SOUTH LINE OF SAID ALLEY TO A POINT ^{THEREIN IS} 50 ¹⁵/₁₀₀ FT EAST FROM THE NORTHWEST CORNER OF LOT 2, BL 1 OF SAID WOODLAWN PARK ADD TO ST PAUL THENCE SOUTH ON A LINE PARALLEL WITH THE E. LINE FRY ST TO THE POINT OF BEGINNING

APR 8-1915 SCALE 20'-1" JENS PEDERSEN
N. LINE SEC 33 SURV.

MINNEHAHA ST.



VAN BUREN ST.

1859