



Govt. lot 12.

← Equi distant \* Equi distant →

St. Paul, Minn., Nov. 10, 1915.

I, John B. Irvine, a surveyor and civil engineer, do hereby certify that I have surveyed the miscellaneous tract of land described in the application in Registration Court File No. 1813 in the district court of Ramsey County Minnesota and made a diagram of such survey and the same is correctly indicated hereon. That the right of way of the Chicago, Rock Island and Pacific Railroad Company as described in 453 Deeds Page 570, is also correctly shown in said diagram and the easterly line of Hitchcock's Addition and the westerly line of said miscellaneous tract is also correctly shown on said diagram.

*John B. Irvine*  
Surveyor

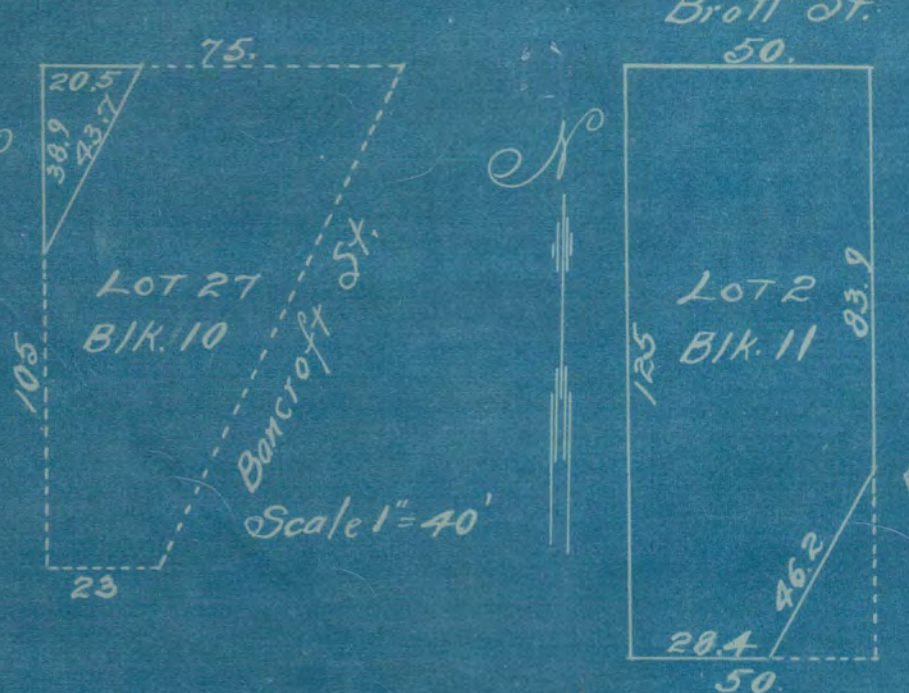
Govt. lot 13.

Sec. 5. T. 28. R. 22.

2710.70

984.82

Sec. 8. T. 28. R. 22.



I have also surveyed lot 2 Block 11 of Hitchcock's Addition and its plat and true dimensions are as follows. The plat dimensions are 50 ft wide east and west and 125 ft long north & south. The true dimensions are as follows, on the west 125 ft, on the north 50 ft, on the east 33.9 ft, on the south 28.4 ft, on the southeast 46.2 ft.

I have also surveyed lot 27 Block 10, Hitchcock's Addition and its plat and true dimensions are as follows. The plat dimensions are 75 ft on the north, 23 ft on the south, 105 ft on the west, 115 ft on the south east. The true dimensions of said lot are as follows on the north 20.5 ft, on the west 38.9 ft, on the southeast 43.7 ft.

The above diagrams of said surveys show the plat and true dimensions.  
Nov. 12-1915.

*John B. Irvine*  
Surveyor

JOHN B. IRVINE, SURVEYOR.  
408 GLOBE BLDG  
ST. PAUL, MINN.  
OCT. 23-1915

Scale 100 ft. per inch.

# 1812