

1804

LOT 30  
MCCLOUD'S SUBD.  
OF BLK. 2.

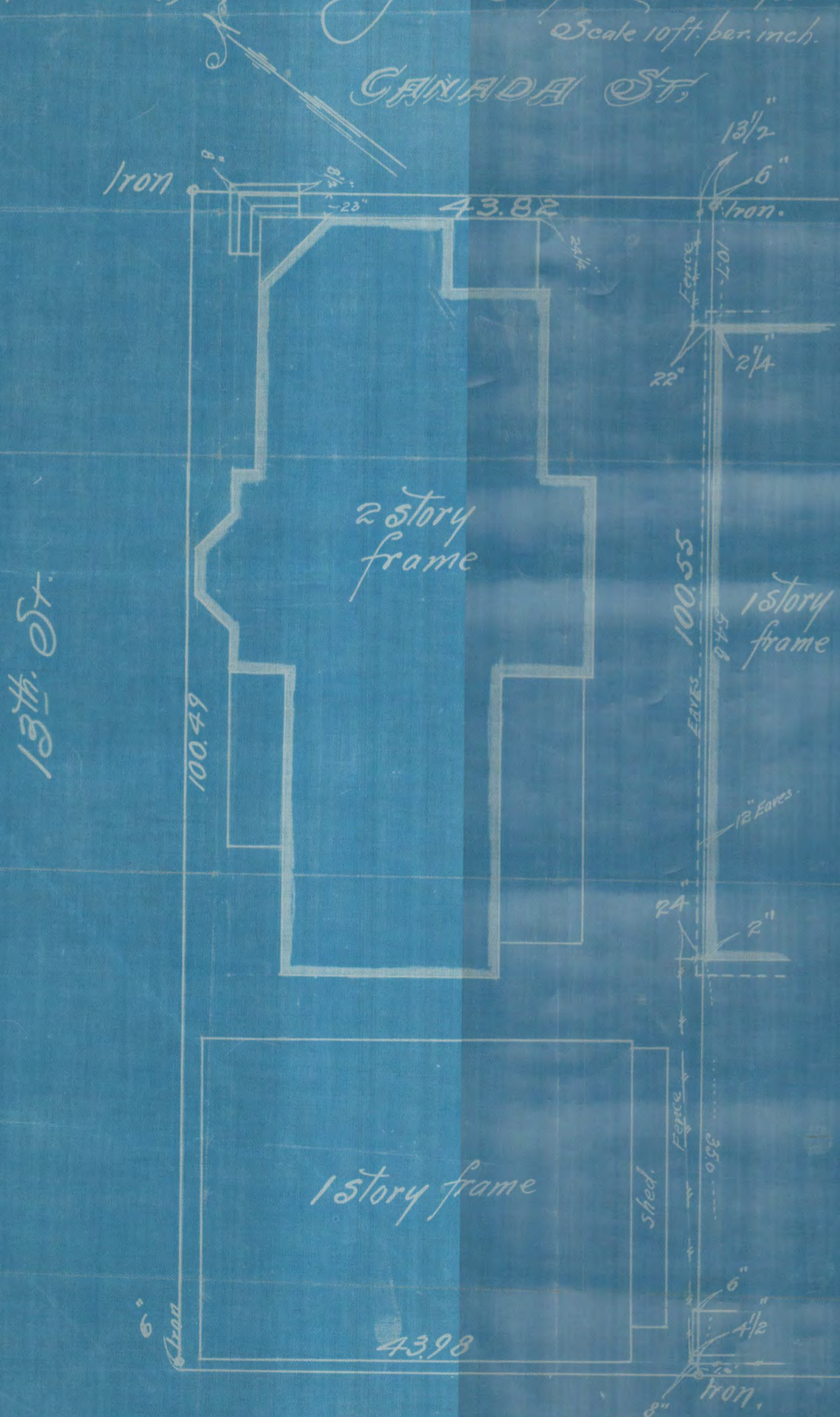
VANDENBURGH'S ADD.

I hereby certify to having surveyed Lot 30 McCLOUD'S Subd. of Block 2 Vandenburg's Add. and located the buildings sheds & fences near or thereon as shown by this plat and the same is correct.

Dec. 12-1916.

John B. Irvine. Surveyor.  
Scale 10ft. per. inch.

CANADA ST.



ALLEY

# 1804