

JOHN NAGLE'S SUBDIVISION

Scale 1" to 20'

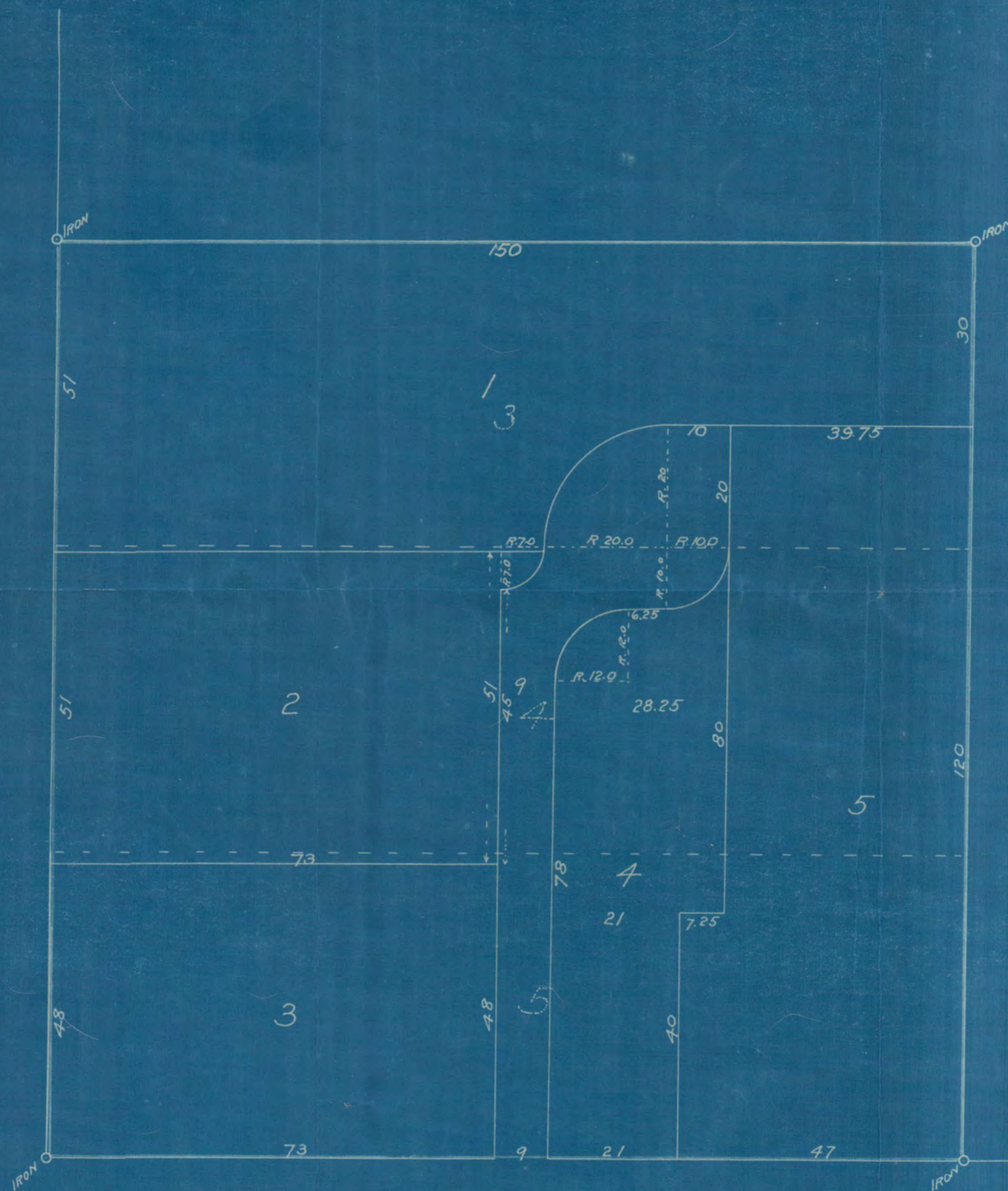
Recorded, July 14th 1910

Jens Pedersen
Surveyor

I hereby certify to having surveyed and platted the property as described on this map as JOHN NAGLE'S SUBDIVISION and have placed iron monuments at the corners thereof, as shown on this map, and the same is correct

sgd. Jens Pedersen
Surveyor

LIVINGSTONE AVE.



DELOS ST.



State of Minnesota }
County of Ramsey } ss

On this 5 day of Mar. 1910 personally appeared before me, the undersigned, Jens Pedersen, to me well known, and acknowledged that he executed the foregoing certificate as his own free act and deed

sgd. A. P. Moore
Notary Public, Ramsey County, Minn.
My commission expires Oct. 28 1912

This is to certify that Catherine Nagle widow proprietor of Lots 3, 4 and 5 of Block 22, West St. Paul Proper, has caused the same to be surveyed and platted and hereafter known as JOHN NAGLE'S SUBDIVISION, as shown on this plat, and hereby dedicates to the public, and for the public use forever, the streets and alleys as hereon indicated.

Witness my hand and seal this 10th day of February 1910

In presence of
Jens Pedersen

sgd. Catherine Nagle (Seal)

Thomas R. Nagle

State of Minnesota }
County of Ramsey } ss

On this 10 day of February 1910 personally came before me, the undersigned, Catherine Nagle, to me well known, and acknowledged that she executed the foregoing certificate as her own free act and deed

Richard A. Walsh
Notary Public, Ramsey County, Minn.
My commission expires July 8th 1914

Accepted and approved this 5th day of March 1910

C. L. Annan } Plat Commissioners
Jas. W. Jordan }
L. W. Rundlett City Engineer

Accepted by the Board of Aldermen

" " " Assembly

Approved

City Clerk