

1797

# ABSTRACT OF TITLE

MADE BY OFFICIAL OFFICE OF RAMSEY COUNTY

No. 1

TO

The West 1/2 of Lot 31, Block 2, J. C. Stout's Addition to Summit Park.

OFFICIAL

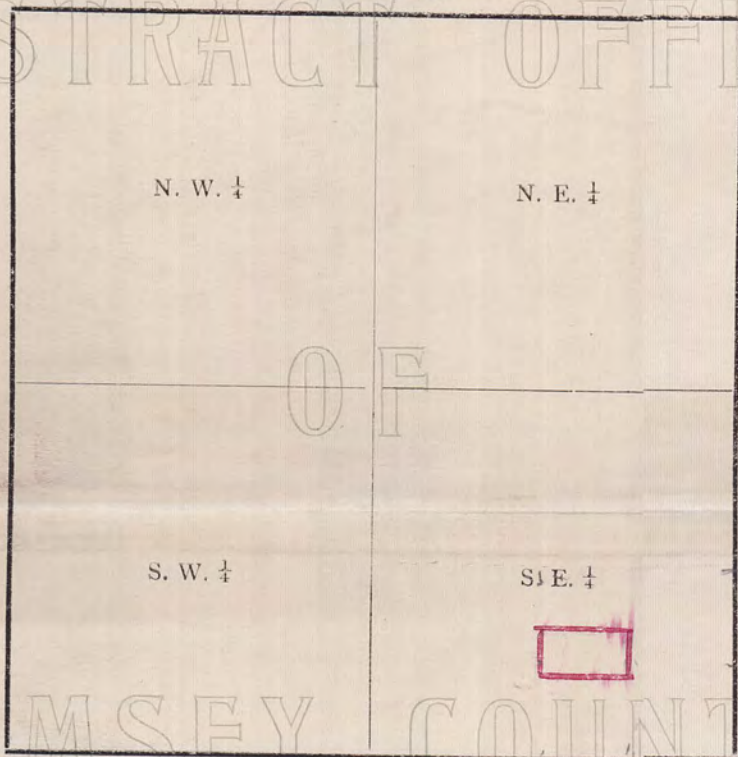
Premises described in caption are located in the East 1/2 of SE 1/4

of Section Number 2 Township Number 28 North of

Range Number 23 West of the Fourth Principal Meridian.

## SECTION

ABSTRACT OFFICE



N



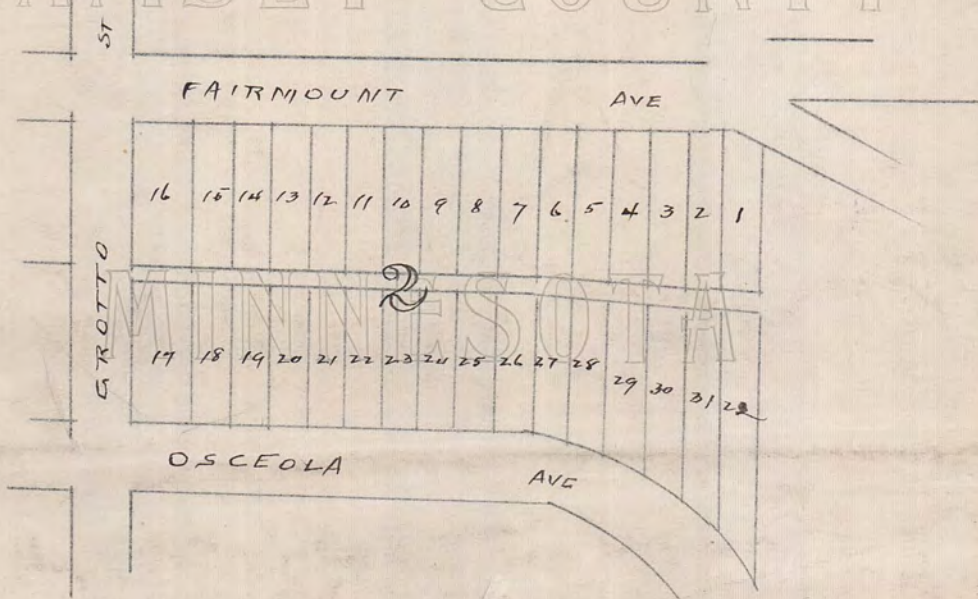
No. 2

Old Time Surveyors Measure

- $7\frac{92}{100}$  inches make 1 Link.
- 100 Links, or 66 feet, 1 Chain.
- 3 feet, 1 Yard.
- $5\frac{1}{2}$  yds. or  $16\frac{1}{2}$  ft., 1 Rod or Pole.
- 4 Rods, 1 Chain.
- 80 Chains (5280 feet) 1 Mile.

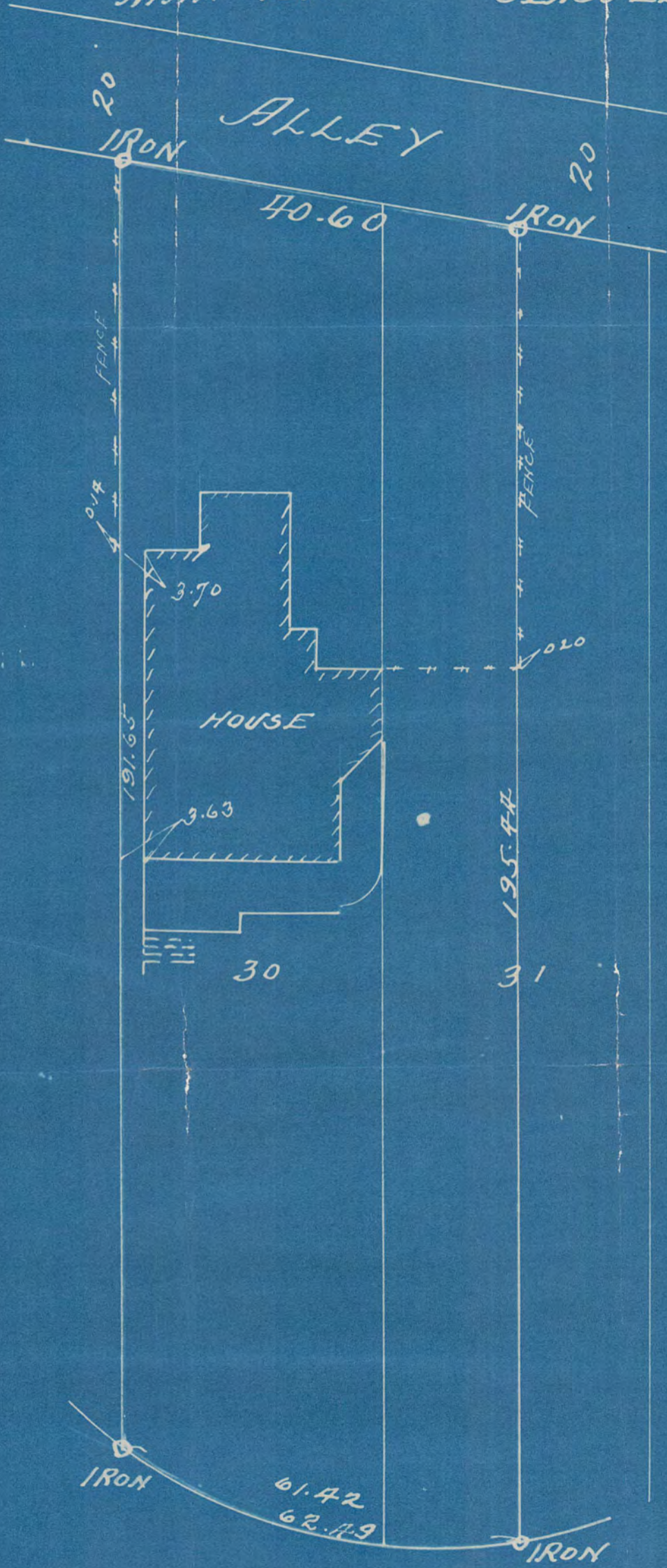
RAMSEY COUNTY

No. 3



# 1797

J. C. STOUTS ADD  
 SURVEY OF  
 LOT 30 AND W/2 LOT 31 B/L 2  
 MAR-1915 JENS PEDERSEN  
 SURV



N.  
 W E  
 SCALE 20' = 1"

OSCEOLA AVE

# 1797