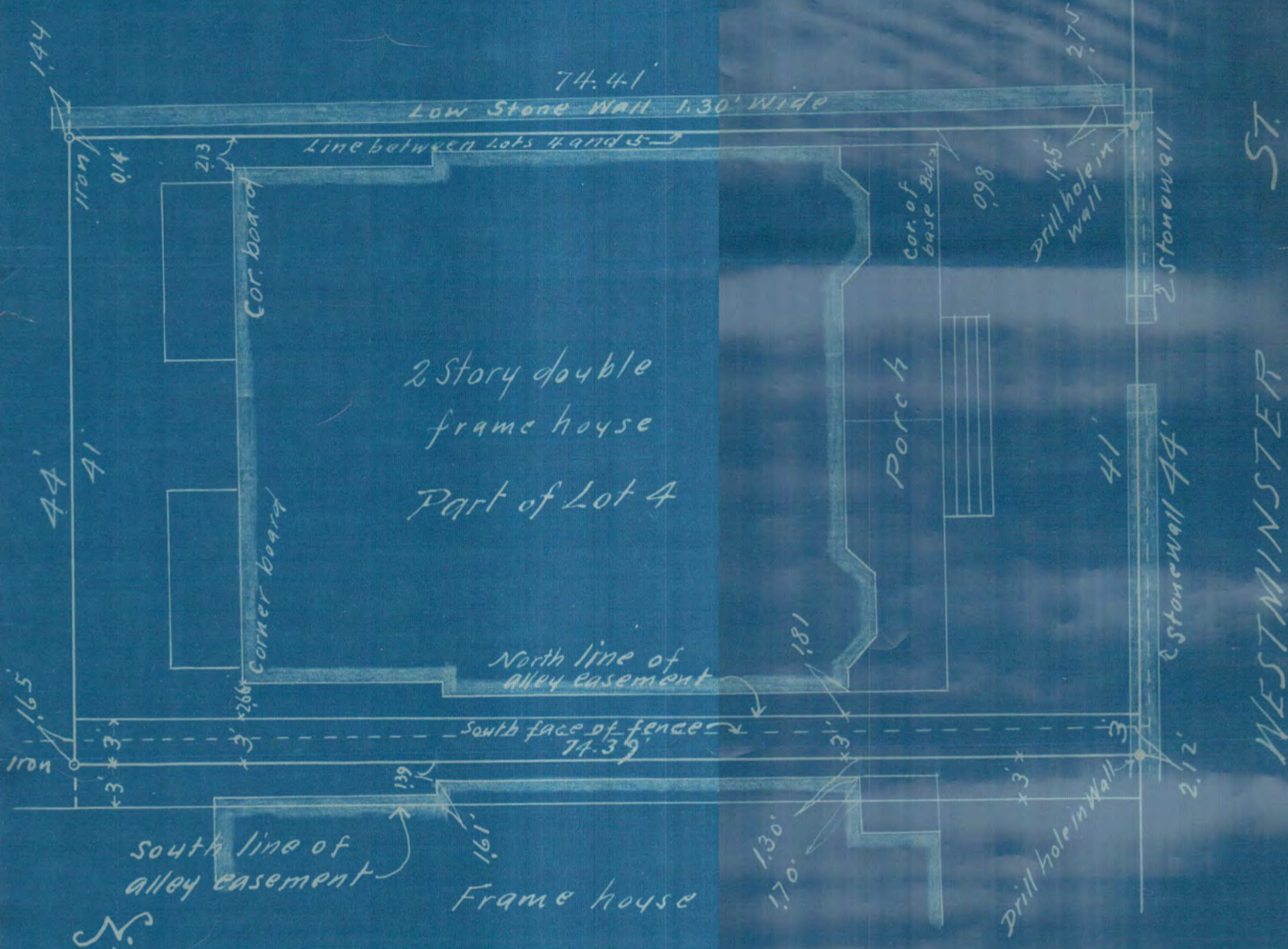


1784

Lot 5



I certify this diagram correctly represents the north 44 feet of the east 1/2 of Lot 4, block 1, Warren and Winslows Addition to St. Paul, as surveyed by me Nov. 28, 1914.

St. Paul, Minn
Nov. 30, 1914

J. Milton Fowble,
Civil Engineer & Surveyor,
ST. PAUL, MINN.

Scale, 10 Ft. Per Inch.

SURVEYED FOR STRICKLAND AND DOOLITTLE