

AUDITOR'S SUBDIVISION

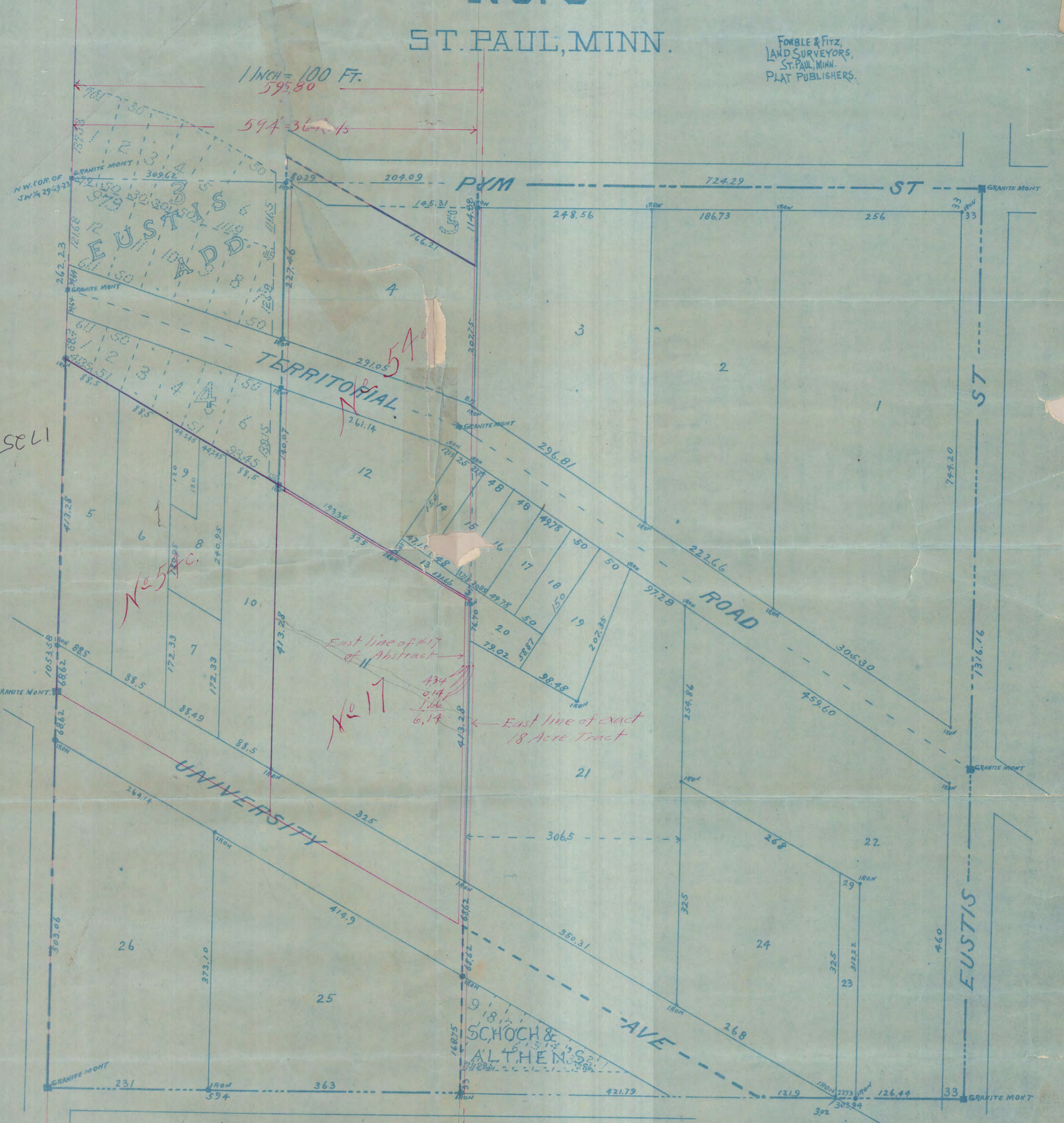
NO. 9

ST. PAUL, MINN.

FONBLE & FITZ,
LAND SURVEYORS,
ST. PAUL, MINN.
PLAT PUBLISHERS.

1 INCH = 100 FT.
595.80

594' = 36 Rods



SELL

No 5 AC.

East line of #17 of Abstract

No 11

4.34
0.14
1.06
6.14

East line of exact 18 Acre Tract

594' = 36 Rods

DESCRIPTION: The N.W. 1/4 of the S.W. 1/4 of Sec. 29, T. 29, R. 23, Excepting "Eustis Add. to St. Anthony Park," and Schoch and Althens' Add. to St. Paul.

595.80'

1725