

1721

ABSTRACT OF TITLE

MADE BY OFFICIAL OFFICE OF RAMSEY COUNTY

No. 1

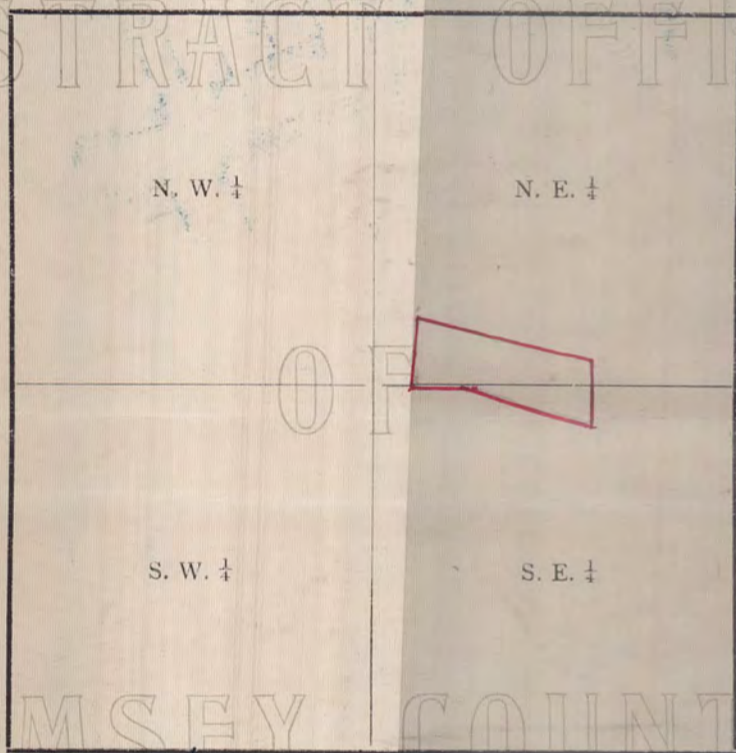
TO

Lot 1, and Lot 2, excepting the North 134 feet thereof, and Lot 3
excepting the North 135 feet thereof, all in Block 34, Linse and
Zimmerman's Rearrangement of Blocks 33 and 34, Brown and Jackson's
Addition to West St. Paul,

Premises described in caption are located in the West 1/2 of NE 1/4

of Section Number 8 Township Number 28 North of
Range Number 22 West of the Fourth Principal Meridian.

SECTION

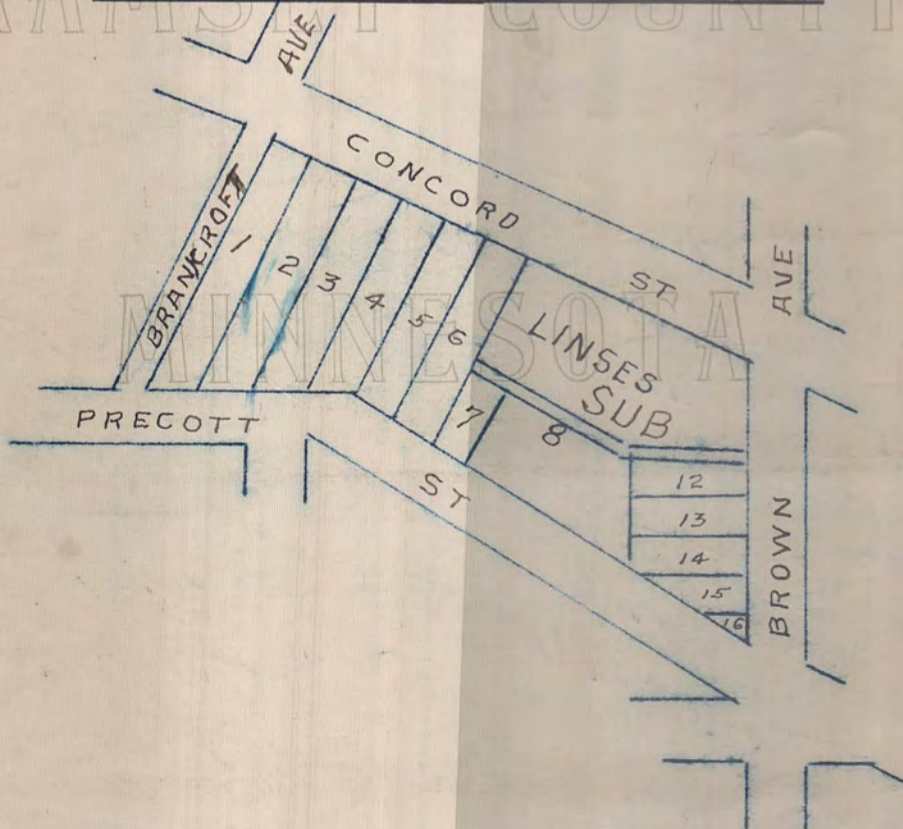


No. 2

Old Time Surveyors Measure

- $7\frac{92}{100}$ inches make 1 Link.
- 100 Links, or 66 feet, 1 Chain.
- 3 feet, 1 Yard.
- $5\frac{1}{2}$ yds. or $16\frac{1}{2}$ ft., 1 Rod or Pole.
- 4 Rods, 1 Chain.
- 80 Chains (5280 feet) 1 Mile.

No. 3



#1721

LINSE AND ZIMMERMAN'S RE.
SURVEY OF
LOTS 2 AND 3 BL. 34
EXCEPT NLY 135 FT LOTS 2 AND 3

JULY 21-1914.

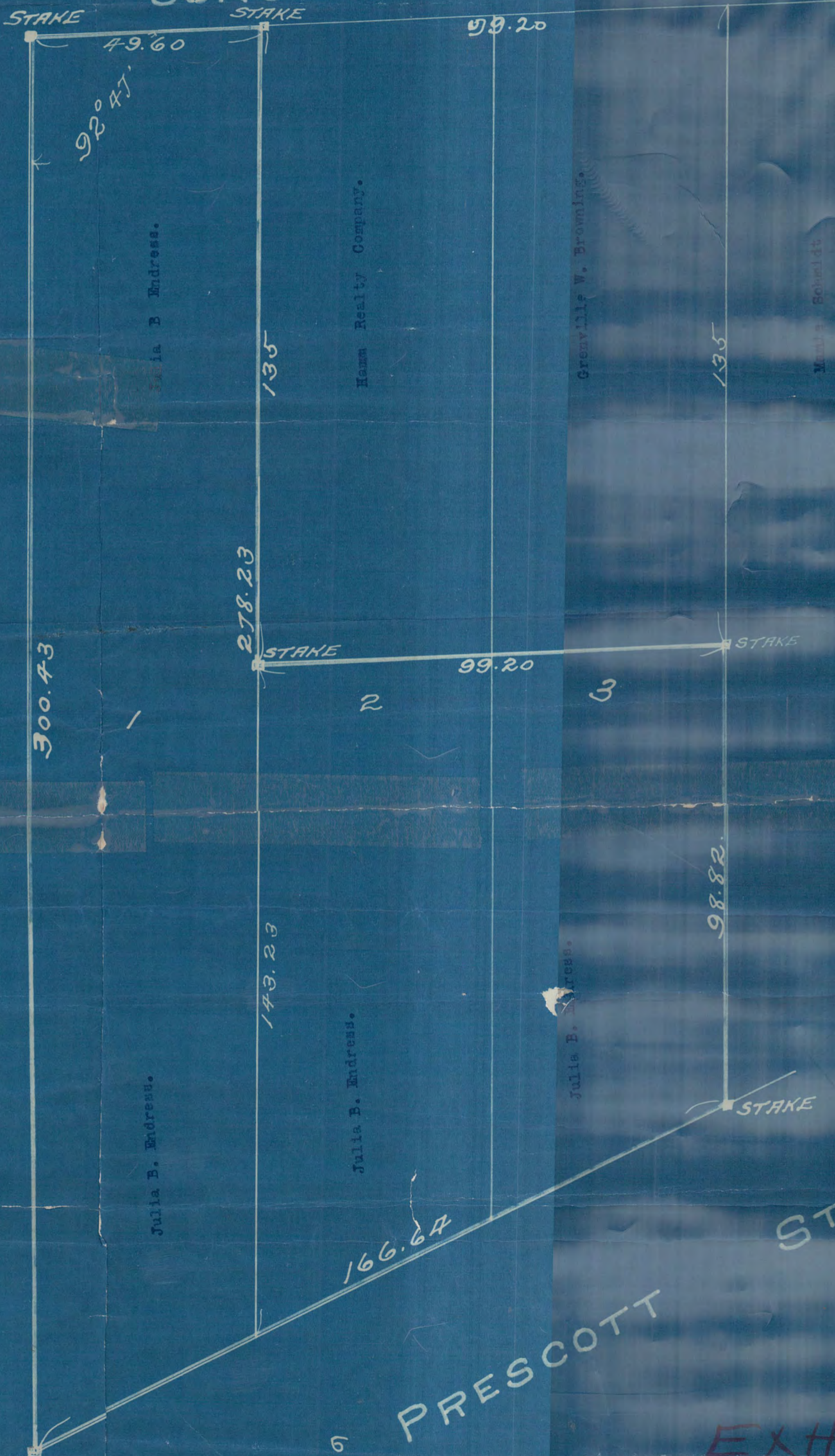
JENS PEDERSEN
SURV

CONCORD ST.

BANCROFT ST.

BANCROFT ST.

60. PRESSCOTT ST.



1721

EXHIBIT "A"