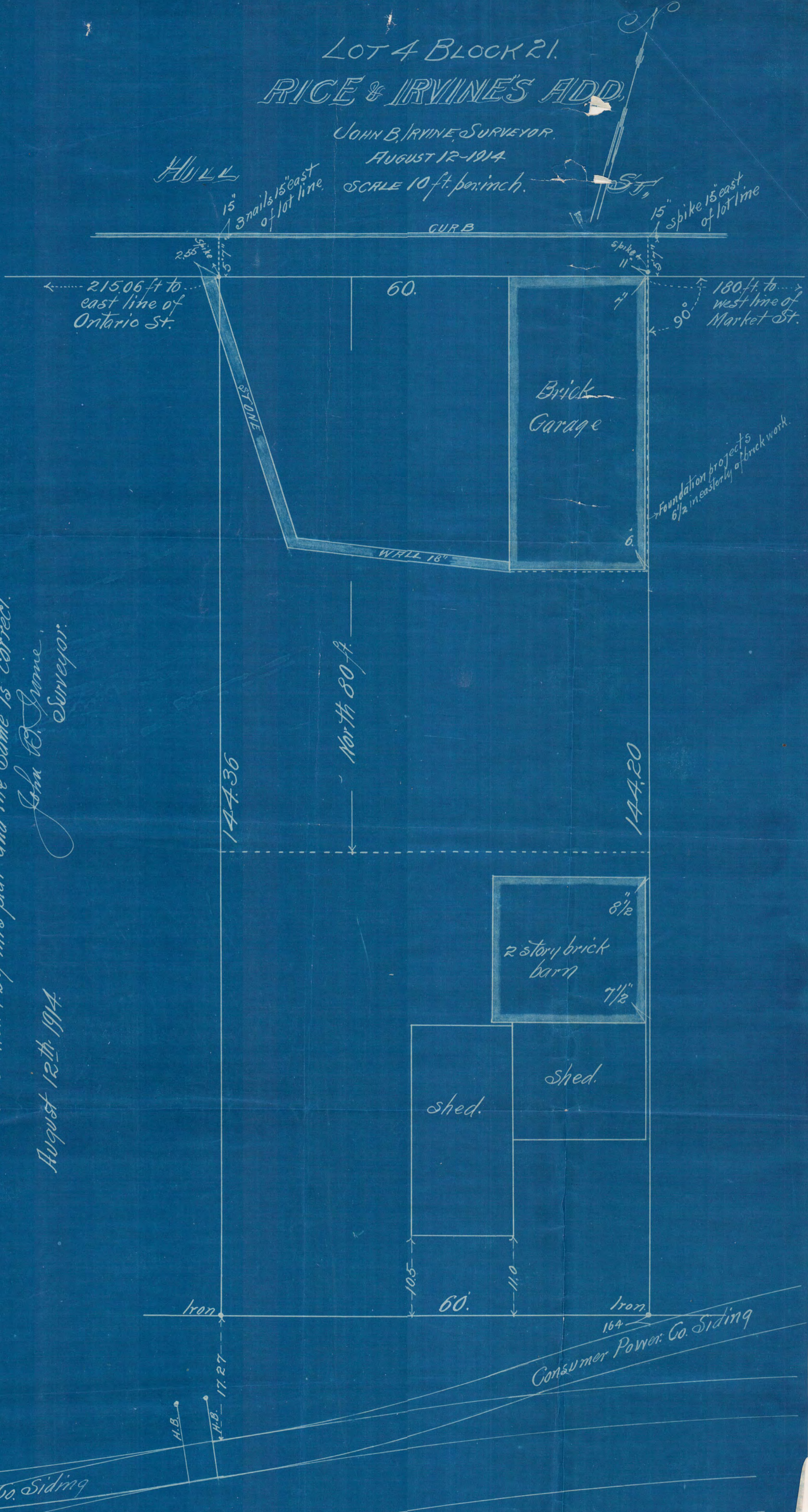


LOT 4 BLOCK 21.  
RICE & IRVINE'S ADD.

JOHN B. IRVINE, SURVEYOR.

AUGUST 12-1914

SCALE 10 ft. per inch.



I hereby certify to having surveyed Lot 4 Block 21  
Rice & Irvine's Add. and located the buildings & walls  
thereon as shown by this plat and the same is correct.

John B. Irvine  
Surveyor.

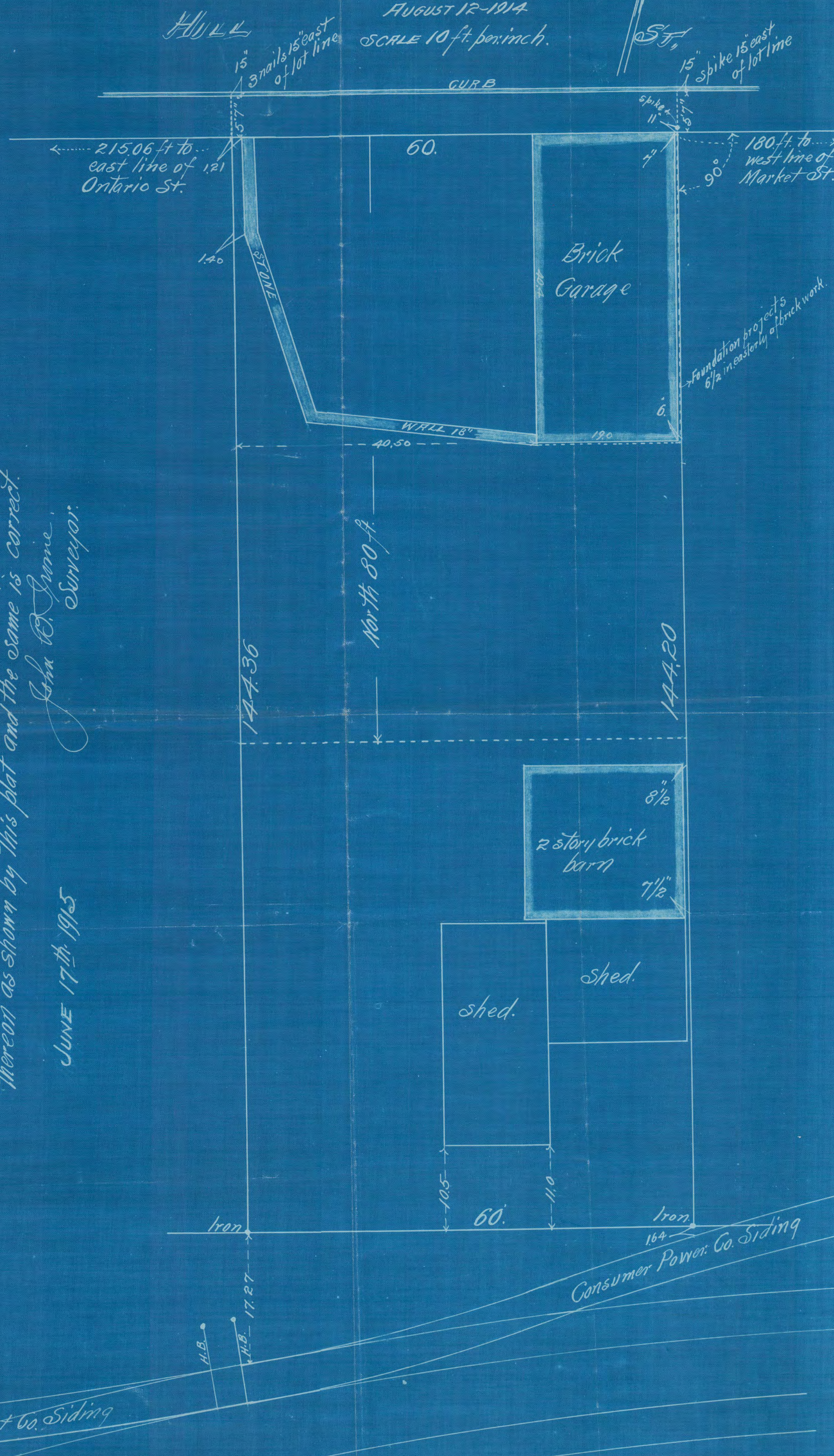
August 12th 1914.

St Paul Gas Light Co. Siding

Consumer Power Co. Siding

LOT 4 BLOCK 21.  
RICE & IRVINE'S ADD.

JOHN B. IRVINE, SURVEYOR.  
AUGUST 12-1914  
SCALE 10 ft. per inch.



I hereby certify to having surveyed Lot 4 Block 21  
Rice & Irvine's Add. and located the buildings & walls  
thereon as shown by this plat and the same is correct.

John B. Irvine,  
Surveyor.

JUNE 17th 1915