

1695

# ABSTRACT OF TITLE

MADE BY OFFICIAL OFFICE OF RAMSEY COUNTY  
TO \_\_\_\_\_

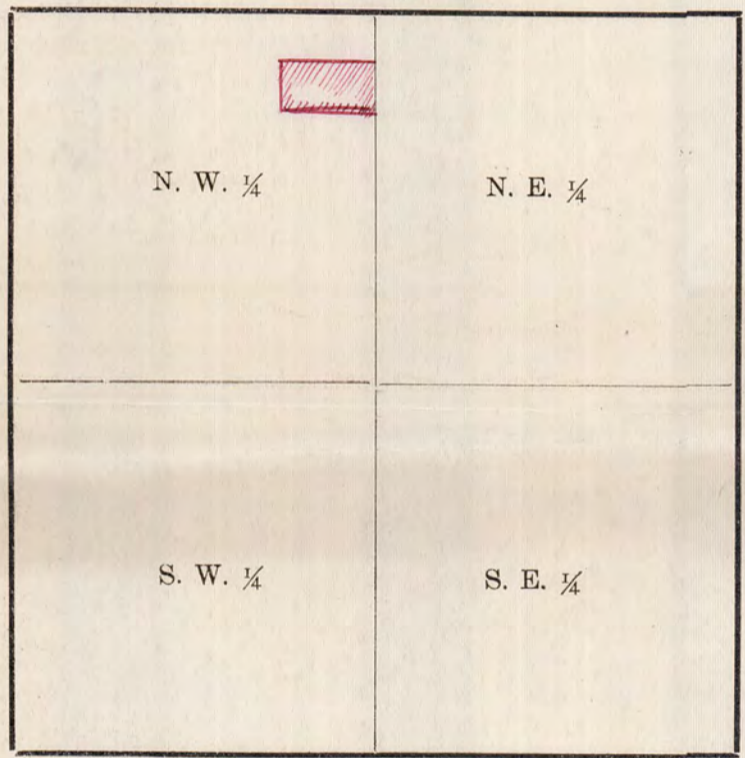
No. 1

Lots 4 and 5, Block 2, Kern's Addition to St. Paul.

Premises described in caption are located in the NE 1/4 of NW 1/4

of Section Number 1 Township Number 28 North of  
Range Number 23 West of the Fourth Principal Meridian.

### SECTION

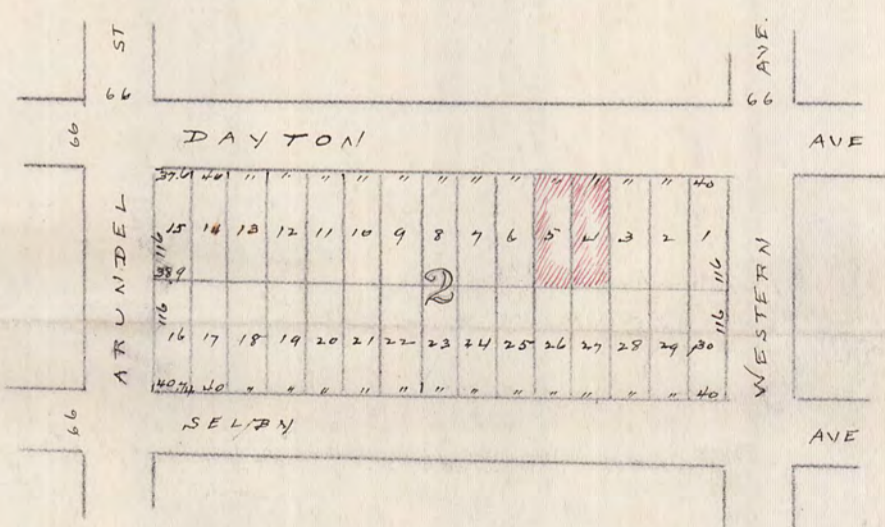


No. 2

Old Time Surveyors Measure

- $7 \frac{92}{100}$  inches make 1 Link.
- 100 Links, or 66 feet, 1 Chain.
- 3 feet, 1 Yard.
- $5 \frac{1}{2}$  yds. or  $16 \frac{1}{2}$  ft., 1 Rod or Pole.
- 4 Rods, 1 Chain,
- 80 Chains (5280 feet) 1 Mile.

No. 3



# 1695

# KERN'S ADD

1695

SURVEY OF

LOT 4

BL 2

JULY 10-1914

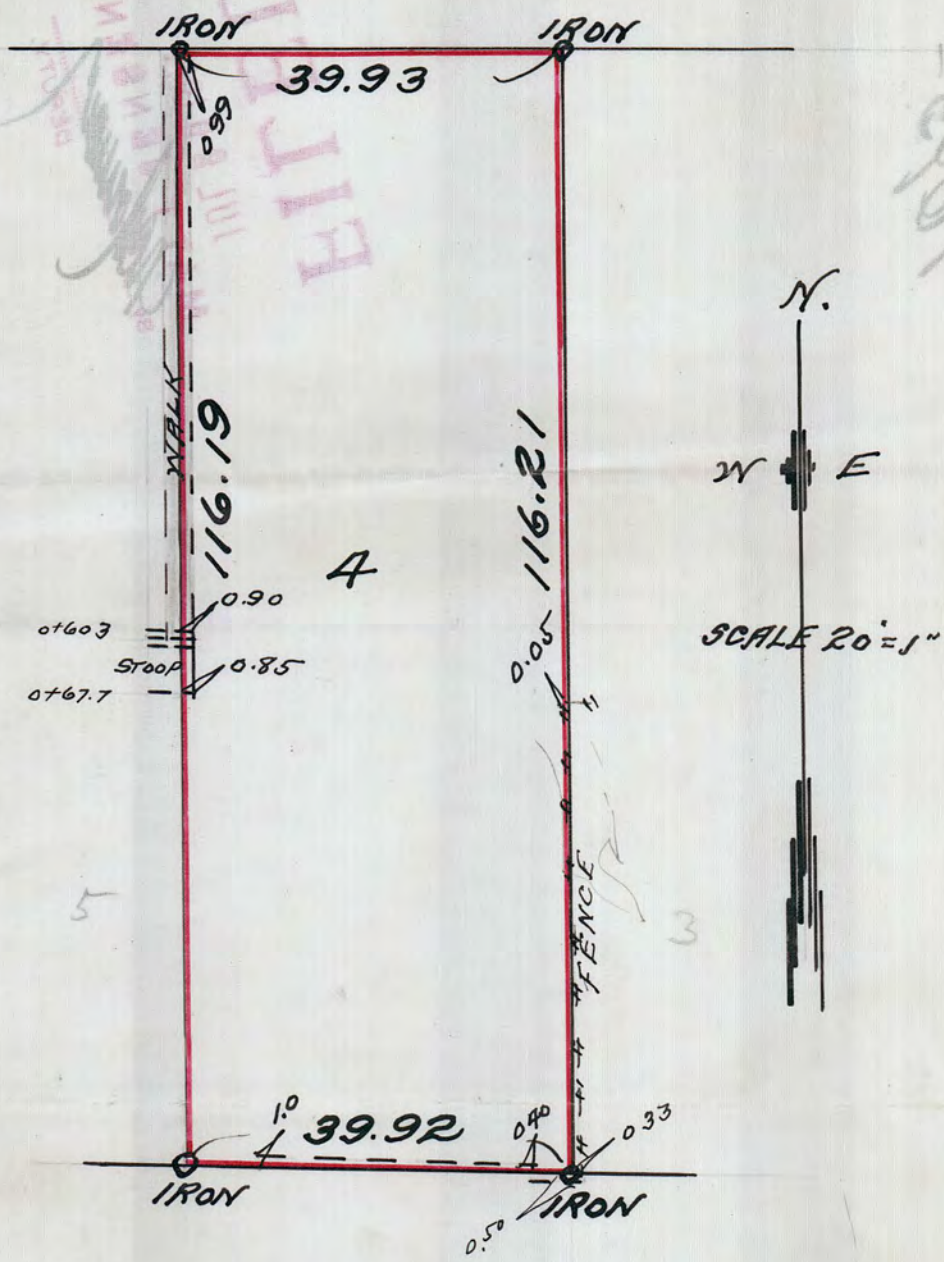
JENS PEDERSEN  
SURY.

I HEREBY CERTIFY TO  
HAVING SURVEYED LOT 4, BL 2, KERN'S  
ADD AND HAVE PLACED IRON MONTS  
AT THE CORNERS AND ALL LOCATIONS  
ENCROACHMENTS AND DISTANCES  
SHOWN ON THIS MAP IS CORRECT

Jens Pedersen  
SURY

DAYTON AVE.

66



at 60.3  
at 67.7

5

3

Henry Markes  
315 N. 4th St

# 1695