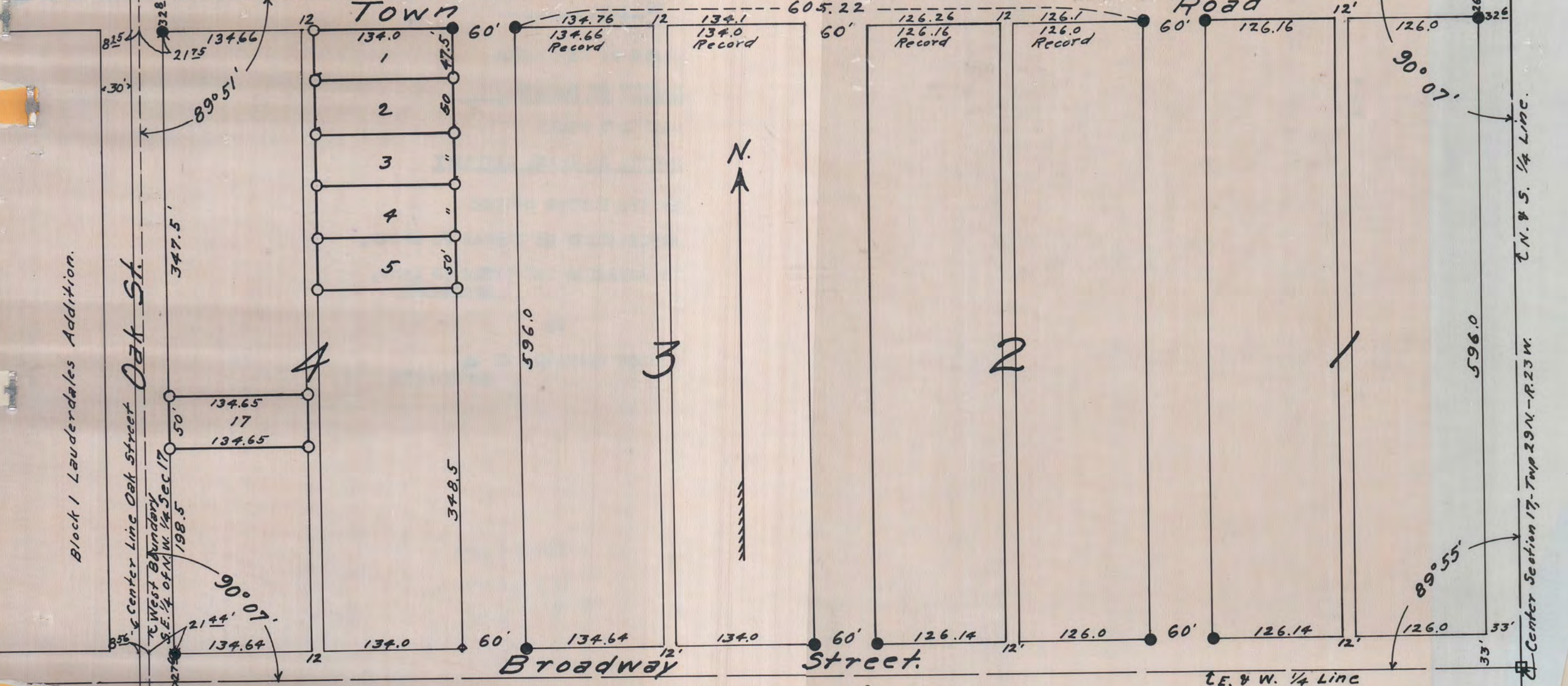


North Boundary of the S 1/2 of the S.E. 1/4 of the N.W. 1/4 of Sec. 17, - Twp 29 N. - R. 23 W.



Key to Symbols
 □ Granite Monument
 ● Original Cast Iron Monument Found by H.B. Roe
 ○ " Corner Stake (Nailed out) " " " "
 ○ Gas Pipe " " (Set by Surveyor Signatory hereto)

GARCELON'S ADDITION TO ST. PAUL,

Showing Lots 1 to 5 incl and Lot 17 Block 4 as surveyed Nov. 4th & 5th, 1913, by H.B. Roe Civil Engineer & Surveyor.
 Scale 1" = 100'

Block 1 Lauderdale's Addition.

Center Line Oak Street

Center Line of West Boundary S.E. 1/4 of N.W. 1/4 Sec 17

Center Section 17, - Twp 29 N. - R. 23 W.