

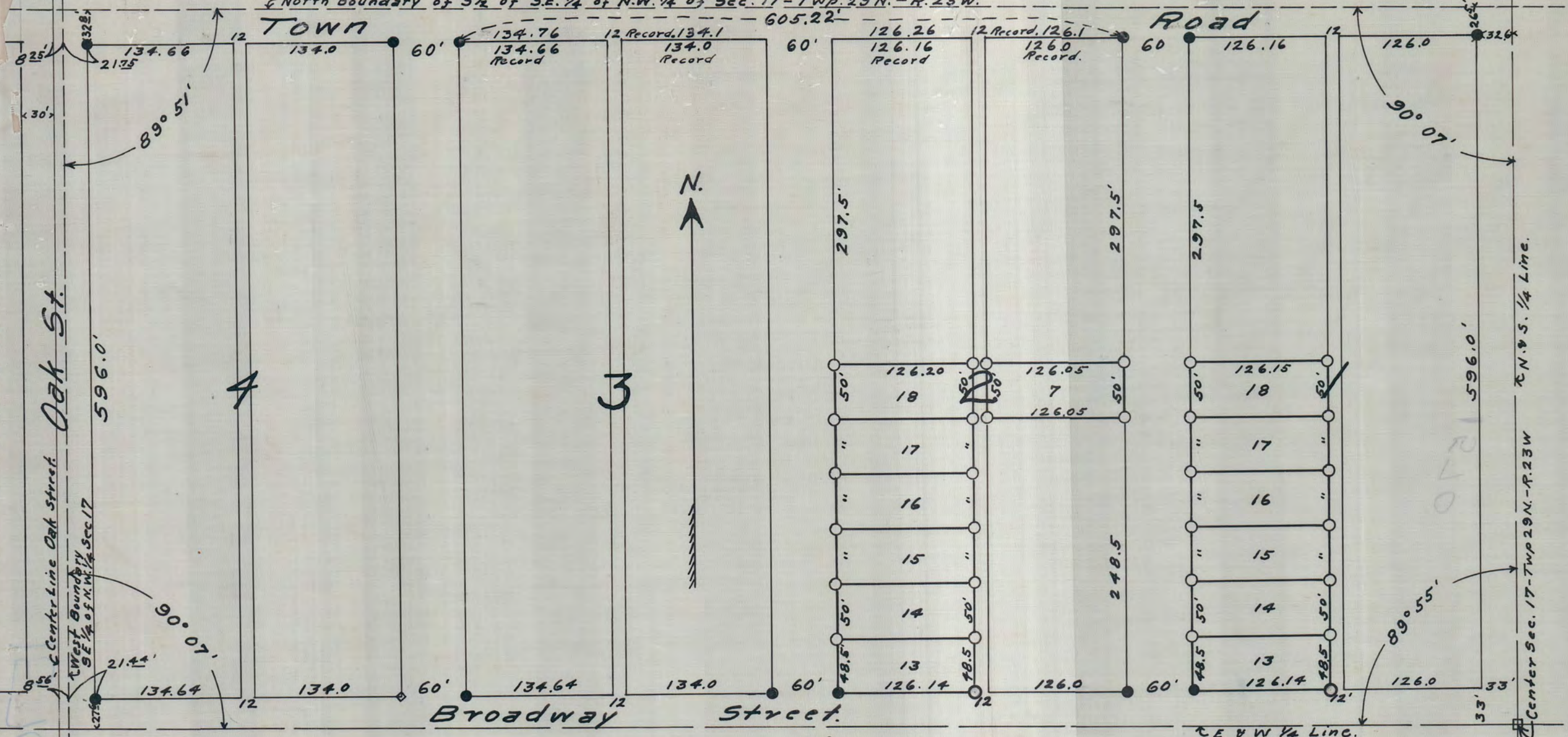
Block 1 Lauderdale's Addition.

Oak St.

TOWN

Road

North Boundary of 3/4 of S.E. 1/4 of N.W. 1/4 of Sec. 17 - Twp. 29 N. - R. 23 W.



GARCELON'S ADDITION TO ST. PAUL

Showing Lots 13 to 18 incl., Block 1
and Lot 7 & Lots 13 to 18 incl. Block 2
as surveyed Oct 31st to Nov. 4th, 1913
by *H. B. Roe* Civil Engineer & Surveyor

Scale 1" = 100'

Key to Symbols

- Granite Monument
- Original Cast Iron Monument Found by H. B. Roe
- " Corner Stake (Rotted out) " " " "
- Gas Pipe " " (Set by Surveyor Signatory hereto)

#1570