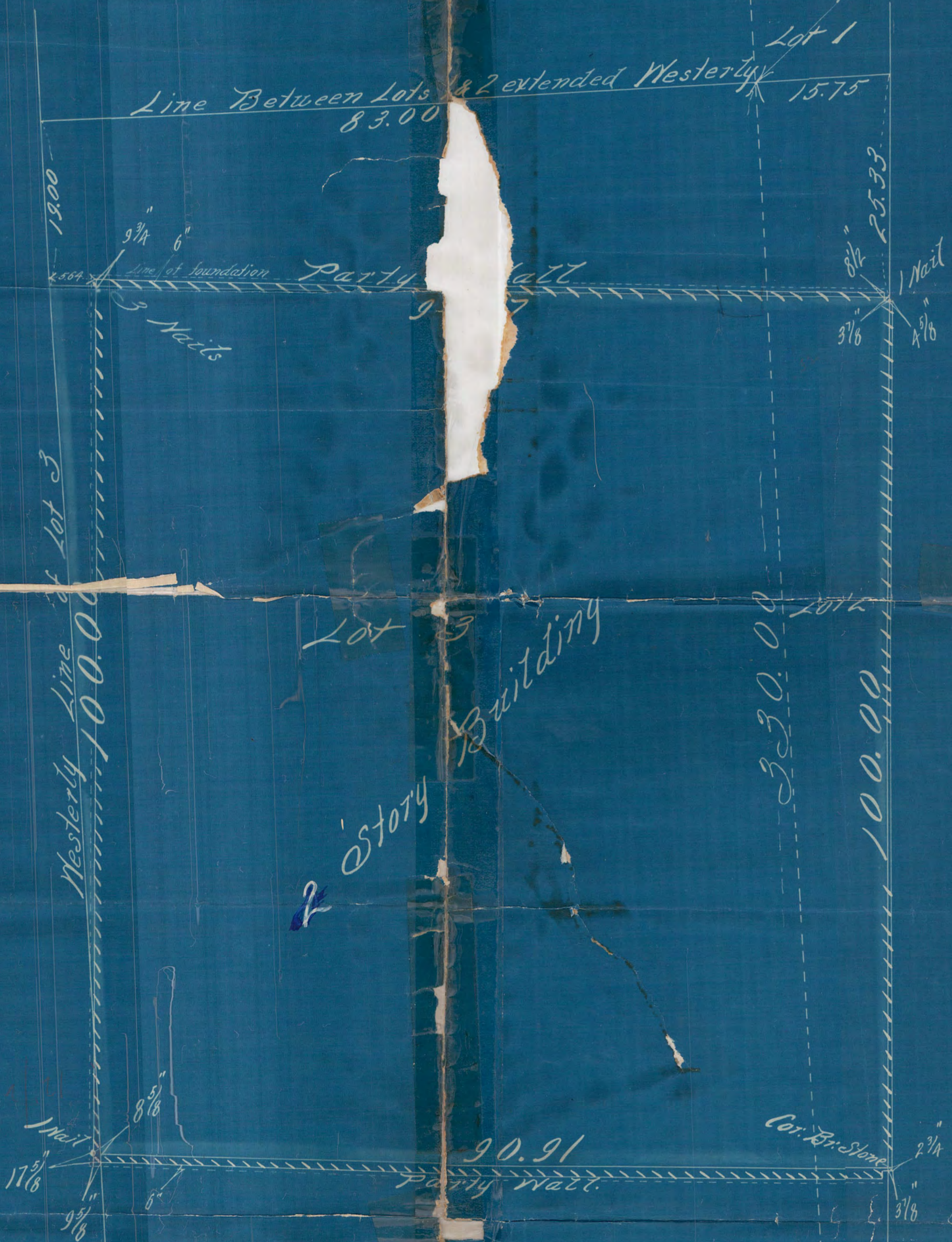


PART OF LOTS 2 & 3 BLOCK 12  
 ROBERTS AND RANDALLS ADD.

Scale 10 Feet pr. inch

N.W. Cor. of Lot 2  
 According to Dist. Court  
 File # 4309.



MINNESOTA ST.

St. Paul Minn. Oct. 30<sup>th</sup> 1903  
 I hereby certify that this diagram  
 correctly represents "PART OF LOTS 2 & 3  
 BLOCK 12, ROBERTS AND RANDALLS  
 ADD." as surveyed by me Oct. 29<sup>th</sup> & 30<sup>th</sup> 1903.

John B. Irvine  
 County Surveyor  
 Room 16 Court House  
 ST

NINTH

097 Dist. G. File # 4309.

S. E. Cor. Louis Robert acre