

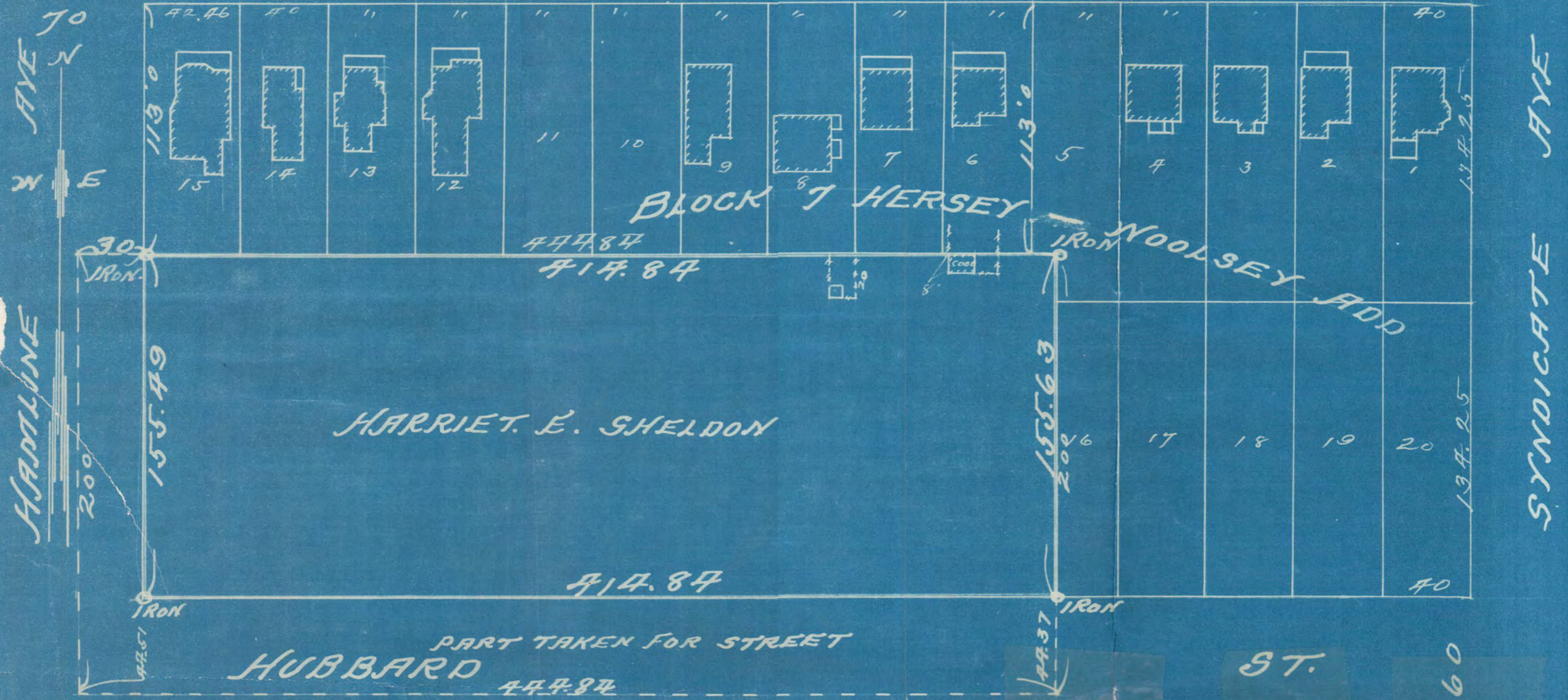
I HEREBY CERTIFY TO HAVING SURVEYED BLOCK 7 HERSEY AND WOOLSEY'S ADD ALSO THAT PART OF S.W. 1/4 OF S.E. 1/4 SEC 27 T29 R23 DESCRIBED AS FOLLOWS TO WIT COMMENCING AT THE S.W. COR. BL 7 HERSEY - WOOLSEY'S ADD SAID POINT BEING ON THE E LINE OF HAMLINE AVE AND 113 FTS FROM THE N.W. COR OF SAID BLOCK 7 THENCE E ALONG THE S LINE OF PART OF SAID BL 7 414 84 FT THENCE S ON A LINE PARALLEL WITH THE E LINE OF HAMLINE AVE 200 FT THENCE WLY PARALLEL TO SAID S LINE OF SAID BLOCK 7 414 84 FT TO E LINE HAMLINE AVE THENCE N ALONG THE E LINE OF HAMLINE AVE TO PLACE OF BEGINNING EXCEPT PART TAKEN FOR HUBBARD ST AND HAVE PLACED IRON NAIL AT THE CORNERS AS SHOWN ON THIS MAP AND THE SAME IS CORRECT

MAP OF  
 BLOCK HERSEY AND WOOLSEY ADD  
 AND  
 HARRIET E. SHELDON'S LAND

SCALE 50' = 1" JENS PEDERSEN SURV. 210 GLOBE BLDG

Jens Pedersen SURV.

HEWITT AVE



1535

# HERSEY-WOOLSEY ADD. TO ST. PAUL, MINN.

SCALE 100 FT TO THE INCH.

Surveyed by Galv. A. Johnson, 1882.

