

LOTS 20 & 21. BLOCK 3.

IRVINE'S ADD.

JOHN B. IRVINE, SURVEYOR.

408 GLOBE BLD'G.

ST. PAUL, MINN.

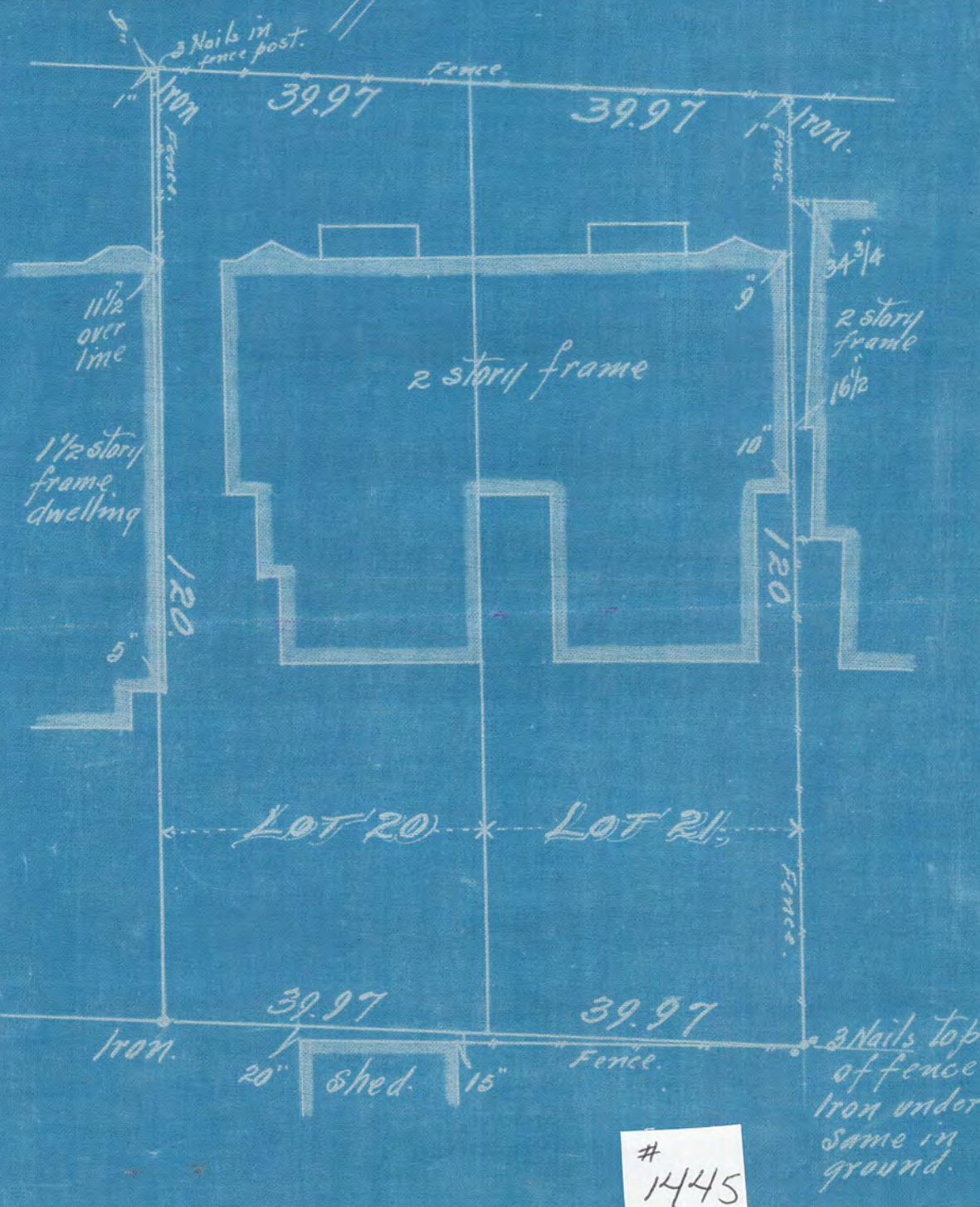
DEC. 21-1912.

SCALE 20ft. per. inch.

I hereby certify to having surveyed lots 20 & 21. block 3. Irvine's Addition and located the buildings thereon as shown by this plat and the same is correct.

John B. Irvine,
Surveyor.

GLENHART AVE.



1445