

DESCRIPTION.

1434

Beginning at the intersection of the S'y line of E. 10th St. & W'y line of Rosabel St.; thence W'y on the S'y line of E. 10th St. 45 ft. to a point; thence S'y parallel with the W'y line of Rosabel St. 116 ft. to a point; thence E'y. parallel with S'y line of E. 10th St. 45 ft. to the W'y line of Rosabel St.; thence N'y along W'y line of Rosabel St. 116 ft. to point of beginning. Being the E'y 45 ft. of Lot 1. except the south 40 ft. thereof. of Block 10. Hoyt's Add. and so much of Block 8. of said Addition as lies south of the S'y line of E. 10th St. and north of the said E'y 45 ft. of said lot 1.

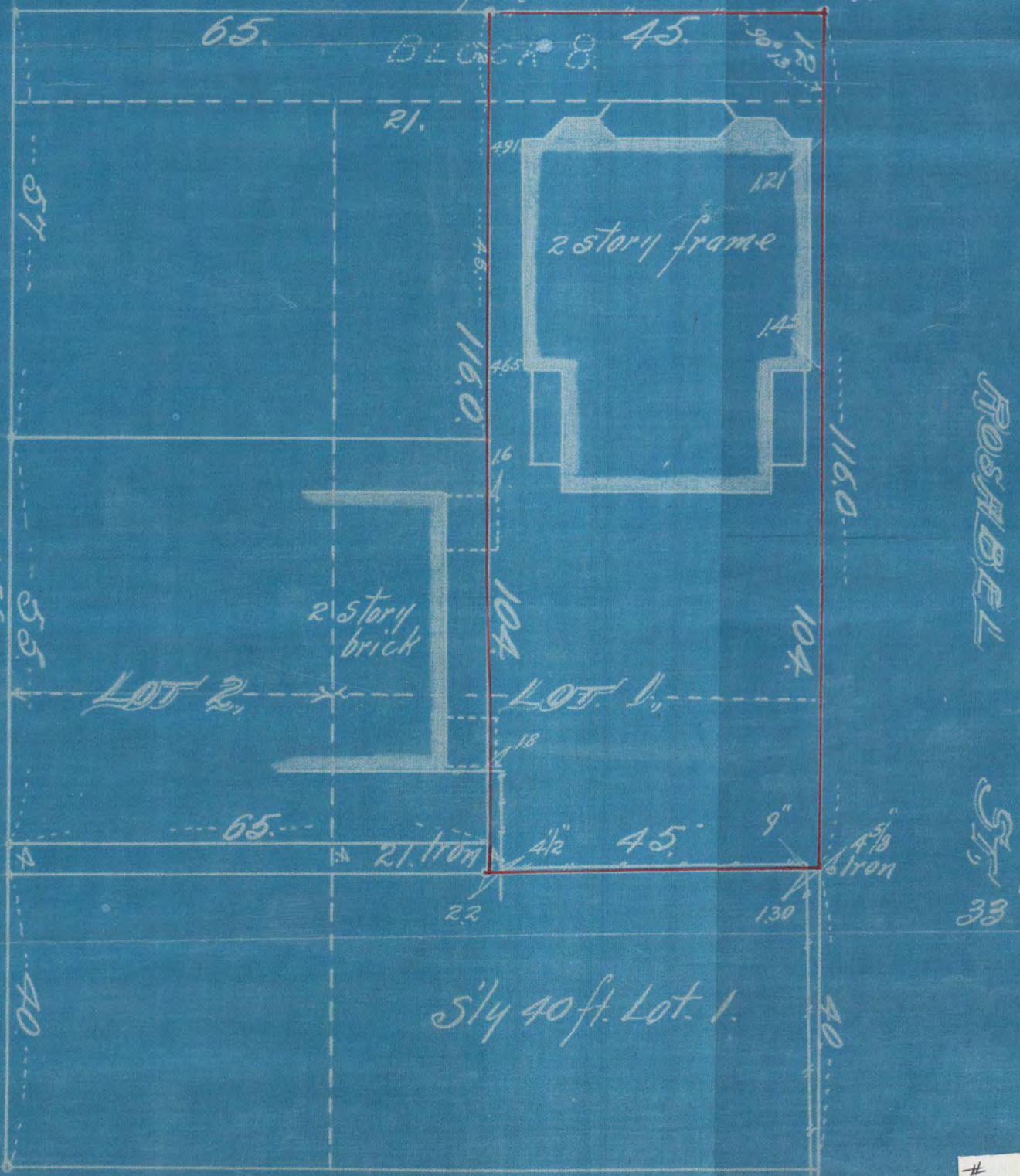
JOHN B. IRVINE SURVEYOR
408 GLOBE BLD'G
ST. PAUL, MINN.
OCT. 30-1912.

scale
20 ft. per inch.

E 10th ST.

spike

Iron.



1434

Brick Barn